

Meewasin *Experiences* 2026

Meewasin is more than a trail - explore a variety of unique tourism experiences guided by local experts which showcase the beautiful Meewasin Valley in Saskatoon & area.

PAID

01. Guided Walking Tours of Downtown Saskatoon



Dates: Wednesday & Saturdays, May - Oct
Time: Wed 5:30 PM - 7:00 PM, Sat 10:00 AM - 11:30 AM
Location: In front of the lobby of the Remai Art Gallery // 1.5 km **Easy - Moderate Walk**
May – September Explore the past, present, and future of the Meewasin Valley. This fascinating walking tour uncovers the story of the river trails of downtown Saskatoon.
[Capacity min 2, max 30]
Public Tour Rate: \$25 per person | Student Rate: \$15 per student
Private Tour Rate: flat fee \$345 | Private Student Rate: flat fee \$200
1/2 Day Step-on Coach Guide Rate: flat fee \$375 | Full Day Rate: flat fee \$545
Learn more: meewasin.com/walkingtours

02. Guided Beaver Walking Tours in Downtown Saskatoon (NEW!)



Dates: Mondays, June - August
Time: 7:00 PM - 8:30 PM
Location: West Saskatoon Weir Parking Lot // 1.5 km Easy to Moderate Hike
May – August Explore the urban riverbank with us and learn how the Beavers shape our local environment in surprising ways. **[Capacity min 2, max 30]**
Public Tour Rate: \$25 per person | Student Rate: \$15 per student
Private Tour Rate: flat fee \$345 | Private Student Rate: flat fee \$200
Learn more: meewasin.com/walkingtours

03. Guided Tours of Beaver Creek Conservation Area (NEW!)



Dates: Saturdays, July - August
Time: 10:00 AM - 11:30 AM
Location: Beaver Creek Conservation Area // 1.5 km Easy to Moderate Hike
July – August Step into the beautiful valley of Beaver Creek Conservation Area, an oasis within the Meewasin Valley. This introductory guided hike explores the natural wonders of Beaver Creek, suitable for all ages. **[Capacity min 2, max 16]**
Public Tour Rate: \$25 per person | Student Rate: \$15 per student
Private Tour Rate: flat fee \$345 | Private Student Rate: flat fee \$200
Learn more: meewasin.com/walkingtours

Trade pricing available - All tours and experiences include a donation to Meewasin's Conservation and Education efforts in the Meewasin Valley of Saskatoon - **Custom add-ons available** - **All pricing in CAD** - **GST (5%) & PST (6%) NOT INCLUDED** - Events and pricing may be subject to change - For more information about Meewasin experiences go to: meewasin.com/experiences or contact: events@meewasin.com

Meewasin Signature Experience



04. The Grazing Dinner (19+)



Dates: Thu Sep 3, Fri Sep 4, Sat Sep 5, Thu Sep 10, Fri Sep 11, & Sat Sep 12

Time: (5:00 PM - 9:00 PM)

Location: Beaver Creek Conservation Area (map) // 1.5km moderate off-trail grassland hike

May & Sept An all-inclusive, one-of-a-kind experience. Walk through the prairie with our sheep and dogs, and indulge in a locally inspired meal prepared fresh on-site by Odlá's fine dining head chef. Enjoy a sheep and stock dog demonstration with our shepherd over dessert. **[Capacity min 8, max 34]**

Per Person Rate \$299 | Private groups \$575 Flat Fee to secure a different date + Per Person Rate

Learn more: meewasin.com/grazingdinner

The Globe And Mail - HIDDEN CANADA Travel Guide, 2025 - #1 Things to See & Do - Meewasin Valley GRAZING DINNERS

05. Birding Breakfast



Dates: Sun May 10, Mother's Day, Sat June 6, Sun June 7, Sat June 13, Sun June 14

Times: (7:00 AM-9:30 AM) or (10:00 AM-12:30 PM)

Location: Beaver Creek Conservation Area (map) // 1 km easy to moderate hike

May & June Join Meewasin in an early morning guided tour complete with hot coffee and breakfast goodies during the start of spring migration. This is a unique opportunity for introductory birders to see migratory species as they first arrive at the Creek with our resident birder and director of education, Jamie McMillan. **[Capacity min 6, max 18]**

Per Person Rate \$85 | Private tours flat fee **\$375** to secure a different date

Learn more: meewasin.com/birdingbreakfast

06. Naughty by Nature (19+) Meewasin's R-Rated Field Trip



Public dates: Thurs July 9, Thurs July 23, Thurs Aug 6, Thurs Aug 20

Time: 6:00 PM - 9:00 PM

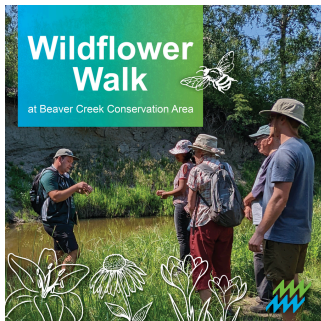
Location: Beaver Creek Conservation Area (map) OR have US come to YOU

#MeewasinOnTheGo! // 1 km moderate hike

July – August This evening tour explores the diverse mating habits and survival strategies of the wildlife in the Valley. Laugh out loud while uncovering the science of reproduction in nature. This tour comes with a cocktail-making experience, a nature hike, games, food add-ons, and more! **[Capacity min 12, max 28]**

Per Person Rate \$40 | Private tours flat fee **\$375** to secure a different date. **Learn more:** meewasin.com/naughtybynature

07. Wildflower Walks at Beaver Creek



Dates: Sat July 25, Thu July 30

Times: (10:00 AM - 12:30 PM) or (2:00 PM - 4:30 PM)

Location: Beaver Creek Conservation Area (map) // 1 km moderate hike

July – August Discover native wildflowers and the animals that pollinate them. Guests finish the tour by planting a native flower and enjoying a handmade beverage. **[Capacity min 6, max 16]**

Per Person Rate \$32 | Private tours flat fee **\$375** to secure a different date

Learn more: meewasin.com/wildflowerwalk

08. Dark Skies



Regular Dates & Times: Jun 19, Jul 9, Jul 23, Aug 6 & Aug 20 (9:30 PM–12:00 AM)

Special Dates: Aug 12, (10:00 PM–12:00 AM), Oct 30 (8:00 PM–12:00 AM), Nov 18, (9:00 PM–12:00 AM), Dec 14, (9:00 PM–11:30 PM)

Location: Beaver Creek Conservation Area (map) // 1 km optional hike, moderate

All Seasons Join dark sky enthusiasts, local astronomers and Meewasin guides to learn and celebrate our dark Saskatchewan skies. **[Capacity min 10, max 60]**

Per Person Rate \$32 | Private tours flat fee **\$675** to secure a different date

Learn more: meewasin.com/darkskies

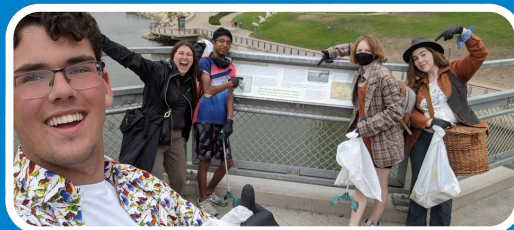
Every booking supports the conservation and education efforts that keep this natural urban sanctuary vibrant for generations to come!

Meewasin Experiences *Matter*

GreenStep Certified

Meewasin is proud to be the **first organization in Saskatchewan** to achieve **GreenStep Sustainable Tourism Certification**. This certification process involves a third-party review of eighty-seven criteria across four key pillars: **management, social and economic, natural and cultural, and environmental**. This internationally recognized designation ensures that Meewasin's tourism experiences meet high global standards for sustainability. These efforts focus on protecting the valley's sensitive ecosystems and supporting the local community.

GreenStep Sustainable Tourism
Silver Certified
BUSINESS 2024-2026



09. ECO-ADVENTURE Camps ages 8-11 years old



Dates: Wed Jul 8 - Fri Jul 10, Wed Jul 22 - Fri Jul 24, Wed Aug 12 - Fri Aug 14

Time: 9:30 AM - 3:30 PM

Location: Beaver Creek Conservation Area (map)

July – August Immerse your child in an unforgettable outdoor experience, where they'll embark on guided adventures, unraveling the mysteries of Beaver Creek's unique habitats and rich ecosystems. **[Capacity min 6, max 12]**

Per Person Rate \$150 per person

Learn more: meewasin.com/ecoadventure

WINTER

10. Meewasin's Sip & Skate (19+)



Dates: Every other Saturday through January & February 2027

Time: 6:00 PM - 8:00 PM

Location: Meewasin Cameco Skating Rink @ Nutrien Plaza // skate aids available

January – February For a few select nights each season, we close the rink for this exclusive event, where guests get a chance to skate under twinkling lights (without the crowds!) while enjoying local food and hot boozy (and non-boozy!) beverages. **[Capacity min 10, max 40]**

Per Person Price \$61.95 | **Private group** flat fee **\$375** to secure a different date

Learn more: meewasin.com/sipandskate

11. Meewasin's Snowshoe Adventure



Dates: Every other Saturday through January & February 2027

Time: 1:00 PM - 3:30 PM

Location: Beaver Creek Conservation Area (map) // Snowshoes included!

January – February A fun beginner snowshoe adventure! See how local animals and plants embrace (or simply survive) winter at Beaver Creek. Enjoy hot beverages, snacks, and a guided tour. **[Capacity min 4, max 20]**

Per Person Price: \$27 | **Private group** flat fee **\$175** to secure a different date

Learn more: meewasin.com/snowshoeadventure

12. Meewasin's Silent Walks (Free or By Donation)

FREE



Dates: Select Saturdays: June 20, July 4, July 18, August 1, August 8, August 22

Time: 9:00 AM - 11:00 AM

Location: Beaver Creek Conservation Area (map) // 1.5 moderate off-trail grassland hike

June – August Connect to the beauty of nature on a silent morning walk, following the trail through the open prairie vistas and forested creek valley. This small-group, interpreter-guided walk, includes sit-spot practice, reflection time, mindfulness, and a great opportunity to unplug! **[Capacity min 3, max 8]**

Per Person Rate FREE or by donation

Learn more: meewasin.com/free-events

13. Meewasin's Grazing Demos (Free or By Donation)

FREE



Dates & Times: Sat Aug 29 @ BCCA, (10:00 AM - 11:30 AM, 2:00 PM - 3:30 PM) - Sun Aug 30 @ BCCA, (2:00 PM - 3:30 PM) - Thu Sep 17 @ NE SWALE, (5:30 PM - 7:00 PM) - Fri Sep 18, @ NE SWALE (5:30 PM - 7:00 PM) - Sat Sep 19, @ NE SWALE (11:00 AM - 12:30 PM, 2:00 PM - 3:30 PM)

Location: **BCCA:** Beaver Creek Conservation Area (map) & **NE SWALE:** the Northeast Swale (map) // demo's take place less than 300m from parking lot

May & Sept Watch shepherd Jared Epp and his stock dog in action, while discovering the crucial role of grazing in managing native prairie ecosystems and promoting healthy grasslands. **[Capacity min 8, max 150]**

Per Person Rate \$FREE or by donation

Learn more: meewasin.com/grazingdemo

14. Wellness with Meewasin (Free or By Donation)

FREE



Dates: Sunday July 12th , Sunday August 9th

Time: 9:00 AM - 10:00 AM

Location: Beaver Creek Conservation Area (map)

May-August These outdoor sessions offer a guided exercise class within the natural landscape of the creek valley. Improve your physical well-being through a structured workout followed by peaceful moments at Beaver Creek. **[Capacity min 1, max 34]**

Per Person Rate FREE or by donation

Private group flat fee **\$175** to secure a different date

Learn more: meewasin.com/free-events

Trade pricing available - All tours and experiences include a donation to Meewasin's Conservation and Education efforts in the Meewasin Valley of Saskatoon - **Custom add-ons available** - **All pricing in CAD - GST (5%) & PST (6%) NOT INCLUDED** - Events and pricing may be subject to change - For more information about Meewasin experiences go to: meewasin.com/experiences or contact: events@meewasin.com



Volunteer with Meewasin

The Friends of the Valley Program

Meewasin offers meaningful volunteer opportunities that allow visitors to directly contribute to the conservation of the Valley. These hands-on experiences help travelers and citizens alike connect with the local ecosystem while supporting the sustainability of Saskatoon's natural heritage.

Dates: See our Live Volunteer Schedule at meewasin.com/volunteerschedule

Times & Locations: All Seasons - Times and Locations Vary

See Activities & Seasonality: meewasin.com/volunteeractivities

Per Person Price: \$FREE or by donation

Private Volunteer Programs flat fee starting at \$375 for up to 2h | \$550 for 3h or more.

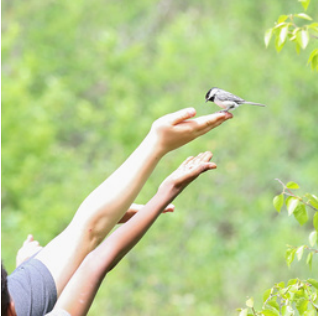
Learn more: meewasin.com/volunteer

Contact: volunteer@meewasin.com



Meewasin

Grade 3 & 5 School Programs



Any group can book a paid education or school program!

However, Meewasin offers a limited number of subsidized programs to classroom teachers, which are paid-for by the school divisions; Saskatoon Public School Division (SPSD) and Greater Saskatoon Catholic Schools (GSCS).

Grade 3 Ecology - Northeast Swale (\$200)

-Half Day Program-

9:30 am - 11:30 am

or

12:30 pm - 2:30 pm

Fall: September & October

Spring: May & June



Grade 5 Ecology - Beaver Creek Conservation Area (\$325)

-Full Day Program-

10:00 am - 2:30 pm

Fall: September - November

Spring: April - June

Grade 5 Cross-Country Ski Program - Beaver Creek Conservation Area (\$375)

-Full Day Program-

10:00 am - 2:30 pm

Winter: January - February



Subsidized Program Eligibility:

While paid programs are open to any group, **ONLY grade 3 or 5 classroom teachers** (including split grade classes), **teaching the respective grade of the desired program, within SPSP or GSCS are eligible** for a subsidized program.

Note: The cost of transportation is NOT included.

For division financial support and bus bookings please contact:

Saskatoon Public Schools SSSAD, Athletics and Out of School Education P: 306-683-8273

Greater Saskatoon Catholic Schools Coordinator of Learning Services P: 306-659-7075

Yellow Fish Road™ & Sanitary Sewer Program



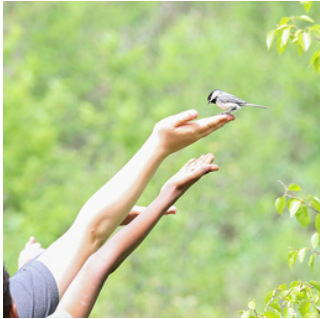
In-classroom Presentation (Ages 10-13)

Cost: Free*

Location: In-classroom (Meewasin staff will visit you!)

*This program is supported by the City of Saskatoon. Booking information for these programs will be distributed through the school divisions directly.

General Education Programs



Meewasin's Education Team offers a diversity of seasonal land-based programming at various locations in Saskatoon and surrounding area. Nature education programs can be tailored to tie-in with curriculum outcomes and/or cover specific topics of interest. Education Programs are available to a range of audiences including:

K-12 classes & homeschool groups
Post-secondary students
Newcomer groups
Organizations & Clubs



Group Cost: \$100 per hour for one Educator (+ \$75 flat rate per additional Educator)*.

*Group size and program location will determine the number of recommended Educators

Dates & Time: Contact us with your preferred location, date(s) and time(s) for availability

Location: Programs are offered at Beaver Creek Conservation Area (map) // OR Northeast Swale (map) // OR in-class // **OR at a location/park of your choosing?** // 1km moderate to easy on-trail hike

Private Meewasin Experiences

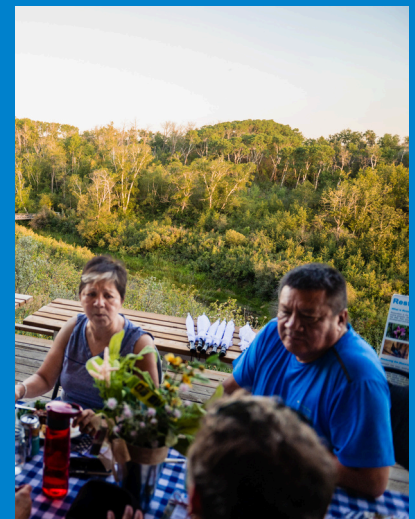
All experiences, volunteer, and educational opportunities can be tailored to meet the specific goals of a group. Meewasin's programs are ideal for **corporate retreats**, **team-building icebreakers**, and **professional learning exchanges**. These flexible options also cater to **birthday parties** and **travel trade itineraries**.

Meewasin On The Go!

Can't get to us? We'll come to you! This mobile service delivers the same high-quality storytelling and nature-based learning to any chosen location, ensuring **everyone** can connect with Saskatoon's natural heritage regardless of their proximity to the trail. **Please note** that all private programs are subject to specific terms, seasonal availability, and guest minimums.

Ready to start planning?

Contact events@meewasin.com to see what we can make happen.



Meewasin 

Trade pricing available - All tours and experiences include a donation to Meewasin's Conservation and Education efforts in the Meewasin Valley of Saskatoon - **Custom add-ons available** - **All pricing in CAD - GST (5%) & PST (6%) NOT INCLUDED** - Events and pricing may be subject to change - For more information about Meewasin experiences go to: meewasin.com/experiences or contact: events@meewasin.com