



## NEWS RELEASE

**For Information Contact:**

Mitchell Happ  
Marketing Coordinator  
306-477-9121  
mhapp@meewasin.com

**For Immediate Release:**

July 14, 2025

### **Work to Resume on Kiwanis Promenade Trail Enhancement Project**

**Saskatoon** – The Meewasin Valley Authority plans to resume work on the Kiwanis Promenade Trail Enhancement Project starting this week. This work is a continuation of the project that began in 2024 as part of planned trail enhancements through the downtown core in Kiwanis Memorial Park.

Work to be completed includes:

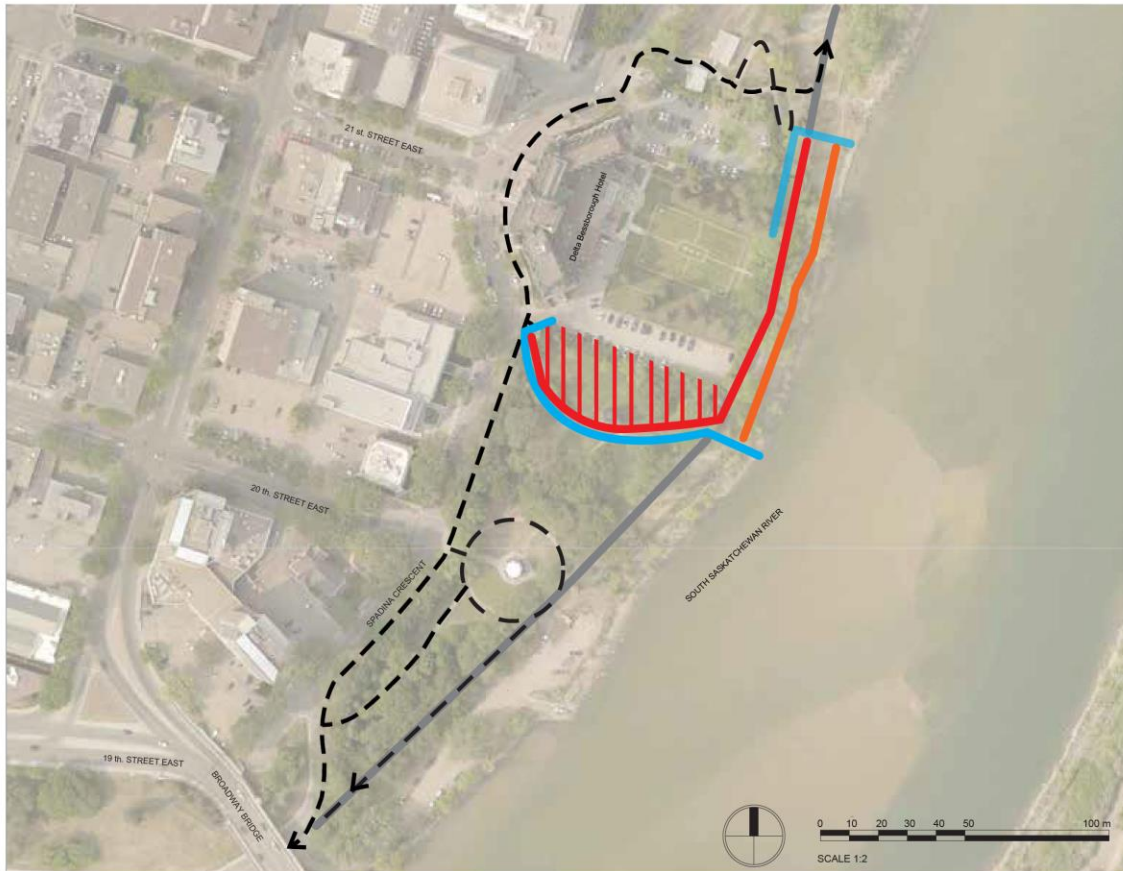
- Demolition and removals
- Trail and feature lighting installation
- Trail paving and widening
- Site furniture installation
- Soft landscape restoration and new plantings
- Restoration of the construction access and staging area

Fencing, signage and detours will be in place, and the section of The Meewasin Trail located behind the Delta Bessborough Hotel Gardens will be closed. Pedestrians will be detoured to the sidewalk along Spadina Crescent. Construction will not affect access to adjacent streets. Detours are expected to be in place for at least two months.

For your safety, please use the designated detours and do not enter the work zone. Please proceed with caution as construction equipment and vehicles will be active in and around the site.

## Kiwanis Memorial Park South Primary Trail Expansion

### *Pedestrian Detours*



### Legend

-  Casual Trail CLOSED During Construction
-  Primary Trail CLOSED During Construction
-  Construction Fence
-  Primary Trail Open
-  Proposed Potential Pedestrian Detours
-  Contractor Staging Area

#### Notes

- Boat Launch Remains Open



### **About Meewasin Valley Authority**

*The Meewasin Valley Authority exists to ensure a healthy and vibrant river valley, with a balance between human use and conservation by:*

- *Providing leadership in the management of its resources;*
- *Promoting understanding, conservation and beneficial use of the Valley; and*
- *Undertaking programs and projects in river valley development and conservation, for the benefit of present and future generations.*

*There are 67 square kilometers of land and 108km of established trail, which has seen up to 2.365 million trail visits per year, in the Meewasin Valley. The area also features sites that help people to connect to nature through experiences such as Beaver Creek Conservation Area, the Meewasin Northeast Swale, Saskatoon Natural Grasslands, the River Landing Spray Area, and the Cameco Meewasin Skating Rink @Nutrien Plaza. Meewasin is a non-profit organization that relies on donations and volunteers for sustainability. To get involved or learn more visit [www.meewasin.com](http://www.meewasin.com)*

**Meewasin Valley Authority**

402 Third Avenue South, Saskatoon, Saskatchewan, Canada S7K 3G5

P: 306-665-6887 F: 306-665-6117

[www.meewasin.com](http://www.meewasin.com)