



# Maple Grove Master Plan

*Design Charette Summary Report*



---

*Meewasin is located on Treaty 6 Territory and the Homeland of the Métis. We humbly acknowledge the traditional caretakers of the land and honour the First Nations and Métis people of this place.*

---



## Table of Contents

<b>What is a Design Charrette?</b> .....	4
<b>The Maple Grove Master Plan</b> .....	4
Project Site and Scope.....	5
<b>Maple Grove Design Charrette Overview</b> .....	5
Participants.....	5
The Program .....	6
Materials .....	7
The Product.....	8
<b>Conceptual Site Plans</b> .....	9
<b>Team 1 – <i>The Maple Bugs</i></b> .....	9
<b>Team 2 – <i>Aspen Pathway Protectors</i></b> .....	12
<b>Team 3 – <i>Golden Prairie Shoreline</i></b> .....	15
<b>Team 4 – <i>Atlantis Clear Water</i></b> .....	18
<b>Summary of Results</b> .....	21
Guiding Principles .....	21
Design Elements .....	21
<b>Post Charrette Survey</b> .....	24
<b>Appendix A – Design Charrette Schedules</b> .....	26
<b>Appendix B – Team Discussion Guide</b> .....	28

## What is a Design Charrette?

A design charrette is an intensive planning session where stakeholders, designers, and others collaborate on a vision for development. It provides a forum for ideas and offers the unique advantage of giving immediate feedback to the designers. More importantly, it allows everyone who participates to be a mutual author of the plan.

Participants are led through the process by a facilitator and support staff. Participants work in groups to develop design ideas and a conceptual design that will be presented to everyone at the completion of the charrette. All design ideas presented can provide a basis for further design development.

## The Maple Grove Master Plan

Maple Grove is a Meewasin owned rural property located south of Saskatoon along the western banks of the South Saskatchewan River. The site has been used primarily for recreation since as early as 1915, with cottagers camping on the site in the early years. Meewasin purchased the property in 1997 which included a mobile trailer park to remain on-site for 25 years at which time Meewasin would turn the site back into natural space.

Meewasin has initiated a master planning process that will provide a basis for future decision making, including plans for development and operations. Based on a planning statement developed in 2000, it is anticipated that the site will remain predominantly in a natural state, with potential opportunities for low impact passive recreation. With future Meewasin Trail development expected south from the Gordie Howe Bridge, this location could extend the southern trail terminus on the west side of the river.

The charrette was the initial exploration of design options and part of the preliminary stakeholder outreach in the Master Planning process shown below, intended to provide an opportunity to explore any number of ideas in a collaborative team setting. The plans and program ideas generated provide the basis for further design development. In most cases, design ideas from a number of teams end up informing the final master plan.

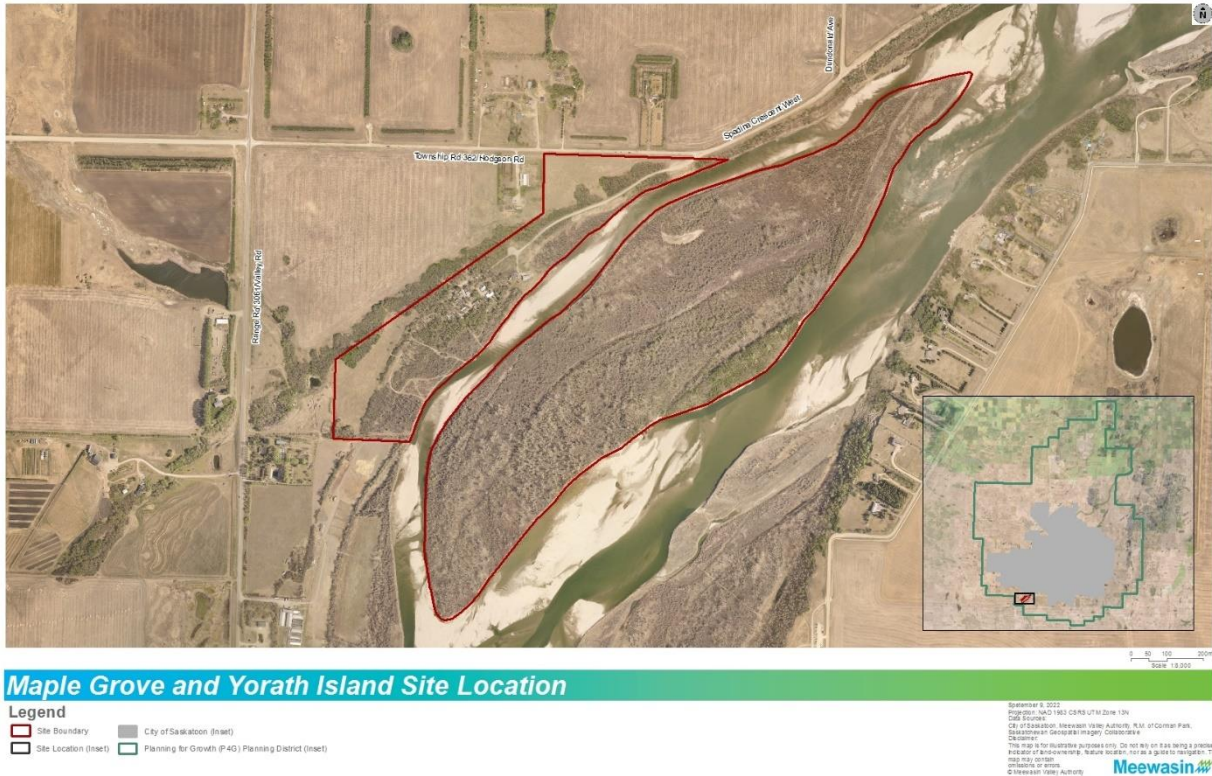


\*Note: Approvals Will Be Sought for the Overall Master Plan and for Each Phase of Implementation.

Complete
  Underway
  To come
  Design Charrette

## Project Site and Scope

Maple Grove is a 22.66 Hectare rural riverfront parcel, including a portion of the adjacent Yorath island (68.96 Ha), within the RM of Corman Park. It is located south of Saskatoon on the west side of the South Saskatchewan River, about one kilometer upstream of the Queen Elizabeth Power Station and just over one kilometer east of Valley Road. It is directly south of Township Road 362, also known as Hodgson Road.



## Maple Grove Design Charrette Overview

Meewasin hosted the Maple Grove Master Plan Design Charrette over the span of two weeks from September 22<sup>nd</sup> to October 6<sup>th</sup>, with a total of 42 participants. It was facilitated by Ghislaine McCleod from Capital G Communications. Ghislaine assisted with leading the program, organizing charrette exercises, developing team discussion guides, and recording team design concepts.

## Participants

Participants included representatives from:

- Meewasin Valley Authority and advisory committee members
- City of Saskatoon
- Rural Municipality of Corman Park
- Various community groups
- Other professionals and topic area specialists

Participants were organized into four teams. Three of the teams were guided through the process by local landscape architects, William Hrycan from Crosby Hanna and Associates, Marilyn Gould from HTFC Planning and Design, and Anna Ringstrom from Oxbow Architecture. Each team also included one Meewasin representative, while the fourth team consisted of all Meewasin staff with Meewasin’s Design Assistant Jenna Stusek providing guidance.

**The Program**

The first day of the Charrette, held on September 22<sup>nd</sup> at the Gordie Howe Sports Complex, began with general introductions and a presentation providing background information on the Maple Grove site. Following the presentation, participants traveled to Maple Grove for a site tour led by Alan Otterbein, Manager of Design and Development and Renny Grilz, Resource Management Officer, with Meewasin. Following the tour, teams began to collaborate on design ideas.

After day one, two follow up meetings organized by each team lead were held on September 28<sup>th</sup> and October 3<sup>rd</sup> to further refine the design concepts.





On October 6<sup>th</sup>, all participants gathered at the Gordie Howe Sports Complex and each team presented their final design concept, describing the guiding principles, primary design elements, challenges and recommendations of their design. Full Charrette schedules can be found in Appendix A.



## Materials

Each team had access to several reference materials including:

- [Maple Grove Master Plan FAQ](#)
- [Maple Grove Baseline Inventory](#)
- [Rural Municipality of Corman Park Zoning Bylaw](#)
- [Saskatoon North Partnership for Growth District Land Use Plan](#)
- [Preliminary Survey Results](#)
- [Maps of site location, soils, surficial geology, hydrology, infrastructure, land cover, vegetation](#)
- Team Discussion Guides (Appendix B)

Each team was also provided with the following materials to support design work:

- A [base map](#) of the site with key features:
  - Property boundary
  - Contour elevations
  - 1:500 flood line
- Tracing paper and masking tape
- Coloured markers, pens, and pencils
- Post-it notes and paper pads.

## The Product

Each team was tasked with developing a 'Conceptual Site Plan' considering the following:

- Guiding Principles
- Pedestrian and vehicular circulation, including connections to existing networks
- Site amenities
- Programming
- Revenue Generation



## Conceptual Site Plans

Each of the four charrette teams produced a Conceptual Site Plan that was presented on the last day of the Charrette, October 6<sup>th</sup>. The following section includes these drawings and lists the key features and guiding principles for each.

### Team 1 – *The Maple Bugs*

(William Hrycan, Crosby Hanna & Associates)

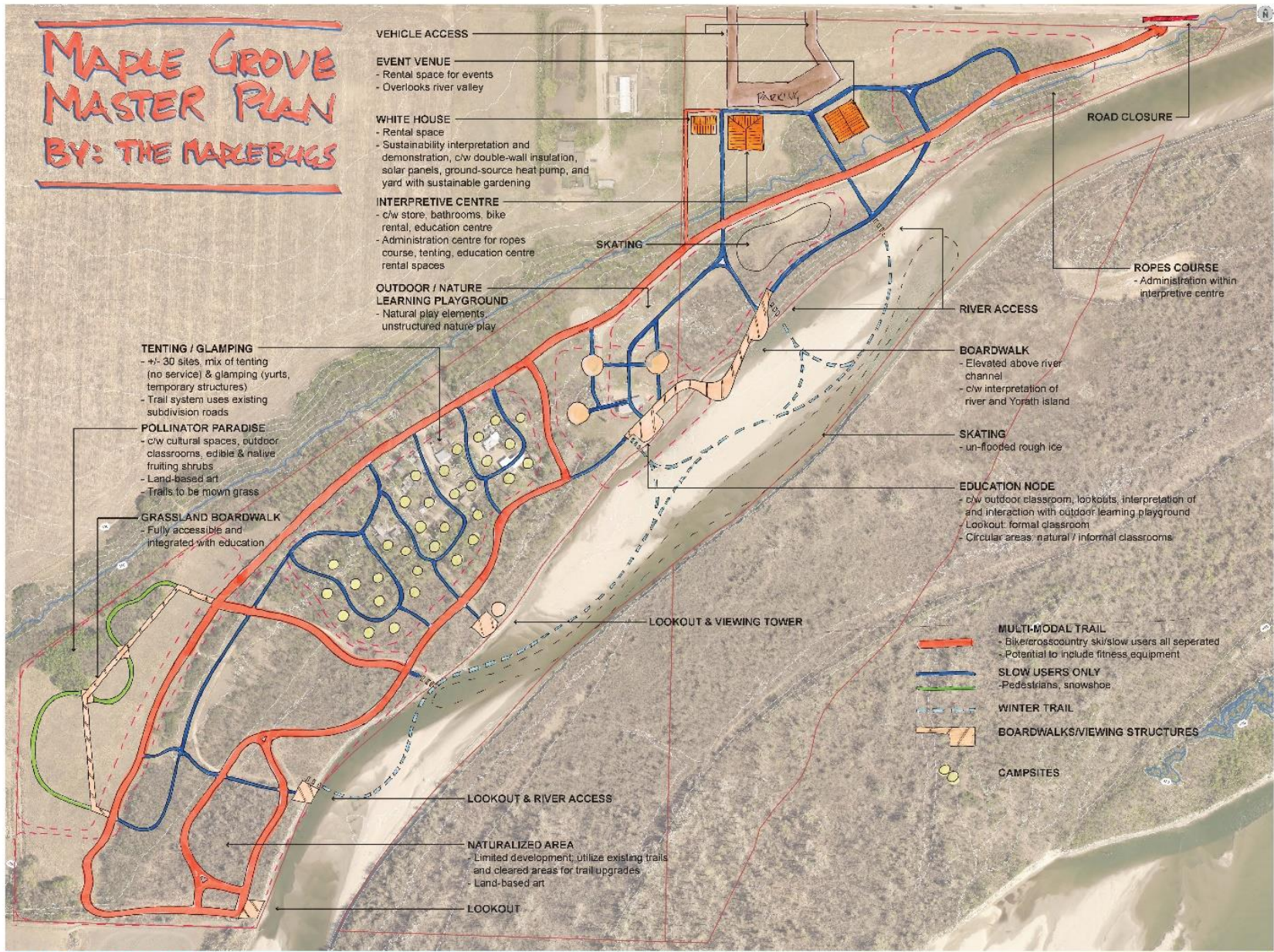
#### Guiding Principles

- Emphasize education, including education of natural ecology and the benefits of maintaining un-touched landscape
- Conservation of existing natural landscape (especially Yorath Island)
- Utilize existing infrastructure and site disturbance: all pathways and areas of most intense development are on disturbed areas or existing pathways
- Provide a balance of passive and active recreation opportunities
- Interpretation of First Nations culture, history of the site, ecology.

#### Program Elements

- **Relocated White House**
  - Incorporated into a sustainability model of residential building and yard design
  - A potential rental space
- **Interpretive Centre**
  - Houses bathrooms
  - Potential store and coffee shop
  - Host equipment rentals for bikes, skates, canoes
  - Potential rental space
- **Event Venue**
  - Simple structure, potentially only a seasonal structure with roof and open walls
  - Limited to simple events, not fully serviced or a fancy wedding venue
- **Pathway Network**
  - Strong connection to Meewasin trail system when it extends to the site
  - Separation of users is key
  - Fully accessible (as much as possible)
  - Accessible structures including boardwalks
- **Education Node**
  - Series of exterior classroom spaces with range of formal and informal design
  - Connected to outdoor learning opportunities
  - Natural playground that facilitates interaction with the natural environment
- **Ropes Course**
  - High or low ropes course
  - Interaction with slopes and within tree canopies
- **Skating**
  - Flooded skating area south of the Interpretation Centre
  - Potential skating opportunities on wild ice

- **Tenting/glamping**
  - Rustic/remote tenting experience near the city
  - Glamping opportunities with yurts to make camping more accessible for urban dwellers
  - Limited services due to location within flood zone
- **Lookouts and Boardwalks**
  - Provide views of the river, Yorath Island, bird watching opportunities
  - Can be used as outdoor learning spaces
  - Provides education and interpretation opportunities
  - Also provide accessible routes through the site where connected with paved/crusher dust pathway
- **Pollinator Paradise**
  - augmented natural 'transition' landscape between grasslands/riparian area/aspen forest
  - a demonstration to highlight the beauty of the native landscape
  - Potential cultural opportunities, educational opportunities, houses land-based/ecological art, and edible species.
- **Naturalized Area**
  - Located in the southern third of the site with limited development
  - Multi-use trail network developed on existing trails/firebreaks
  - Potential for land-based/ecological art
- **Donor Recognition**
  - Not standard memorial benches or donor trees; rather, recognize donor opportunities of the entire landscape or key components (like boardwalk, pollinator paradise, education area)



Maple Grove and Yorath Island

Scale: 1:1000  
Meewasin

## Team 2 – Aspen Pathway Protectors

(Marilyn Gould, HTFC Planning & Design)

### Guiding Principles

- Education focus
- Equity of access
- Development to support cost neutral approach

### Program Elements

- **Interpretive Centre**
  - Washrooms
  - Permanent interior lease spaces for food related vendors
  - Educational programming spaces
  - Outdoor programmable spaces for rentals and seasonal vendors (complete with utility connections and permanent deck with view to river)
- **Retreat Centre**
  - Bookable, overnight retreat center with 5-10 bedrooms and shared kitchen, gathering spaces and washrooms
  - Shared recreation and studio spaces, which could be rented separately
  - Tent camping office and security zone with 24 hour-controlled access firewood, washrooms and refrigerated food lockers
  - Patio space
- **Amphitheatre**
  - Near Interpretive Centre and Retreat Centre as meeting point for public, classes or retreat visitors, could be bookable or open programming
- **Parking/Vehicle Access**
  - Throughout upper and mid-level, no car access past entrance point to day use sites (maintenance and research activities are an exemption)
  - Controlled access into lower/day use areas and 24 hour access/controlled access into upper area
- **Bike Access/Parking**
  - Provision of bike parking at upper level, with tenting spots, at playground and near day use spaces/trailheads
  - Bike access not permitted on trails and in food forest
- **Small Boat Access**
  - Non-motorized boat launch/landing for day use
- **Tent Camping**
  - Incorporated into flood fringe zone on slope between existing roadway and upper development
  - Walk/ride in spaces only, parking available in upper development zone
  - Could be supported with camping supply rentals by seasonal vendor
  - Supported with Retreat Centre amenities/24 hour access
  - Each site to have bike parking, fire pit, tent pad, picnic table and electrical service
- **Natural Play Area**
  - Informal and “natural” play opportunities for families and school groups
  - Story telling circle

- **Viewing tower**
  - Bird/Yorath Island viewing tower and educational information
- **Day Use Area**
  - Walk in spaces for day use family/public/educational uses
  - Seasonal washrooms only
  - Provision of potable water would be seasonal and temporary
  - Use existing mobile home sites to begin layout and restoration of sites
  - Provide “demonstration” gardens (locally appropriate plantings with educational information)
- **Food Forest**
  - Programmed and developed with the University of Saskatchewan
  - Free and equitable access to visitors
  - Seating circle for educational and visitor use
  - Maintenance/research building built to flood proof requirements, seasonal use, permanent washroom may be possible
- **Hiking Trails/Snowshoe/Cross Country Skiing Trails**
  - Following existing paths where possible, layout to work to keep snow shoeing on existing trails and skiing routed to be established in Food Forest, linking to parking lot for day use area
  - No skate skiing trails here, not enough trail width available
- **Wayfinding and Interpretive Signage**
  - Throughout the site, focusing on various topics depending on location



## Team 3 – Golden Prairie Shoreline

(Anna Ringstrom, Oxbow Architecture)

### Guiding Principles

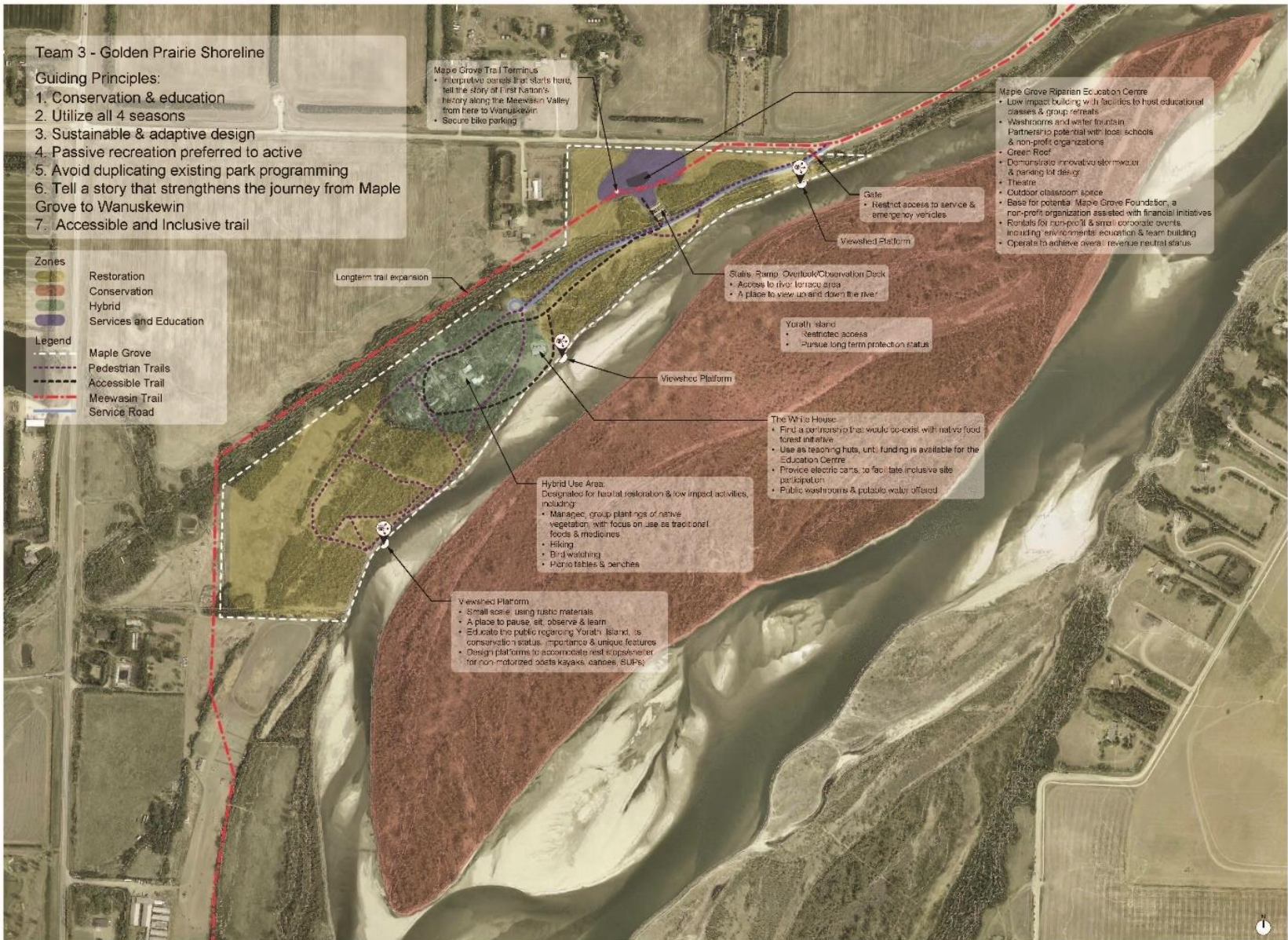
- Conservation and Education
- Utilize the site during all four seasons
- Embrace sustainable and adaptive design
- Avoid duplicating existing local programming
- Passive recreation preferred to active
- Commitment to accessible and inclusive site design
- Tell a story that strengthens the journey from Maple Grove to Wanuskewin

### Program Elements

- **Riparian Education Centre**
  - Building that can be rented to non-profit organizations, or corporations for short-term rentals
  - Non-profit organizations providing full-time programming including local school divisions for outdoor learning excursions
  - Includes a theatre, classroom space, washrooms
  - Green roof design demonstrating a commitment to innovative stormwater management
  - Point of entry to the site, including secure bike parking and interpretive panels
  - Parking lot with innovative stormwater management and tree cover
  - Outdoor classroom with a fire pit
  - Native plantings
- **Meewasin Trail Terminus**
  - Meewasin Trail terminus at the Riparian Education Centre, with possibility of expansion along the southwest edge of the site, setback from the river which continues south from the Maple Grove Site
- **Camping**
  - Supervised overnight tenting that supports the goals of education
  - Located in the Hybrid Use Zone
- **Food Forest**
  - An area of mass plantings at the site of the former mobile homes
  - Trees, shrubs and perennials with interpretation where visitors can learn about native plant species that have traditionally provided food and medicines for humans
- **Restoration Zone**
  - Areas that are not currently in a natural state that could be rehabilitated and return to one
- **Conservation Zone**
  - Areas of the site that are currently in a primarily natural state

- **Hybrid Use Zone**
  - Former mobile home site
  - Low impact development
  - Food Forest plots
  - Benches and picnic tables
- **Service and Education Zone**
  - Located near the road in a current agricultural area
  - Future Riparian Education centre
- **Yorath Island**
  - Included in the conservation zone with no future accommodation for human access
  - Ecologically important, preserve it as a wildlife area
- **White House**
  - Education Centre offering educational opportunities, shelter and gathering space
  - Support overnight camping and general site visitors by providing drinking water and bathrooms
  - Possibility for electric cart rentals
  - Once funding is secured for the new Riparian Education Centre, the White House can be repurposed or relocated/removed
- **Pedestrian Only Trails**
  - The Education Centre would serve as the trailhead to a network of trails at Maple Grove
  - A viewing platform at the top of the slope, adjacent to the Centre, where visitors can view up and down the river and look down over the site
  - Stairs and an accessible ramp would lead visitors down the riverbank slope to the river terrace area
  - Smaller river viewing platforms are to be situated at key overlooks along the trail network, offering educational and viewing opportunities
  - The trail network makes use of existing paths and roads, including those that are currently mowed
  - A paved, accessible trail from the Education Centre to a loop around the Hybrid Zone
  - Viewing platforms could also serve as resting points for non-motorized watercraft including canoes, kayaks and stand-up paddleboards





## Team 4 – *Atlantis Clear Water*

(Jenna Stusek, Meewasin Valley Authority)

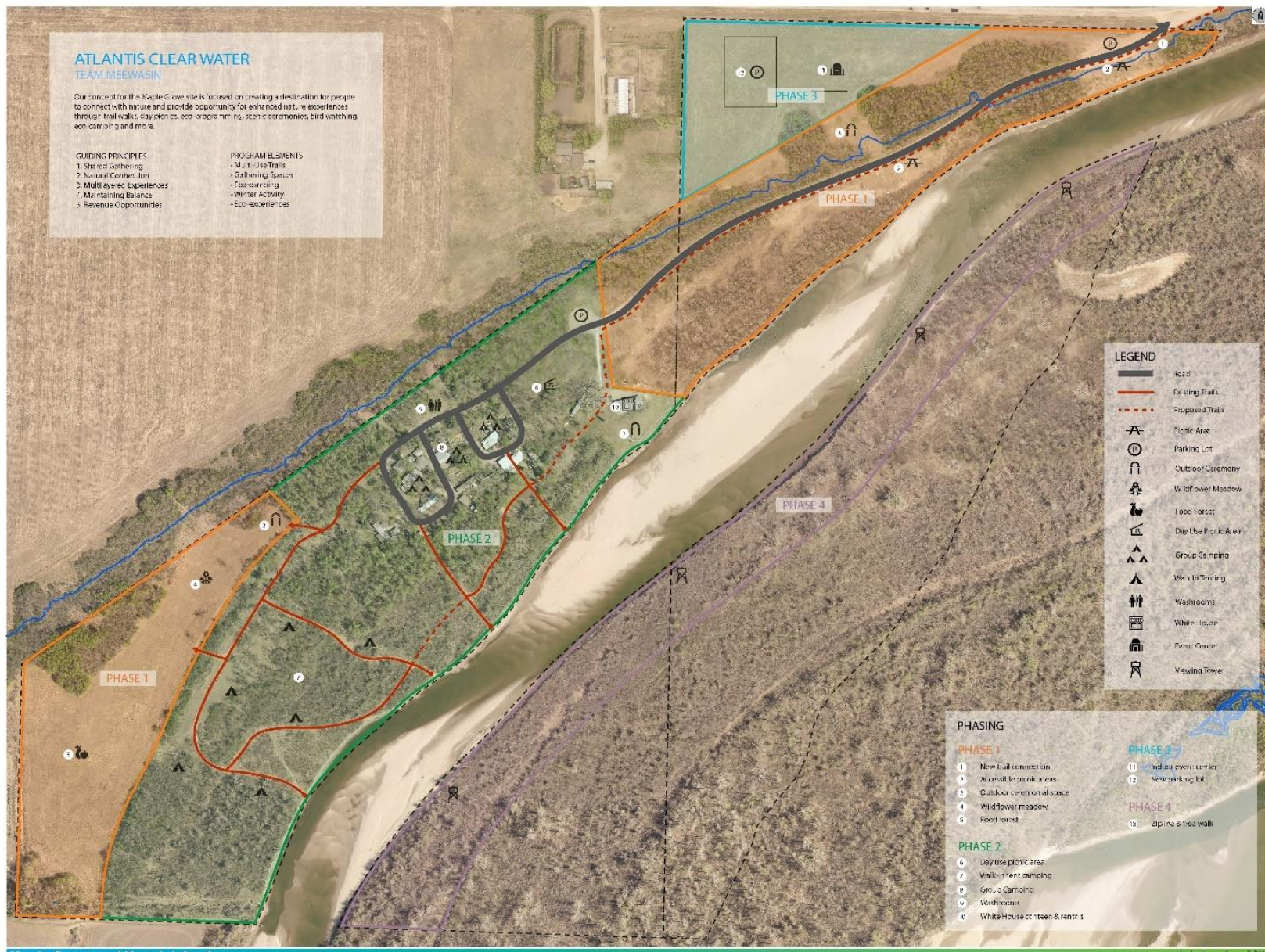
### Guiding Principles

- Shared Gathering
- Natural Connection
- Multilayered Experience
- Maintaining Balance
- Revenue Generation

### Program Elements

- **Multi-Use Trails**
  - Multi-use crusher dust trails throughout site for walking, biking, skiing, snowshoeing
- **Day Use Areas**
  - Free day use areas with picnic tables, fire pits or barbeques, trash receptacles
  - Rentable day use shelters for larger groups with picnic tables, fire pits or barbeques, trash receptacles
- **Ceremonial Spaces**
  - Multiple outdoor ceremonial spaces available to rent for cultural ceremonies, weddings, and other events
  - Located near former artist's studio, White House lawn, and wildflower meadow
- **Roadways**
  - Keep existing road with the installation of an admission gate at the entrance to the current trailer park area
- **Wildflower Meadow**
  - Establish a wildflower meadow in the northern half of the south hayfield through volunteer planting programs
  - Mow walking paths throughout
- **Food Forest**
  - Establish a food forest of native and non-native edible perennial species through volunteer planting and donor programs
  - Provide tours and harvesting programs
- **Interpretive signage**
  - Located throughout the trails, wildflower meadow and food forest
- **Eco-programming**
  - Offer various eco-programming around invasive species removal, native species planting, clean up campaigns
- **Group Camping**
  - Three group camping sites in trailer park loops,
  - Maximum 10 tents, with fire pits, picnic tables and dark sky lighting

- **Tenting**
  - Walk in tent sites along the trails at the south end of the site
  - Each with a fire pit and picnic table
  - Possibility for winter camping
- **Yurt Camping**
  - Yurt camping sites with seasonal temporary yurt structures for easy and accessible camping experiences with basic camping essentials provided
- **Washrooms**
  - Temporary washrooms near group camping area, trailer style
- **White House**
  - Keep White House as is with minor non-structural renovations
  - Host a camp canteen that would provide basic camping essentials, snacks and beverages, and rentals such as paddle boards, rafts, kayaks, snowshoes, cross country skis
- **Permanent Event Center**
  - If enough interest is generated, build a permanent event center on upper hayfield near existing road with permanent washrooms and parking lot.
  - This center would be multipurpose used for a variety of events or programming
- **Journey to Yorath Island**
  - Extending the site to Yorath Island by a zipline and tree walk with viewing towers along the shoreline as a low impact way to experience the natural island



**ATLANTIS CLEAR WATER**  
**TEAM MEEWASIN**

Our concept for the Maple Grove site is focused on creating a destination for people to connect with nature and provide opportunity for enhanced nature experiences through trail walks, day picnics, eco-origami, scenic ceremonies, bird watching, eco-camping and more.

**GUIDING PRINCIPLES**

- 1. Shared Gathering
- 2. Natural Connection
- 3. Multisensory Experiences
- 4. Maintaining Balance
- 5. Revenue Opportunities

**PROGRAM ELEMENTS**

- Multi-Use Trails
- Gathering Spaces
- Farm-to-table
- Winter Activity
- Eco-experiences

- LEGEND**
- Road
  - Existing Trails
  - Proposed Trails
  - Picnic Area
  - Parking Lot
  - Outdoor Ceremony
  - Wildflower Meadow
  - Food Forest
  - Day Use Picnic Area
  - Group Camping
  - Walk-In Tenting
  - Washrooms
  - White House
  - Pointy Cabin
  - Viewing Tower

- PHASING**
- PHASE 1**
- 1 New trail connection
  - 2 Available picnic areas
  - 3 Outdoor ceremony platform
  - 4 Wildflower meadow
  - 5 Food forest
- PHASE 2**
- 6 Day use picnic area
  - 7 Walk-in tent area
  - 8 Group camping
  - 9 Washrooms
  - 10 White House & tents
- PHASE 3**
- 11 Indian event center
  - 12 New parking lot
- PHASE 4**
- 13 Zip line & tree walk

Maple Grove and Yorath Island

© 2023 Meewasin. All rights reserved. This document is the property of Meewasin and is not to be distributed, copied, or reproduced without the written consent of Meewasin. Meewasin is a registered trademark of Meewasin. Meewasin is a registered trademark of Meewasin. Meewasin is a registered trademark of Meewasin.

## Summary of Results

### Guiding Principles

Although similar in some respects, each team's guiding principles were unique to their team. These are listed below, sorted into Meewasin's three mandate areas, Education & Experiences, Development and Conservation, with funding model as a separate item (if noted).

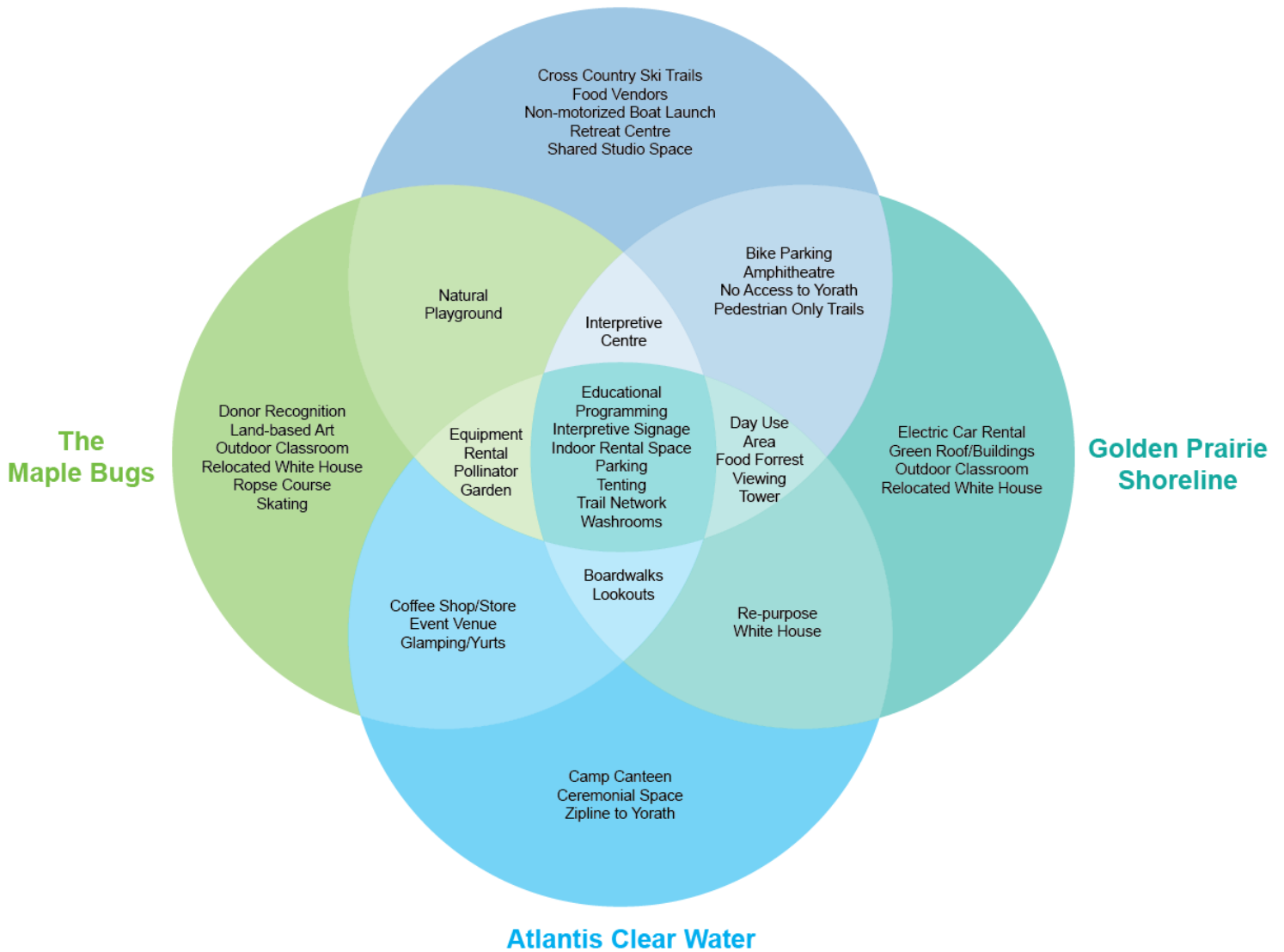
Guiding Principles	Team 1 The Maple Bugs	Team 2 Aspen Pathway Protectors	Team 3 Golden Prairie Sunset	Team 4 Atlantis Clear Water
<b>Education &amp; Experiences</b>				
Education	x	x	x	
First Nations Interpretation	x			
Four Season Use			x	
Storytelling			x	
Shared Gathering				x
Natural Connection				x
Multilayered Experience				X
<b>Development</b>				
Accessibility		x	x	
Utilize existing infrastructure	x			
Passive Recreation			x	
Maintaining Balance				x
<b>Conservation</b>				
Conservation	x		x	
Sustainability			x	
Balance				x
<b>Funding Model (if noted)</b>				
Cost Neutral		x		
Revenue Generation				x

### Design Elements

While each team created a unique design concept with a unique focus, many elements were common amongst the different designs. The matrix and Venn diagram below summarize all the program elements proposed and the following points highlight the most common and reoccurring design elements that resulted from the charrette:

- Educational Programming
- Interpretive Signage
- Indoor Rental Space
- Parking
- Tenting
- Trail Network
- Washrooms

## Aspen Pathway Protectors



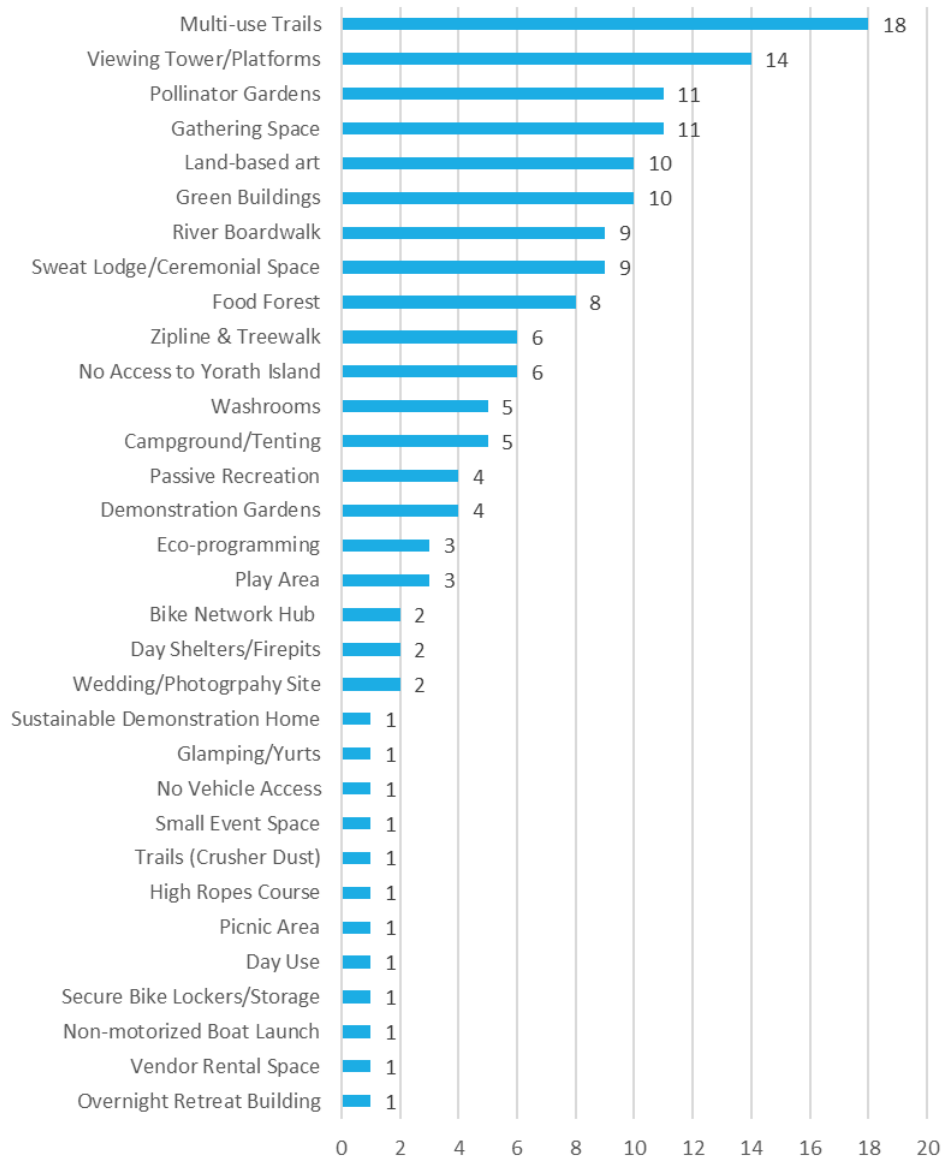
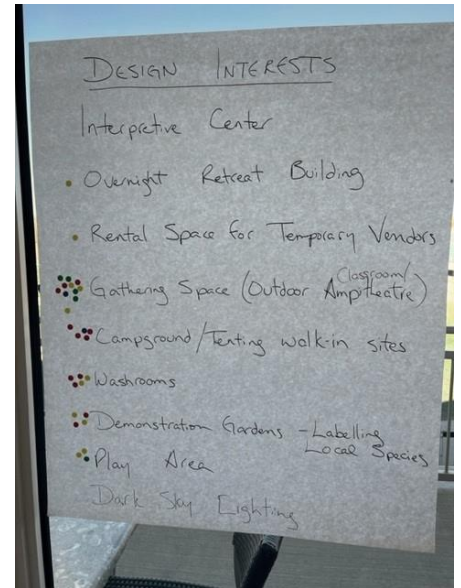
## Program Elements Matrix

Program Elements	Team 1 The Maple Bugs	Team 2 Aspen Pathway Protectors	Team 3 Golden Prairie Shoreline	Team 4 Atlantis Clear Water
Educational Programming	X	X	X	X
Indoor Rental Space	X	X	X	X
Interpretive Signage	X	X	X	X
Parking	X	X	X	X
Tenting	X	X	X	X
Trail Network	X	X	X	X
Washrooms	X	X	X	X
Boardwalks & Lookouts	X		X	X
Day Use Area		X	X	X
Equipment Rental	X	X		X
Food Forest		X	X	X
Interpretive Centre	X	X	X	
Pollinator/Wildflower Garden	X	X		X
Viewing Tower/Platform		X	X	X
Amphitheatre		X	X	
Bike Parking		X	X	
Coffee Shop/Store	X			X
Event Venue	X			X
Glamping/Yurts	X			X
Natural Playground	X	X		
Naturalized Area	X		X	
No Access to Yorath		X	X	
Outdoor Classroom(s)	X		X	
Outdoor Rental Space		X		X
Pedestrian Only Trails		X	X	
Relocated White House	X		X	
Repurposed White House			X	X
Camp Canteen				X
Ceremonial Space				X
Cross Country Ski Trails		X		
Donor Recognition	X			
Electric Cart Rental			X	
Food Vendors		X		
Green Roof			X	
Land Based Art	X			
Non-Motorized Boat Launch		X		
Retreat Centre		X		
Ropes Course	X			
Shared Studio Space		X		
Skating	X			
Zipline to Yorath				X

## Post Charrette Survey

Following the team presentations, all design elements from each team were written down, and participants were given five stickers representing one million dollars each. Participants were then asked which design element they would be most likely to invest their money in and placed a sticker near the corresponding design element. Results of this survey are shown below. The design elements most likely to be invested in were:

- Multi-use Trails
- Viewing Tower/Platforms
- Pollinator Gardens
- Gathering Space
- Land-based art
- Green Buildings





Design elements that did not garner any investment included:

- Disc Golf
- Dogs
- Wild Ice Skating
- Gallery/Art Sale Space
- Canteen
- Non-native Plantings
- Bike Trails
- Mowed Trails
- Cultural Camp
- Interpretive Nodes
- Electric Mobility Rental
- 24 Hour Use
- Memorial Plantings/Access
- Maintenance/Research Structure
- Dark Sky Lighting
- Interpretive Center

# Appendix A – Design Charrette Schedules

<b>Charrette Schedule</b>	
Thursday, September 22, 2022	
<b>Time</b>	<b>Item</b>
7:45 AM	Facility Open
<b>8:00 AM</b>	<b>Open Meeting</b>
	Welcome
	Introductions / Icebreaker
	Schedule of the Day
	Overview of Master Plan & Site
	Overview of Charrette
9:45 AM	Break / Snack / Discussion
<b>10:00 AM</b>	<b>Detailed Site Presentations</b>
11:00 AM	Break into Groups
11:15 AM	Board Bus & Drive to Site
<b>11:30 AM</b>	<b>Site Tour</b>
1:30 PM	Drive back to Facility
1:45 PM	Group Design Work
4:30 PM	Closing Remarks

## Maple Grove Charrette Schedule

MORNING WRAP UP

Time	Item
7:45 AM	Facility Open
8:00 AM	Welcome Back
<b>8:15 AM</b>	<b>Team 1 presentation</b>
<b>9:00 AM</b>	<b>Team 2 presentation</b>
9:45 AM	Body Break / snack
<b>10:00 AM</b>	<b>Team 3 presentation</b>
<b>10:45 AM</b>	<b>Team 4 Presentation</b>
11:30 AM	Final Thoughts / Discussion
11:45 AM	Next Steps
<b>12:00 PM</b>	<b>Thank You / Meeting close</b>
12:00 PM	Lunch
<b>1:00 PM</b>	<b>Lunch Finished</b>

# Appendix B – Team Discussion Guide

**Maple Grove Site Design**  
**September 22, 2022**  
**Design Charette: Day One**

---

***Team Discussions***  
***2 hours 45 minutes***

**1. Review Survey Results**

*Thoughts on the results of each question*

- Were there questions you thought should be asked that weren't?
- Have the group discuss any additional questions.

**2. Discussion**

*Prompts for group direction.*

- a. How do you experience the Meewasin valley? What is your favorite thing to do?
- b. Envision the types of things you would want your great grandchildren to experience in the valley and how could Maple Grove contribute to this future?
- c. Consider opportunities for how development of Maple Grove could ensure the site is cost neutral or generate money for Meewasin.
- d. Share hopes and fears for this project and this part of the valley.

**3. Prepare "Guiding Principles" for Each Team (checklist)**

*What are our values as a group that will guide our design?*

- Direction on balance of conservation vs. recreation activities
- Direction on cost neutral plan vs. revenue generation
- Direction on development of site amenities vs. passive recreation
- Direction on expectations for tourism and site experiences
- Direction on access points

**4. "Gut Check"**

- Does our team's guiding principles align/reflect Meewasin's mission and values? National urban park considerations?
  - Conserve/Develop/Educate (Meewasin Mission)
  - Healthy & Vibrant, Sense of Community, Protecting the Legacy (Meewasin Vision)
  - Conservation, Access to Nature, Reconciliation (National Urban Park Project Pillars)

**5. Report out by each group on their Guiding Principles**

- Key areas of focus