



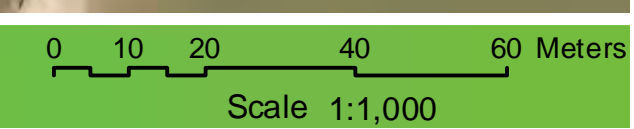
Maple Grove and Yorath Island Basemap

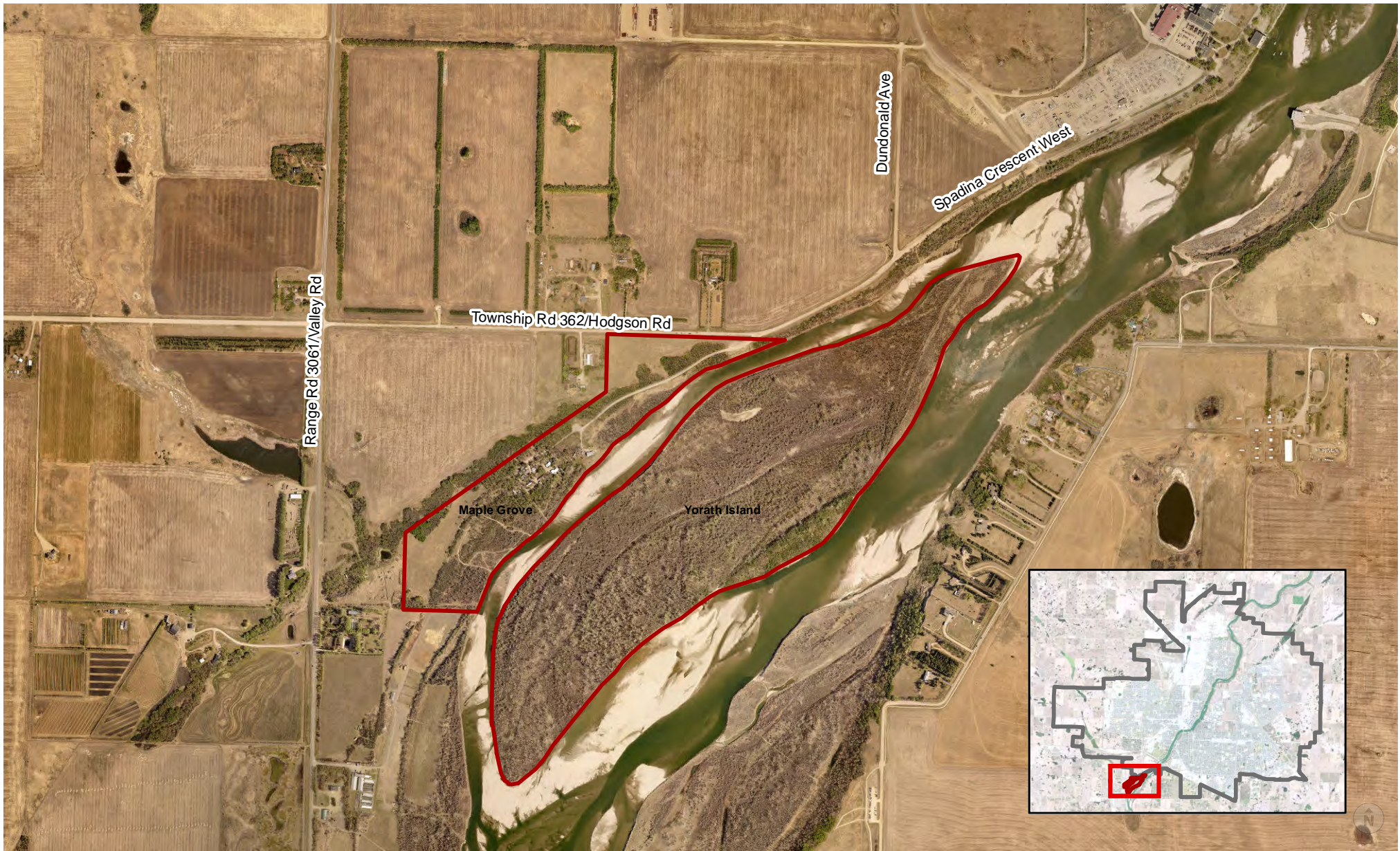
Legend
 Meewasin Valley Authority Ownership Parcels
 Approximate Safe Building Zone
 2m Elevation Contours

September 14, 2022
 Projection: NAD 1983 CSRS UTM Zone 13N
 Data Sources:
 Information Services Corporation; Meewasin Valley Authority; Saskatchewan Geospatial Imagery Collaborative; Water Security Agency

Disclaimer:
 This map is for illustrative purposes only. Do not rely on it as being a precise indicator of land ownership, feature location, nor as a guide to navigation. This map may contain omissions or errors.




© Meewasin Valley Authority **Meewasin**





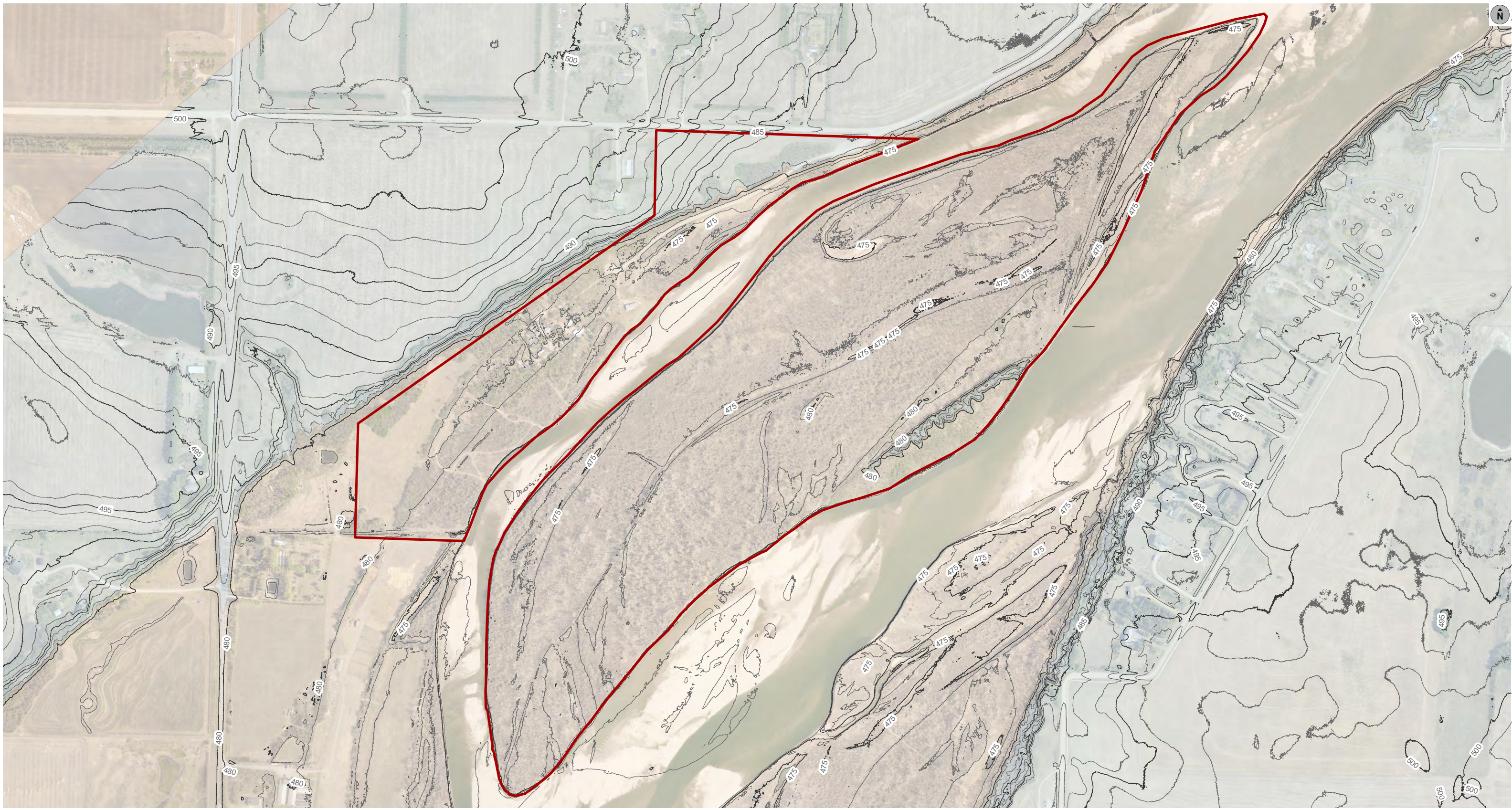
Maple Grove and Yorath Island Site Location

Legend

-  Site Boundary
-  City of Saskatoon (Inset)
-  Site Location (Inset)

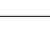


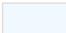
March 16 2022
 Projection: NAD 1983 CSRS UTM Zone 13N
 Data Sources:
 Meewasin Valley Authority
 Saskatchewan Geospatial Imagery
 Collaborative

Disclaimer:
 This map is for illustrative purposes only. Do not rely on it as being a precise indicator of land-ownership, feature location, nor as a guide to navigation. This map may contain omissions or errors.



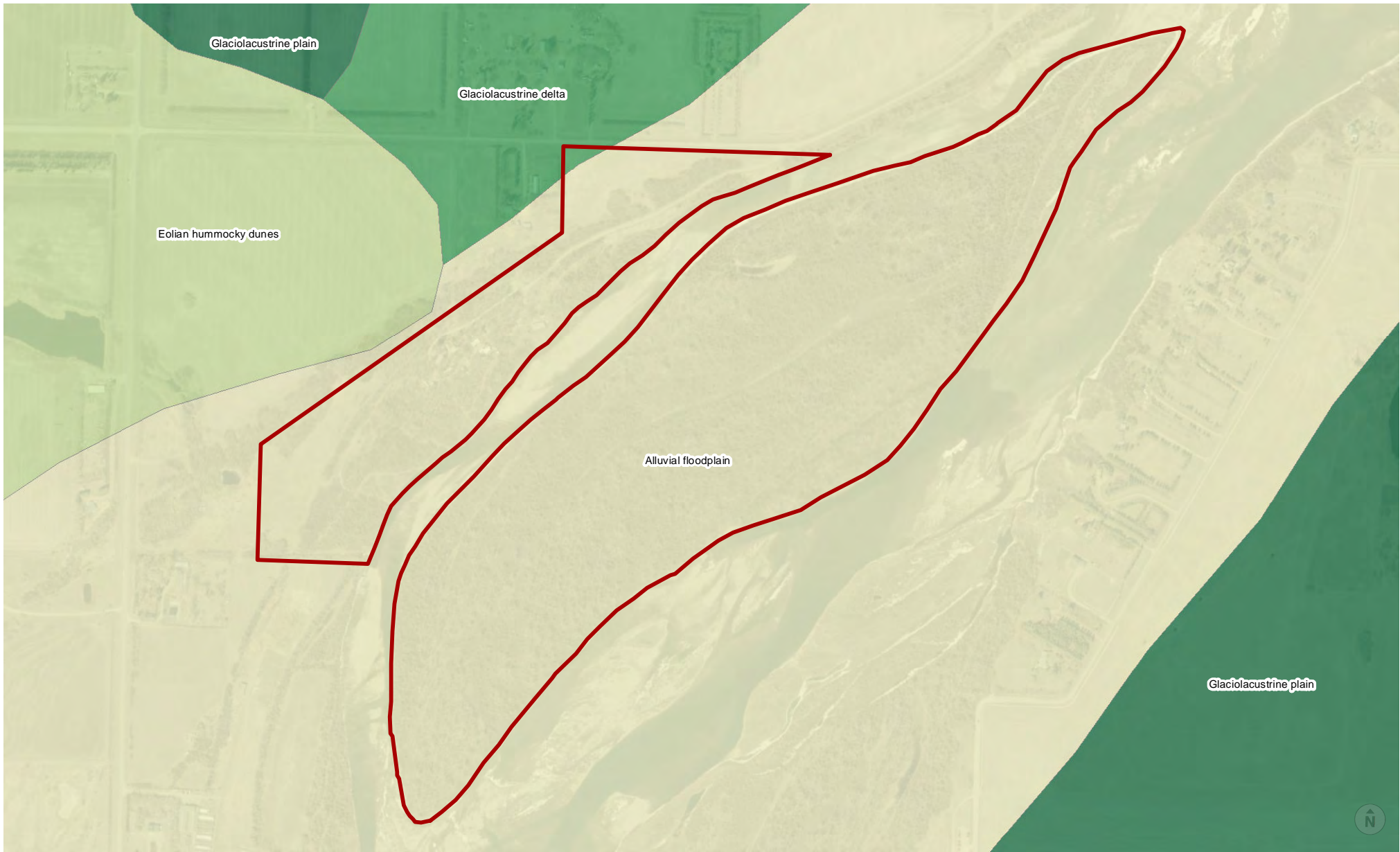
Maple Grove and Yorath Island Elevation Profile

Legend

-  5 m Contour Interval
-  2 m Contour Interval
-  Site Boundary
-  Approximate Safe Building Elevation (481M; ~1.2m safety factor)

September 14, 2022
 Projection: NAD 1983 CSRS UTM Zone 13N
 Data Sources:
 Meewasin Valley Authority, Saskatchewan Geospatial Imagery Collaborative,
 Water Security Agency
 Disclaimer:
 This map is for illustrative purposes only. Do not rely on it as being a precise indicator of
 land-ownership, feature location, nor as a guide to navigation. This map may contain
 omissions or errors.
 © Meewasin Valley Authority



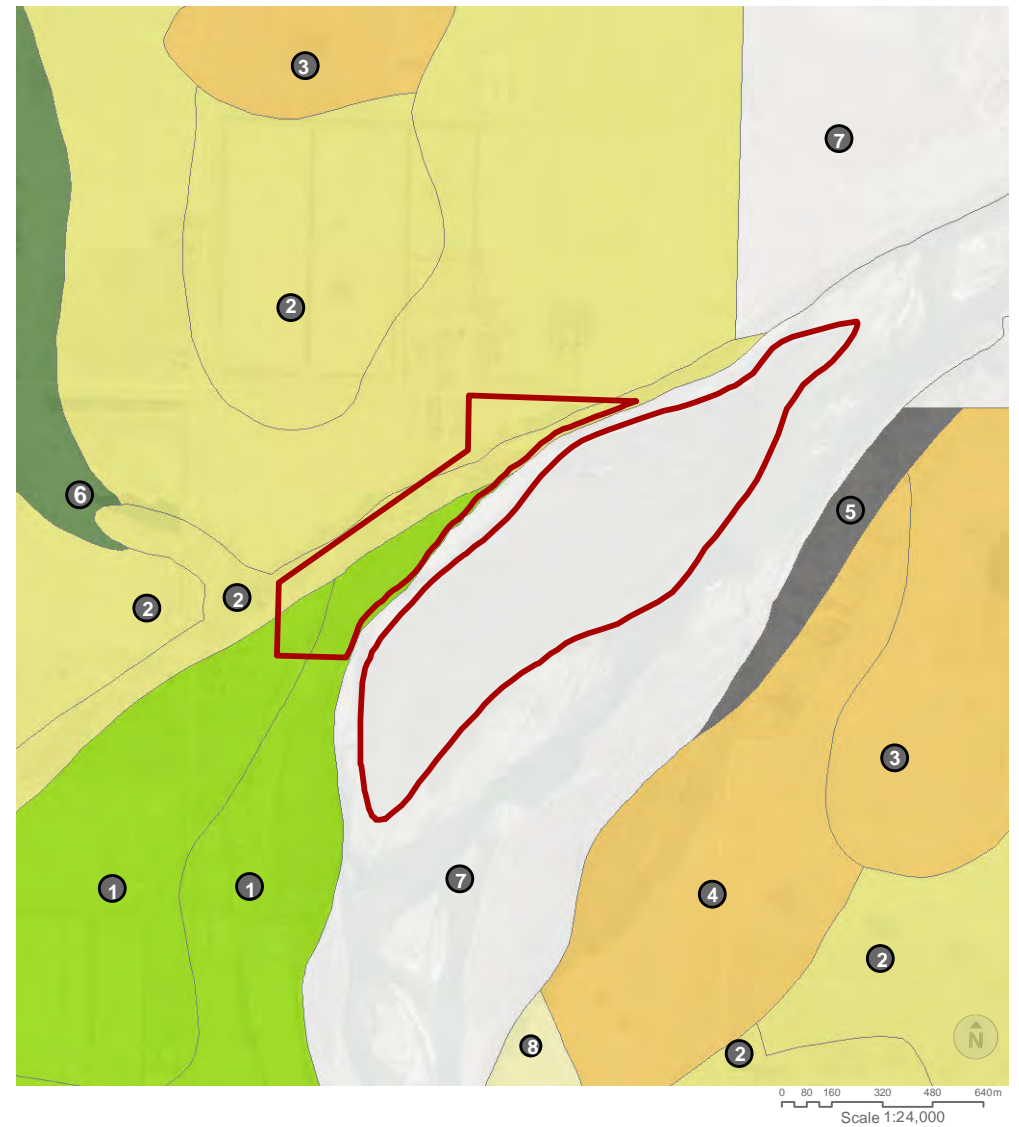
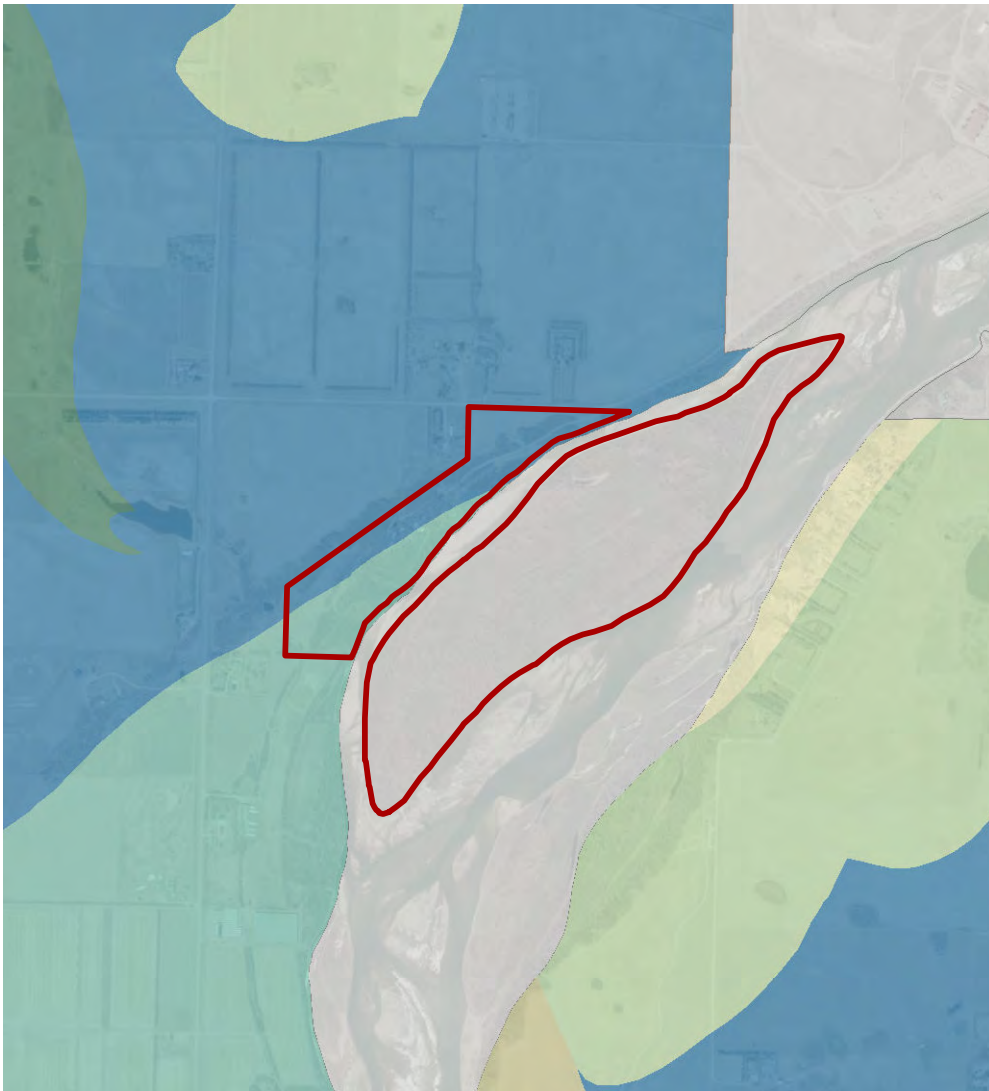


Maple Grove and Yorath Island Surficial Geology

- Legend**
- Alluvial Floodplain
 - Eolian Hummocky Dunes
 - Eolian plain
 - Glaciolacustrine Delta
 - Glaciolacustrine Plain
 - Site Boundary

March 23 2022
 Projection: NAD 1983 CSRS UTM Zone 13N
 Data Sources:
 Meewasin Valley Authority
 Government of Saskatchewan
 Saskatchewan Geospatial Imagery
 Collaborative

Disclaimer:
 This map is for illustrative purposes only. Do not rely on it as being a precise indicator of land-ownership, feature location, nor as a guide to navigation. This map may contain omissions or errors.



Maple Grove and Yorath Island Soils Profile

Legend

Type

- Loam
- Non-Soil
- Overflow
- Saline Wet Meadow
- Sand, Low Dunes, High Dunes
- Sandy Loam
- Thin, Overflow if slope class 1, 2, 3

Name

- 1** Mainly Alluvium Rego Chernozemic soils
- 2** Mainly Asquith Orthic Dark Brown soils
- 3** Mainly Bradwell Orthic Dark Brown soils, with Bradwell Eluviated Dark Brown soils on lower slopes
- 4** Mainly a mixture of Bradwell Dark Brown Chernozemic soils on mid- to upper slopes and Bradwell saline and carbonated Dark Brown Chernozemic soils on lower slopes
- 5** Hillwash
- 6** Mainly a mixture of Meadow saline and carbonated Rego Humic Gleysol soils
- 7** Non-Soil
- 8** Mainly weakly developed Vera soils

March 23 2022
 Projection: NAD 1983 CSRS UTM Zone 13N
 Data Sources:
 Meewasin Valley Authority
 Agriculture and Agri-Food Canada
 Government of Saskatchewan
 Saskatchewan Geospatial Imagery Collaborative

Disclaimer:

This map is for illustrative purposes only. Do not rely on it as being a precise indicator of land-ownership, feature location, nor as a guide to navigation. This map may contain omissions or errors.



0 25 50 100 Meters
Scale 1:2,200

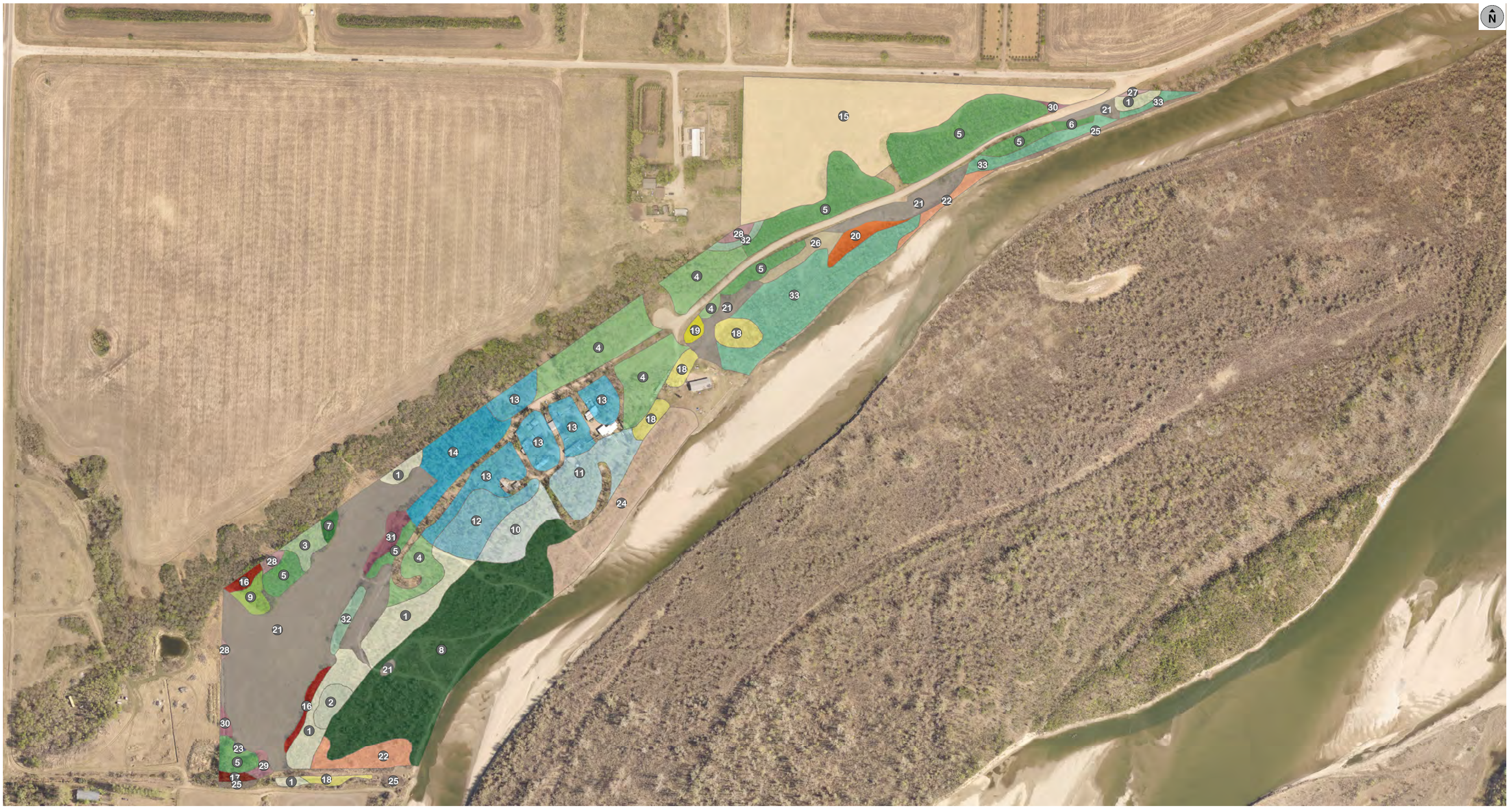
Maple Grove and Yorath Island Land Cover Profile

Legend

State of the Valley 2018 Land Use/Land Cover Categories					
Built Environment	Aquatic Systems	Forested & Shrubland Systems	Grassland Systems	Green Space	Other
Informal Road & Trail	River	Native & Naturalized	Naturalized Grass	Verge	Site Boundaries
Road & Rail	Wetland	Alforested	Tame Forage		
Urban & Rural Development					

September 13 2021
 Projection: NAD 1983 CSRS UTM Zone 13N
 Data Sources:
 Meewasin Valley Authority
 Saskatchewan Geospatial Imagery Collaborative

Disclaimer:
 This map is for illustrative purposes only. Do not rely on it as being a precise indicator of land-ownership, feature location, nor as a guide to navigation. This map may contain omissions or errors.



0 25 50 100m
Scale 1:4,000

Maple Grove Vegetation Inventory, 2000

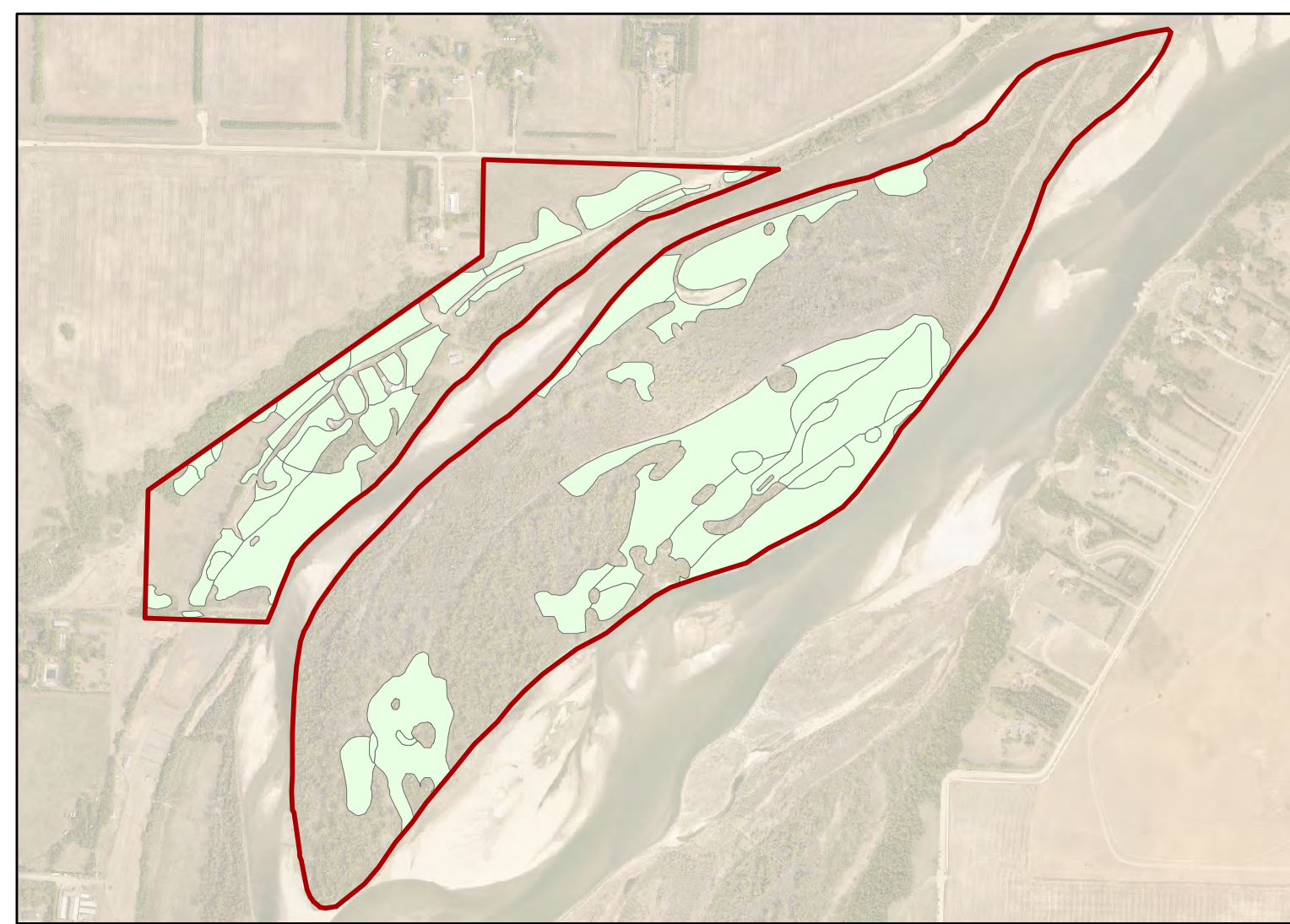
Legend

Vegetation and Wildlife Survey of Maple Grove and Yorath Island (Delaney, 2000)

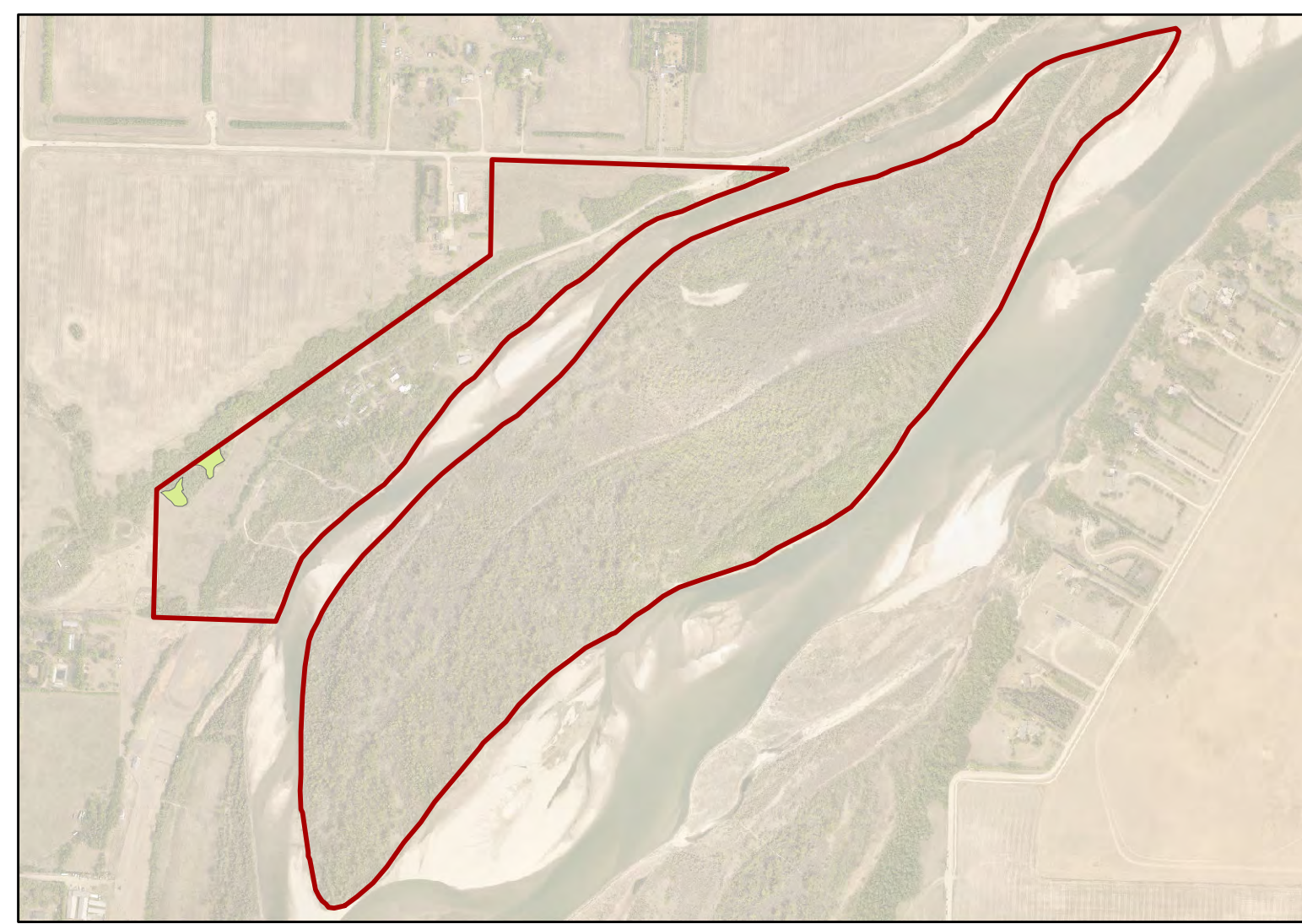
- | | | | | | | |
|------------------------------|---|---|--------------------------------------|-----------------------|---------------------------|-----------------------------------|
| 1 Ash-Upland Shrub | 6 Ash/Maple/Yellow Willow-Floodplain Shrub & Exotic | 11 Balsam Poplar/Ash-Floodplain Shrub | 16 Chokecherry/Saskatoon | 21 Exotic Grass | 26 Sedge Meadow | 31 Snowberry/Upland Shrub |
| 2 Ash-Upland Shrub/Buckthorn | 7 Ash/Upland Shrub-Exotic Grass | 12 Balsam Poplar/Ash-Upland Shrub | 17 Chokecherry/Saskatoon-Exotic Herb | 22 Floodplain Shrub | 27 Snowberry | 32 Upland Shrub |
| 3 Ash/Aspen-Mixed Shrub | 8 Ash/Yellow Willow-Floodplain Shrub | 13 Balsam Poplar/Ash/Maple-No Shrub | 18 Cottonwood-Floodplain Shrub | 23 Pond | 28 Snowberry-Exotic Grass | 33 Yellow Willow/Floodplain Shrub |
| 4 Ash/Maple-No Shrub | 9 Aspen-Upland Shrub | 14 Balsam Poplar/Ash/Maple-Upland Shrub | 19 Cottonwood-No Shrub | 24 River Birch/Willow | 29 Snowberry-Exotic Herb | |
| 5 Ash/Maple-Upland Shrub | 10 Balsam Poplar-Floodplain Shrub | 15 Brome/Alfalfa | 20 Dogwood/Other Shrub | 25 Sandbar Willow | 30 Snowberry/Rose | |

August 23 2022
Projection: NAD 1983 CSRS UTM Zone 13N
Data Sources:
Meewasin Valley Authority, Saskatchewan Geospatial Imagery Collaborative
Disclaimer:
This map is for illustrative purposes only. Do not rely on it as being a precise indicator of land-ownership, feature location, nor as a guide to navigation. This map may contain omissions or errors.
© Meewasin Valley Authority

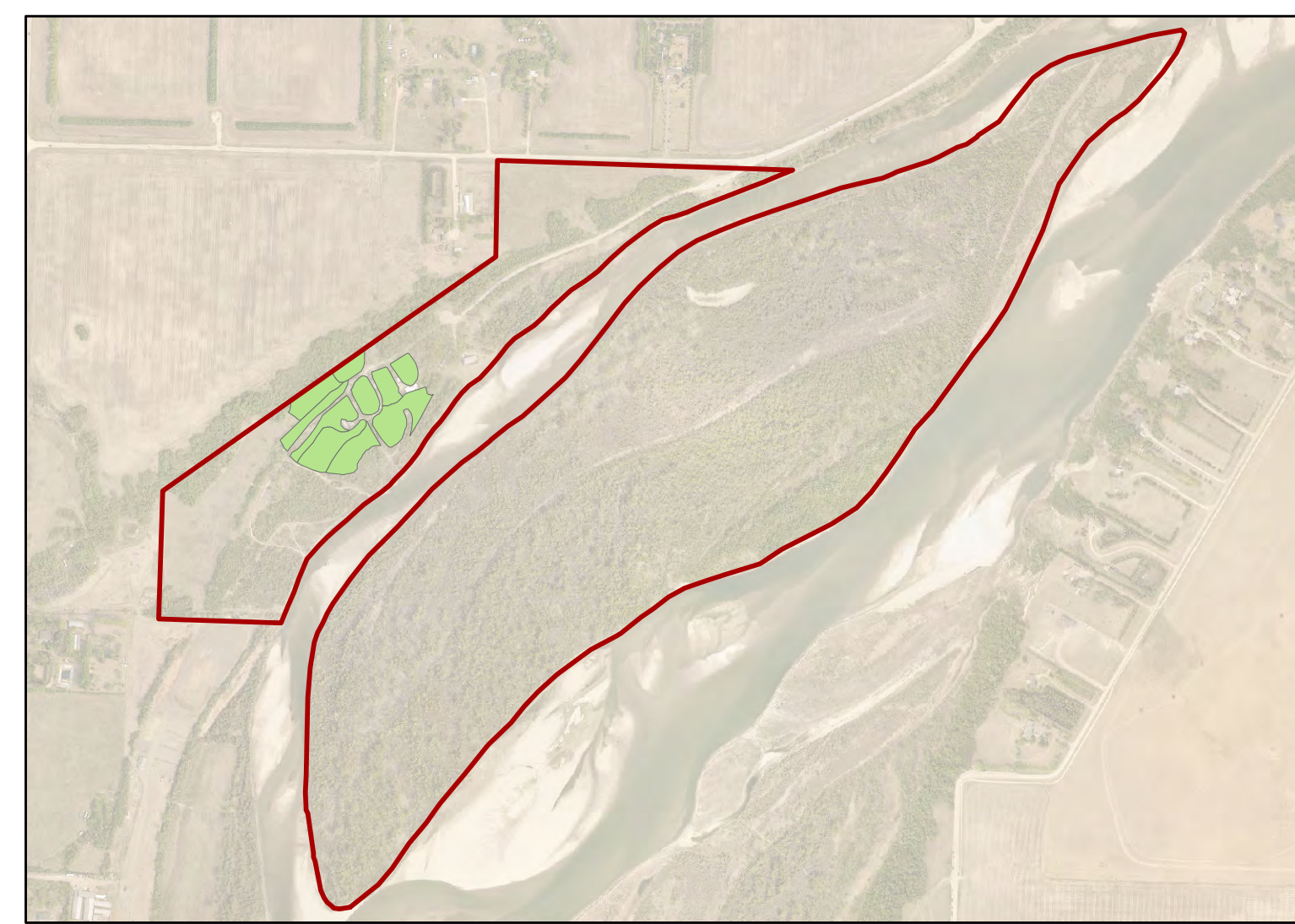




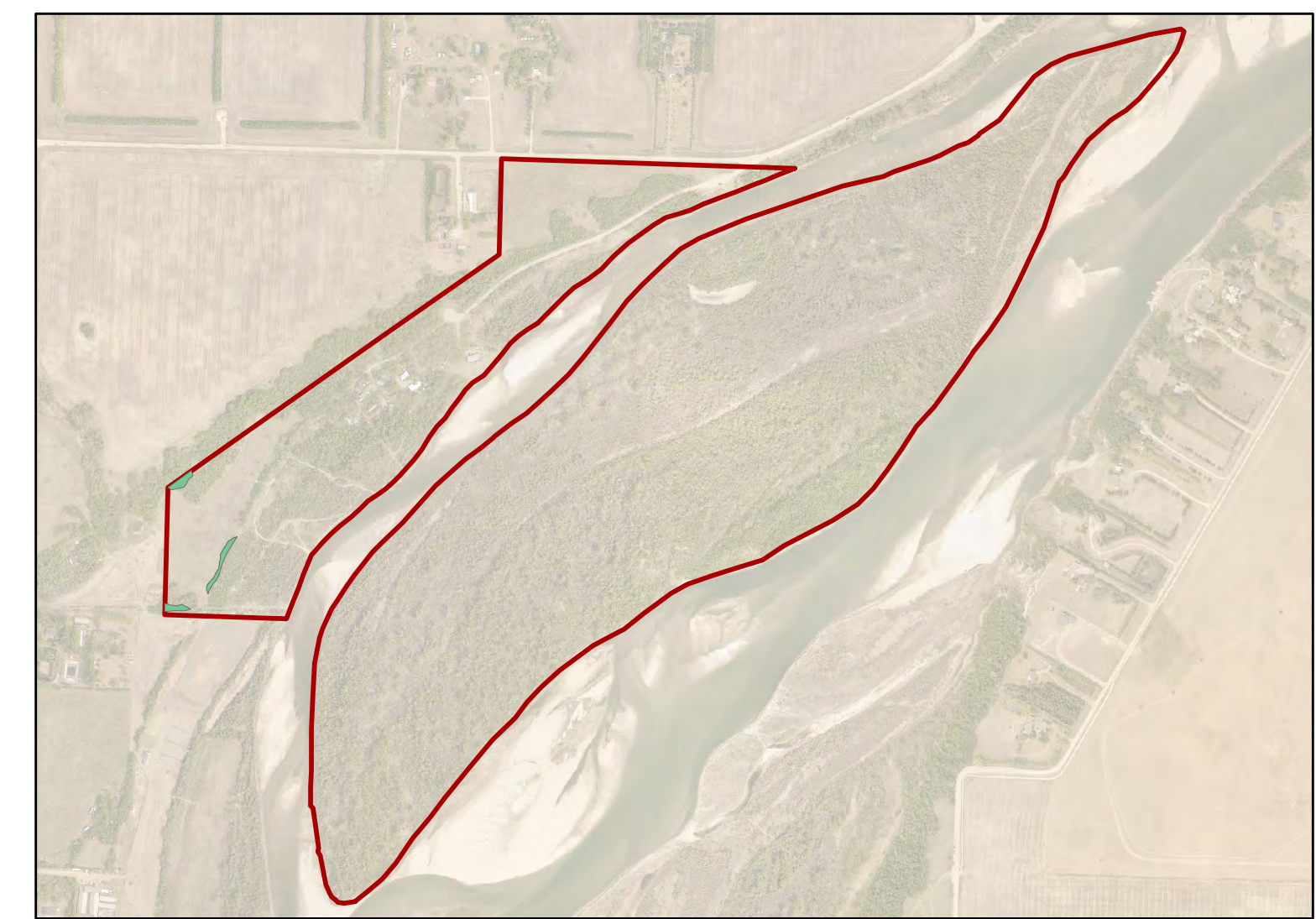
Ash



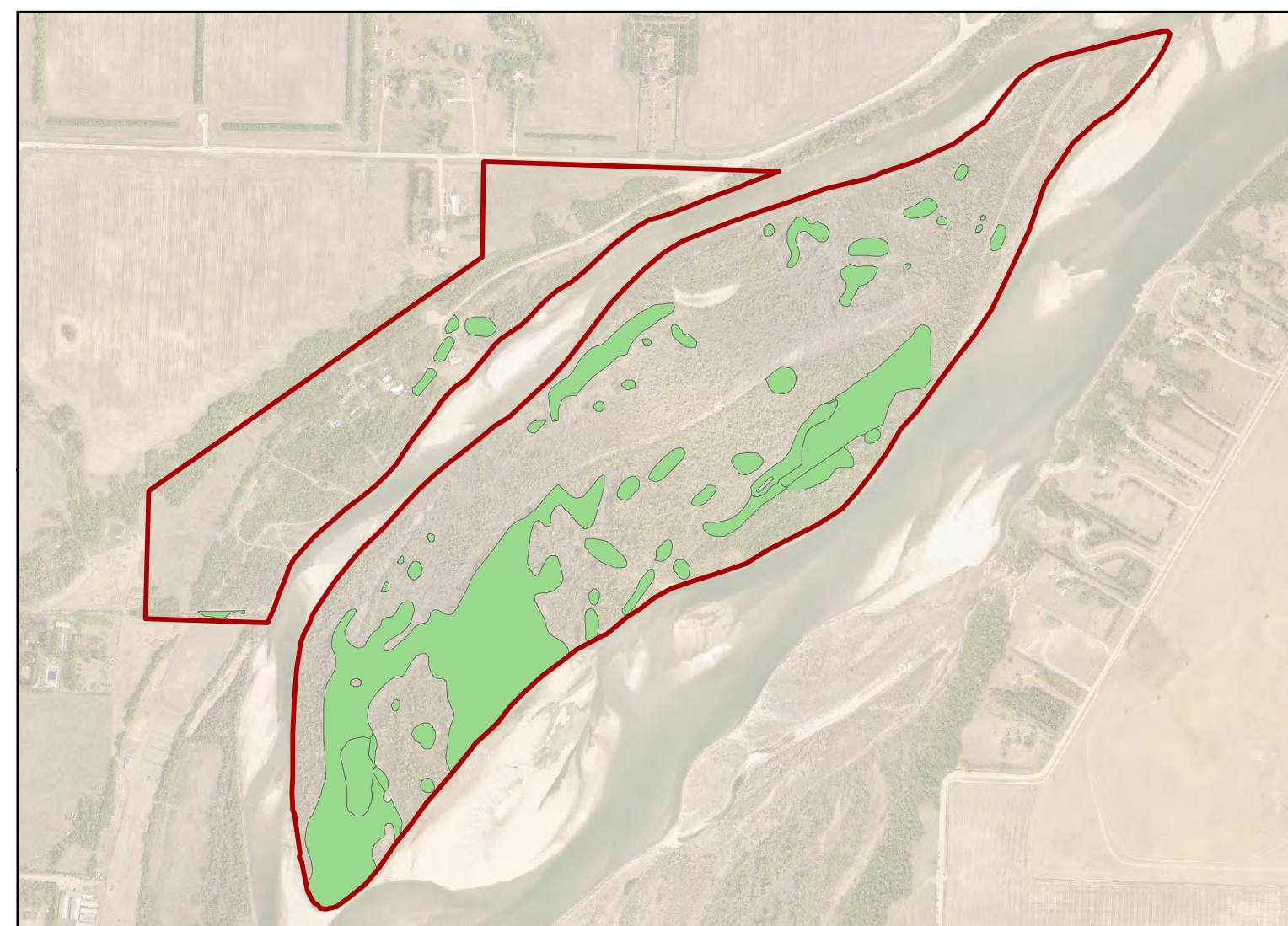
Aspen



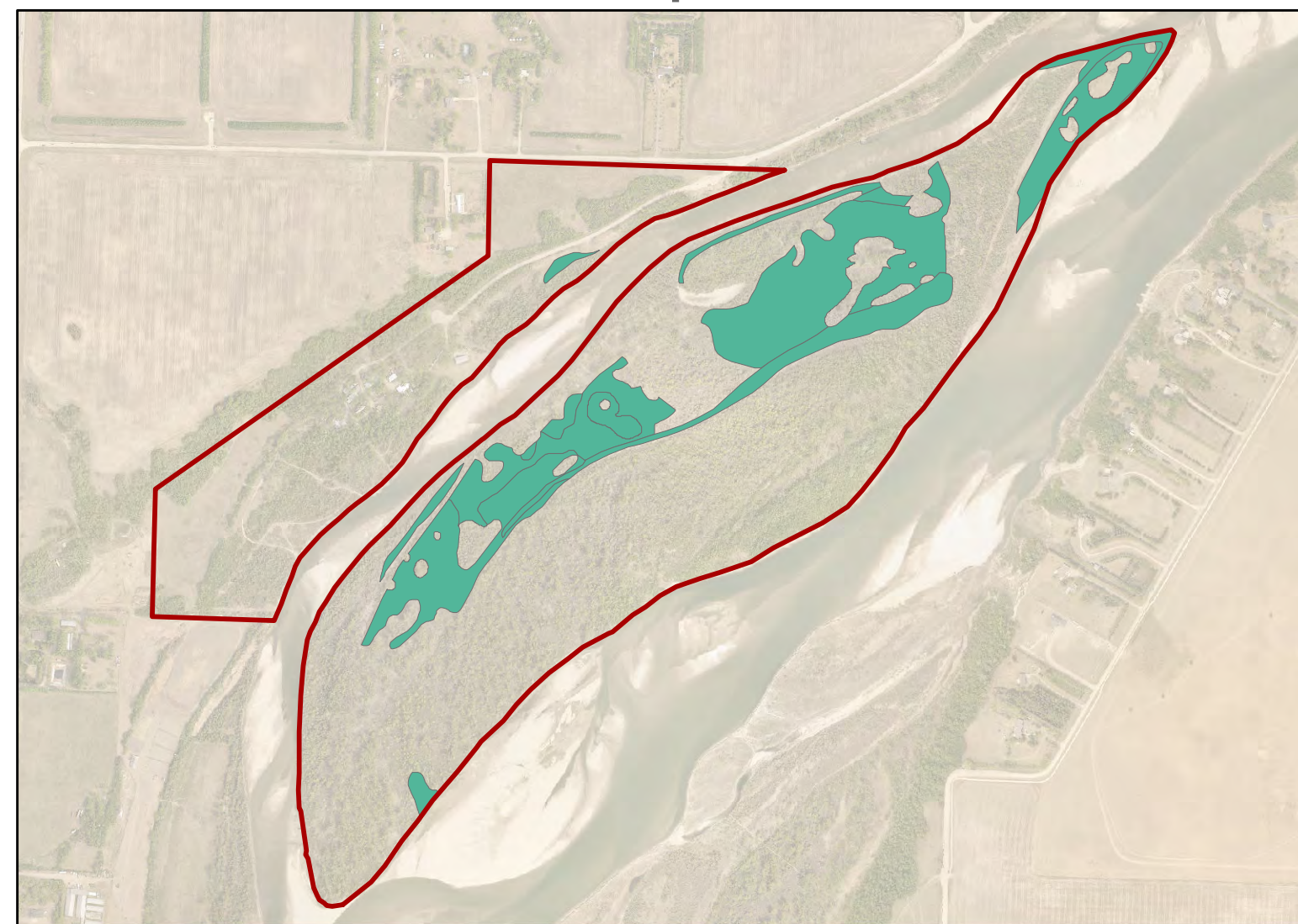
Balsam Poplar



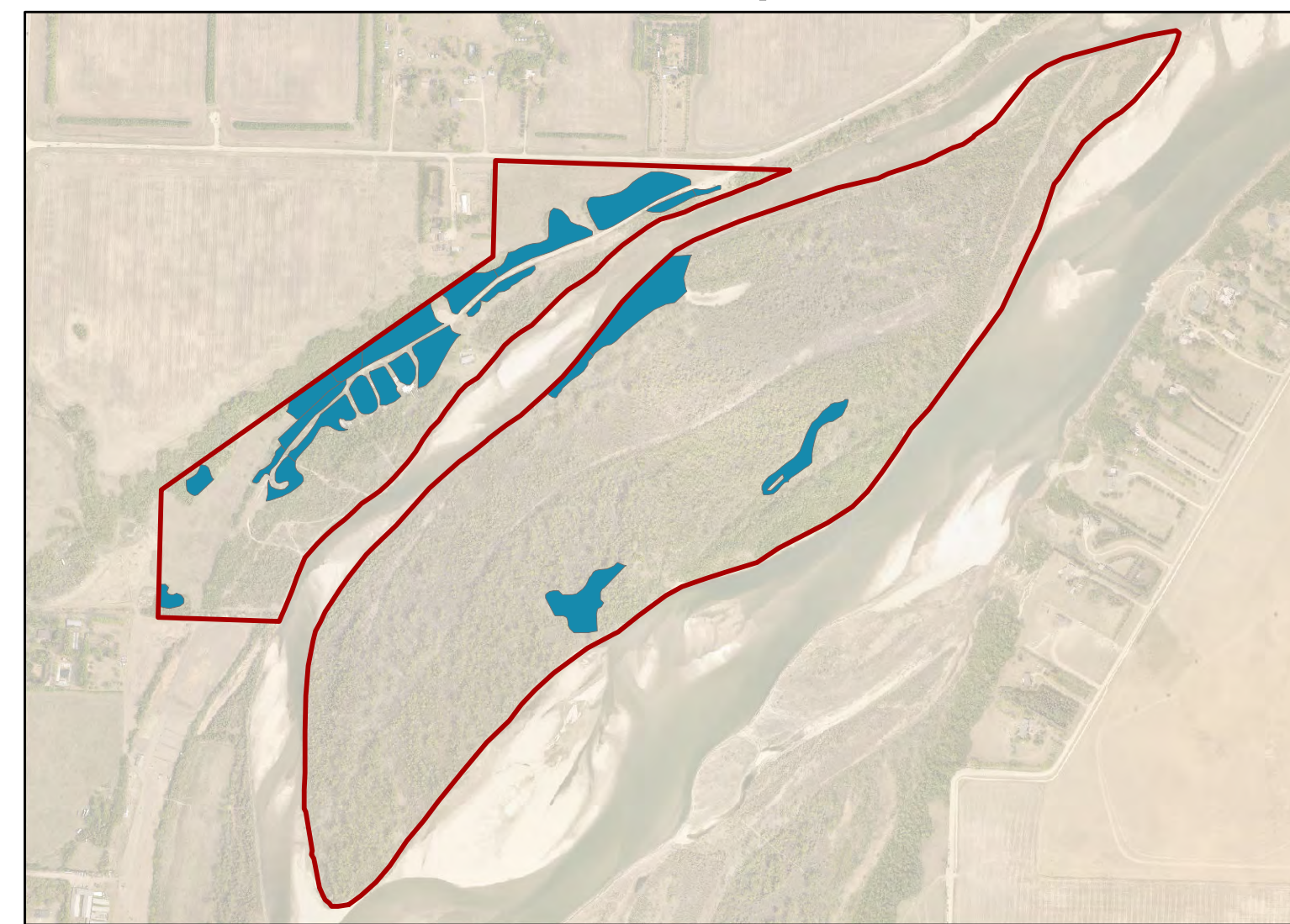
Chokecherry and Saskatoon



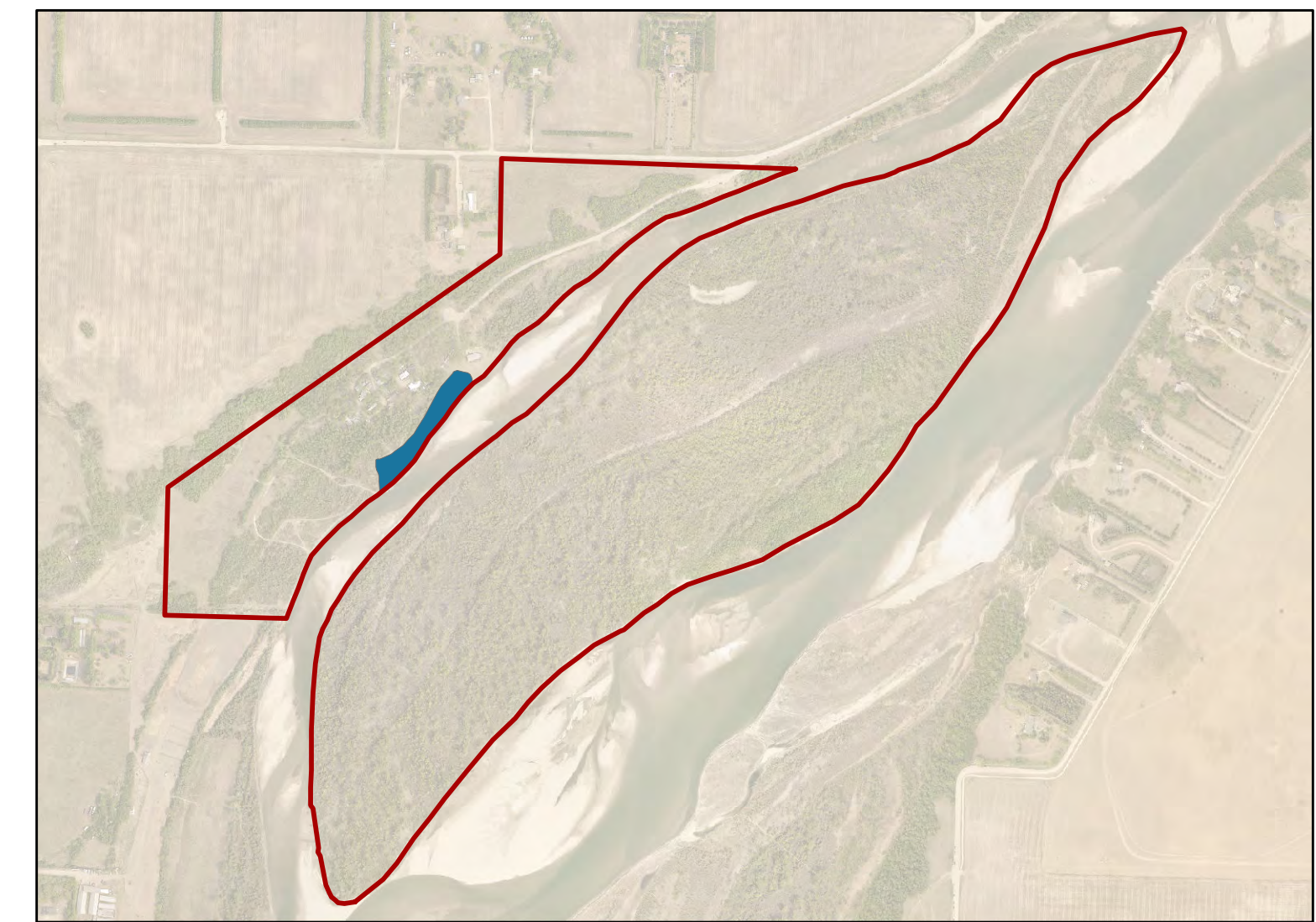
Cottonwood



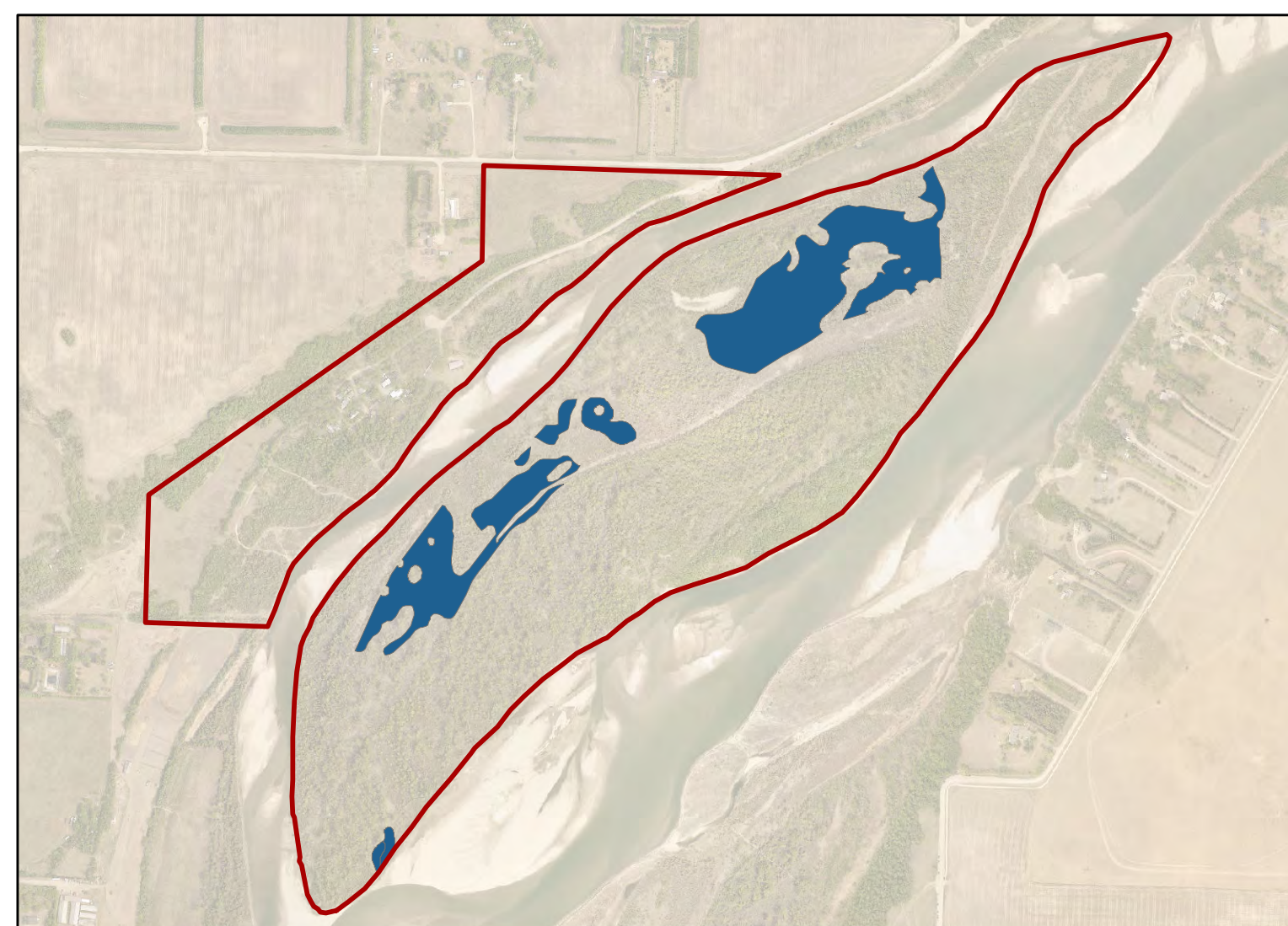
Dogwood



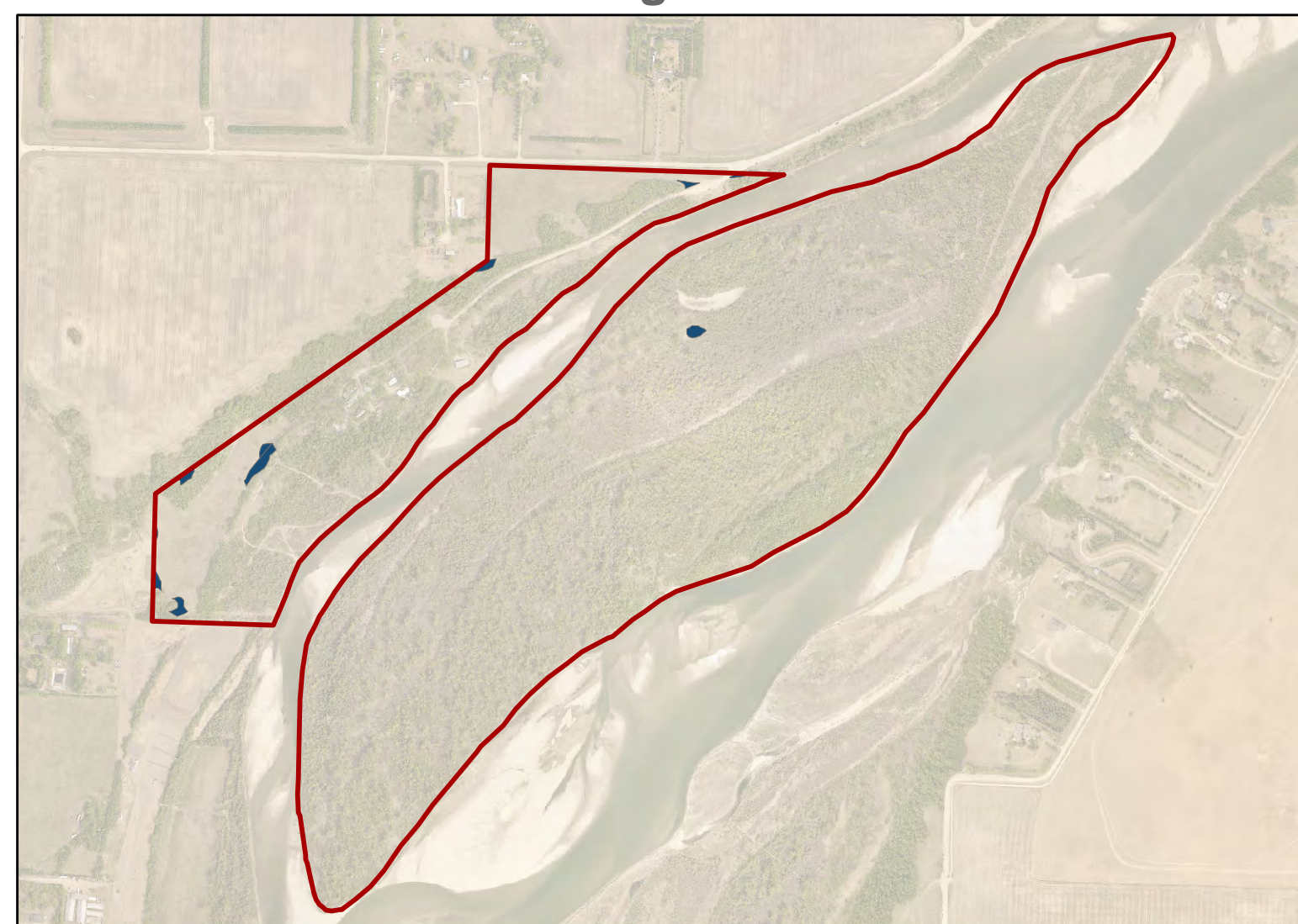
Maple



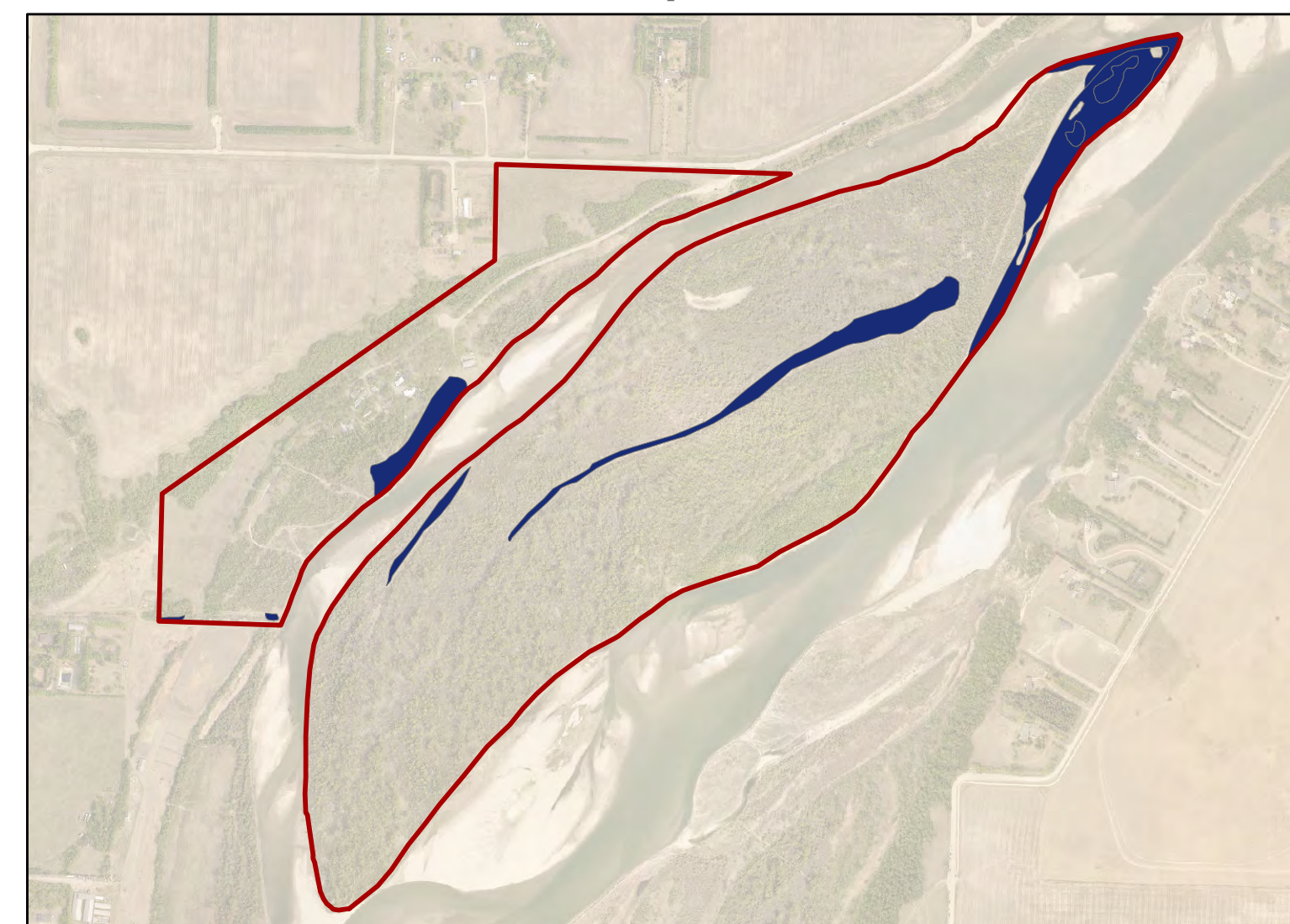
River Birch



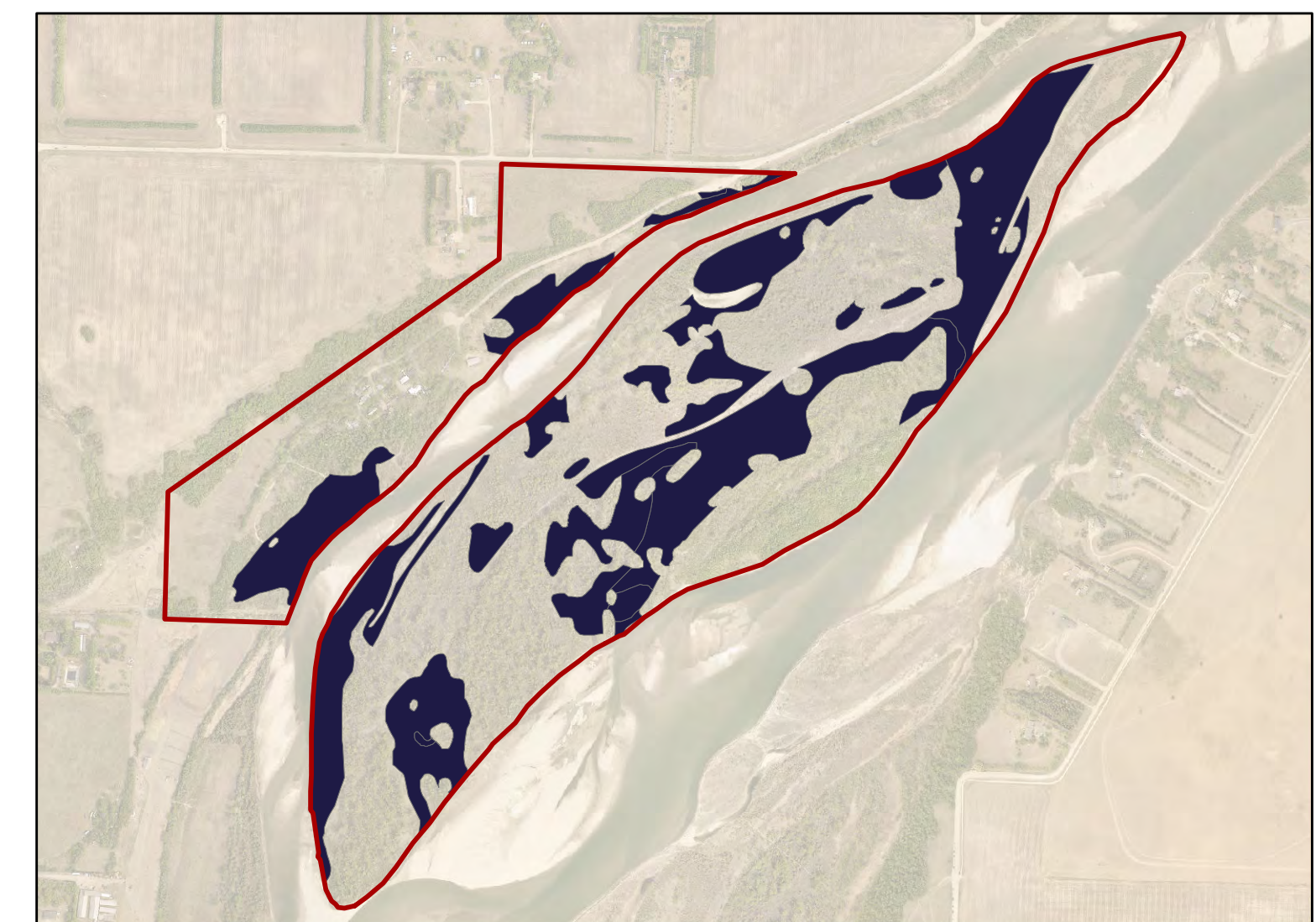
Silverberry



Snowberry



Willow and Sandbar Willow



Yellow Willow

0 0.125 0.25 0.5 Kilometers
Scale 1:11,000

Maple Grove and Yorath Island Vegetation Profile

Legend

Ash	Chokecherry and Saskatoon	Maple	Snowberry	Other Site Boundaries
Aspen	Cottonwood	River Birch	Willow and Sandbar Willow	
Balsam Poplar	Dogwood	Silverberry	Yellow Willow	

September 13 2021
Projection: NAD 1983 CSRS UTM Zone 13N
Data Sources:
Meewasin Valley Authority
Saskatchewan Geospatial Imagery Collaborative

Disclaimer:
This map is for illustrative purposes only. Do not rely on it as being a precise indicator of land-ownership, feature location, nor as a guide to navigation. This map may contain omissions or errors.



0 20 40 80 120 160 Meters
Scale 1:2,000

Maple Grove Infrastructure

Legend Amenities ● Fire Pit ■ Mailbox ◆ Playground Equipment ■ Sign	Boundaries ● Bollard x Fence --- Retaining Wall Buildings — Building	Drainage ○ Culvert — Ditch Monitoring ● Bore Hole	Roadways/Pathways — Edge of Asphalt — Edge of Gravel — Path — Path - Crusher Dust — Path - Mowed	Utilities † Down Guy Anchors ● Gas Box ● Manhole † Power Outlet † Power Pole □ Sign	○ Telephone Box ⊗ Telephone Pedestal ● Water Pipe ● Water Valve — Electrical Box — Sewer	Vegetation ● Tree — Shrub Line — Treeline Other □ Site Boundaries
--	---	---	--	--	---	--

September 7 2021
 Projection: NAD 1983 CSRS UTM Zone 13N
 Data Sources:
 Meewasin Valley Authority
 Saskatchewan Geospatial Imagery Collaborative

Disclaimer:
 This map is for illustrative purposes only. Do not rely on it as being a precise indicator of land-ownership, feature location, nor as a guide to navigation. This map may contain omissions or errors.