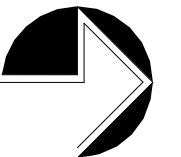


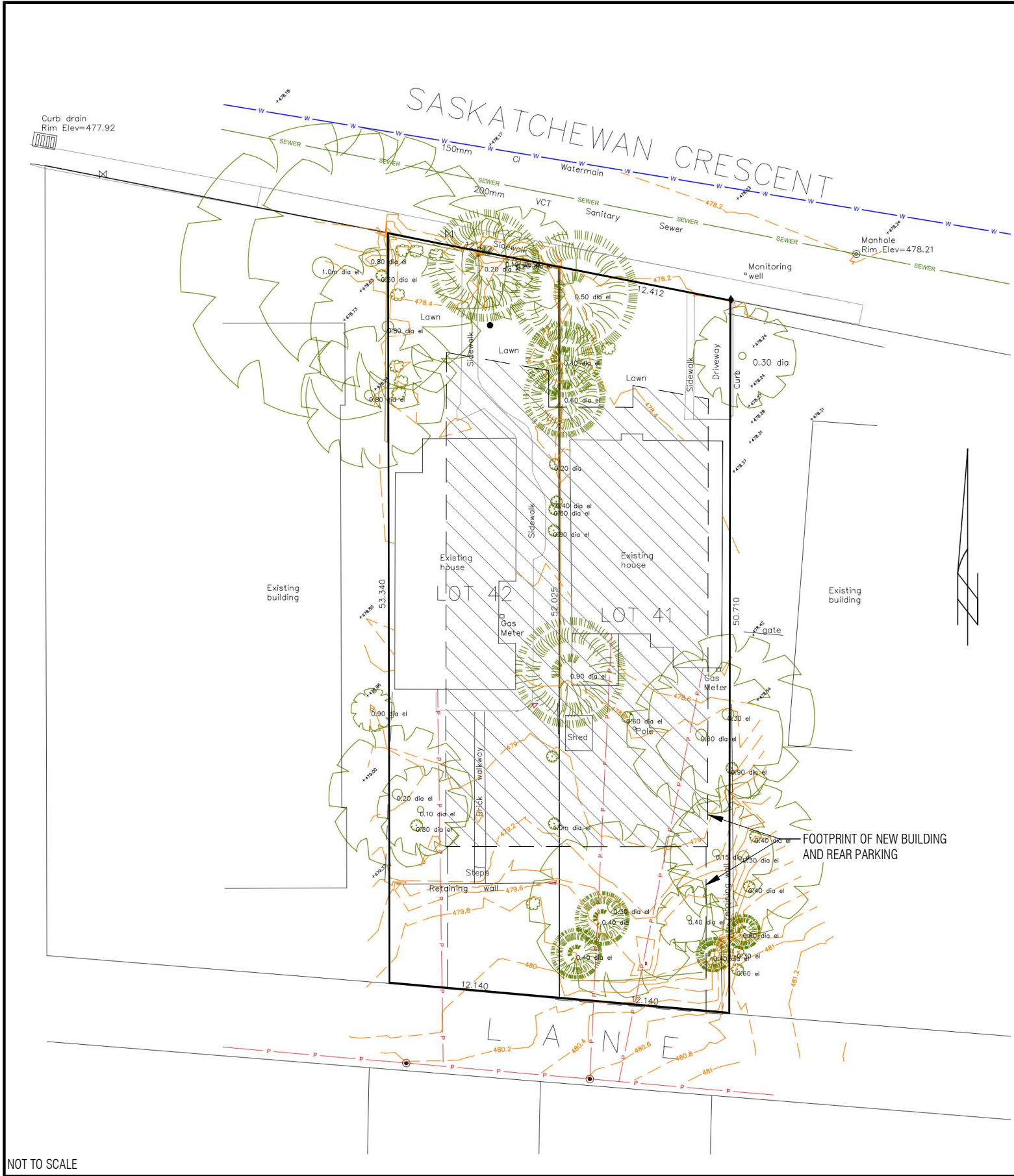
SCALE: 1 : 200

SITE PLAN

212 SASKATCHEWAN CRES E

2021-10-29





PLAN SHOWING

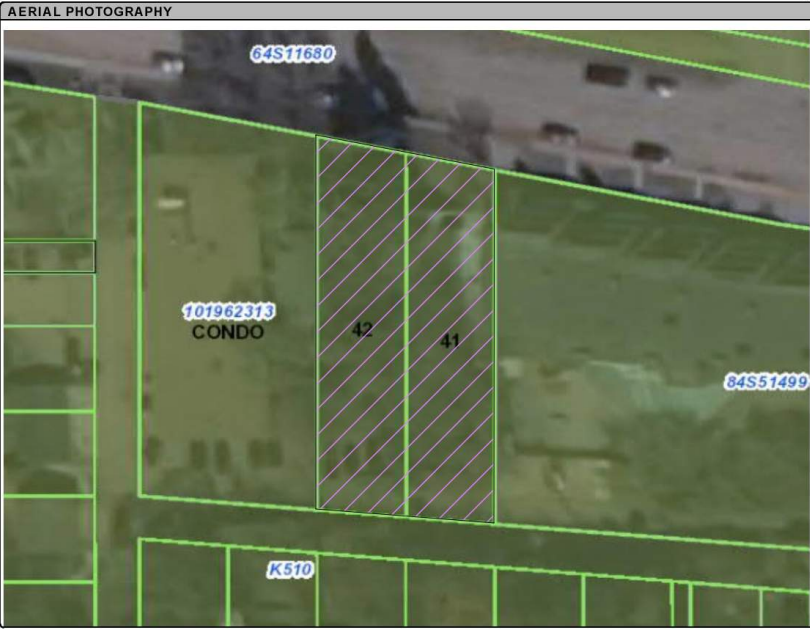
**TOPOGRAPHY ON
212 & 214 SASKATCHEWAN CRESCENT
LOTS 41 & 42, PLAN NO. K510
SASKATOON, SASKATCHEWAN
SCALE 1:200**

LEGEND

Standard Iron Posts found shown thus
Spot Elevations shown thus
Manholes shown thus
Outdoor electrical outlet shown thus
Valves shown thus
Power Poles shown thus
Light Poles shown thus
Coniferous trees shown thus
Deciduous trees shown thus
Shrubs shown thus
Overhead power lines shown thus
Water supply lines shown thus
Sanitary sewer lines shown thus
Fences shown thus
Contour lines shown thus
0.20m concrete retaining wall is shown thus
Spot elevations are frozen on layer ELEVATION.
Tree caliper is frozen on layer TREESIZE.

NOTES


-Date of survey: April 30, 2021
-Measurements are in metres and decimals thereof.
-Elevations based on Static GNSS Observations post processed by Natural Resources Canada (NRCAN) in relation to the Canadian Spatial Reference System (CSRS)
-Underground design information has been obtained from the City of Saskatoon Infrastructure Services Department.



SURVEYORS CERTIFICATION

May 11, 2021

[Signature]

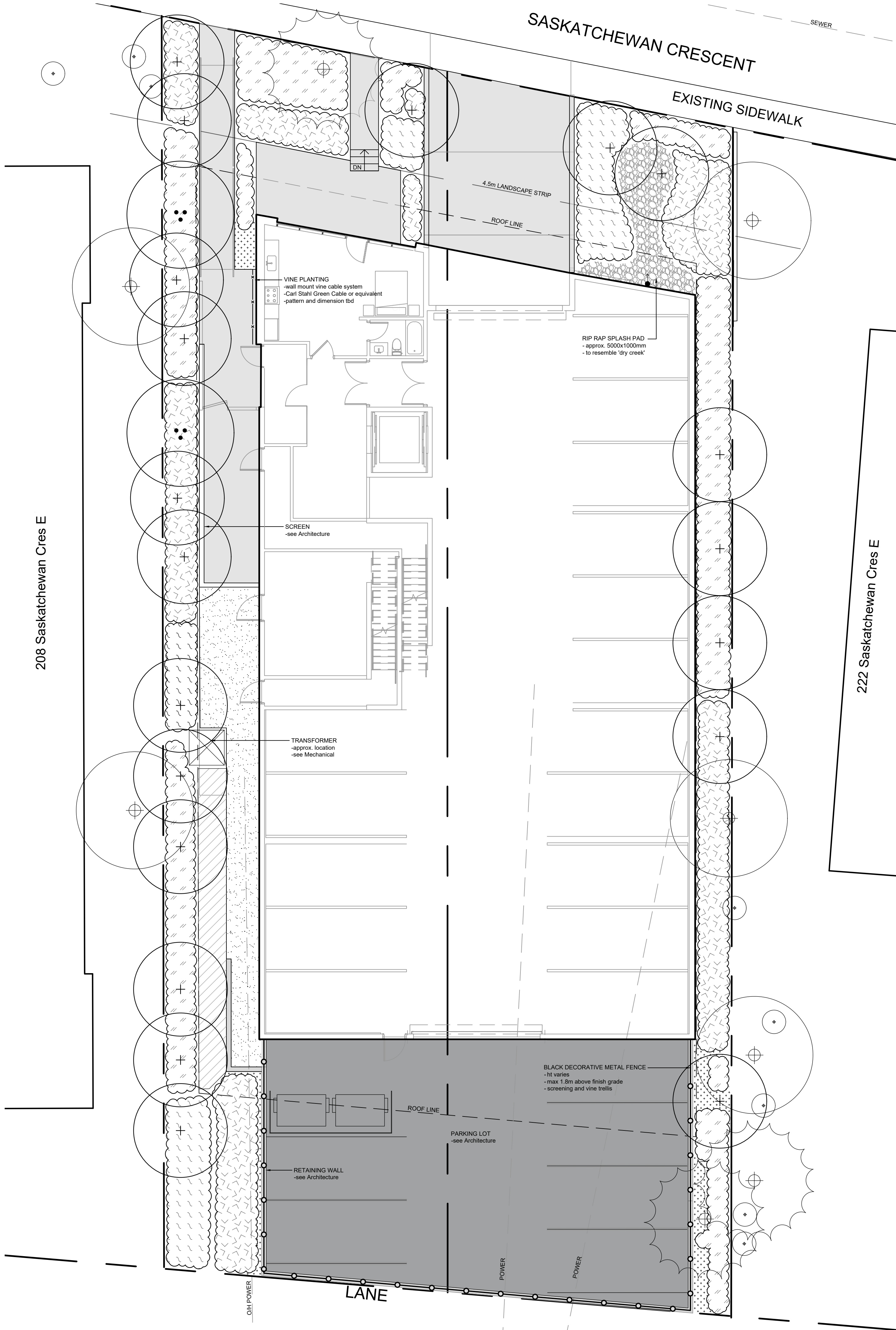
	DATE		JOB No.			
	05/05/2021		SR-0404-20			
	SURVEYED BY: CKJZ		CALC'D BY: CAS		DRAWN BY: CAS	



**KSA
GROUP**
ARCHITECTURE

AERIAL RENDERING
212 SASKATCHEWAN CRES E
2021-10-29





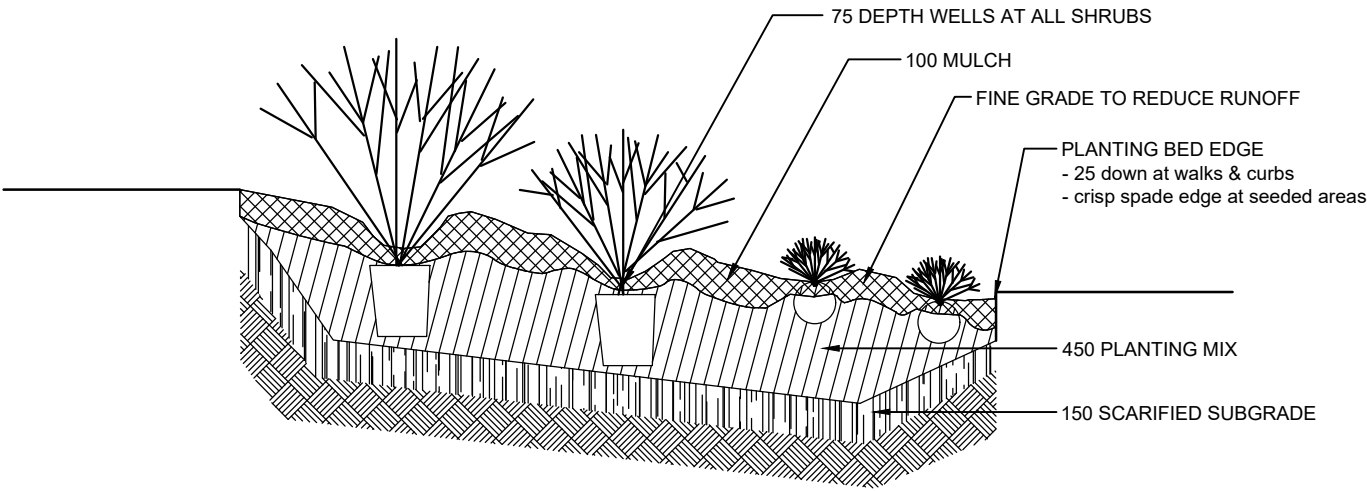
LEGEND

EXISTING

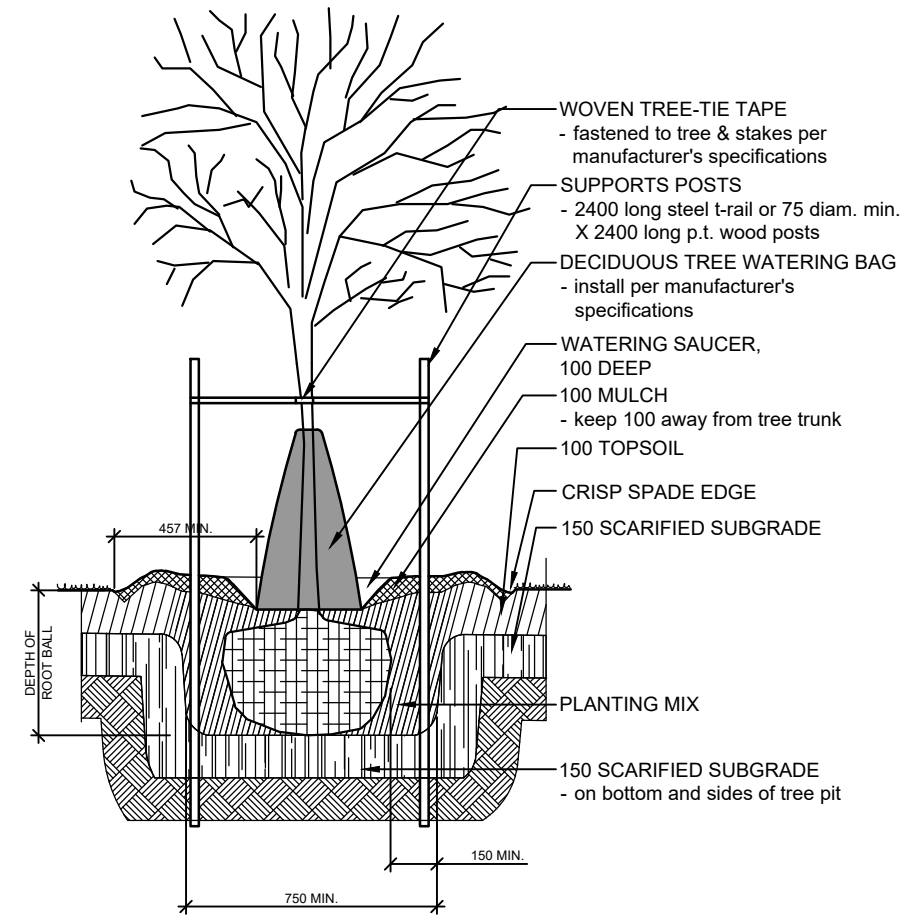
- PROPERTY LINE
- EXISTING UTILITIES - as noted
- EXISTING TREES - retain; do not damage

PROPOSED

- PROPOSED TREES - species tbd - see plant list for proposed species
- ASPHALT - see Architecture
- CONCRETE - see Architecture
- RETAINING WALL - see Architecture
- CRUSHER DUST
- MULCH ONLY
- RIP RAP SPLASH PAD
- LARGE SHRUBS - deciduous; complete w/ mulch - see plant list for proposed species; tbd
- MEDIUM SHRUBS / PERENNIALS - deciduous; complete w/ mulch - see plant list for proposed species; tbd
- SMALL SHRUBS / PERENNIALS - deciduous; complete w/ mulch - see plant list for proposed species; tbd
- VINES - see plant list for proposed species; tbd
- BLACK DECORATIVE FENCE



3 PLANTING BED - (mm)
N.T.S.



7 STAKING DETAIL - TREE-TIE TAPE & WATERING BAG - (mm)
N.T.S.

PLANT LIST		
TREES		SIZE
TREMBLING ASPEN	<i>Populus Tremuloides</i>	25 cal min.
TREMBLING ASPEN CLUMP	<i>Populus Tremuloides "Clump"</i>	25 cal min.
PINCHERRY	<i>Prunus Pennsylvanica</i>	1500 ht
MOUNTAIN ALDER	<i>Alnus Incana</i>	1500 ht
AMERICAN PLUM	<i>Prunus Americana</i>	1500 ht

SHRUBS		
SASKATOON (Lg)	<i>Amelanchier Anifolia</i>	400 ht min
REDOISER DOGWOOD (Lg)	<i>Cornus Sericea</i>	400 ht min
HIGHBUSH CRANBERRY (Lg)	<i>Viburnum Trilobum</i>	400 ht min
WILD BLACK CURRANT (Md)	<i>Ribes Americana</i>	300 ht min
PRICKLY ROSE (Md)	<i>Rosa Acicularis</i>	300 ht min
BUSH HONEYSUCKLE (Sm)	<i>Diervilla Lonicera</i>	300 ht min

PERENNIALS		
NORTHERN BEDSTRAW (Md)	<i>Galium Boreale</i>	10cm pot
FALSE SOLOMAN'S SEAL (Md)	<i>Maianthemum Racemosum</i>	10cm pot
CANADA ANEMONE (Sm)	<i>Anemone Canadensis</i>	10cm pot
VIOLET (Sm)	<i>Viola Canadensis</i>	10cm pot
BUNCHBERRY (Sm)	<i>Cornus Canadensis</i>	#1 pot

VINES		
VIRGINIA CREEPER	<i>Parthenocissus Quinquefolia</i>	#1 pot
VIRGIN'S BOWER	<i>Clematis Virginiana</i>	#1 pot
RIVERBANK GRAPE	<i>Vitus Riparia</i>	#2 pot

General Notes

Revision Date

PRELIMINARY
NOT FOR CONSTRUCTION

CROSBY
HANNA
& ASSOCIATES

407C 1st Ave. North
Saskatoon, SK S7K 1X5
www.crosbyhanna.ca

T (306) 665-3441

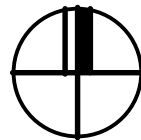
LANDSCAPE ARCHITECTURE
COMMUNITY PLANNING

212 SASKATCHEWAN
CRESCENT

Project Title

LANDSCAPE PLAN

Drawing Title



Drawn NM Checked WH

Scale 1:100 Date 2021/10/22

Project No. 21061 Drawing PL-1