

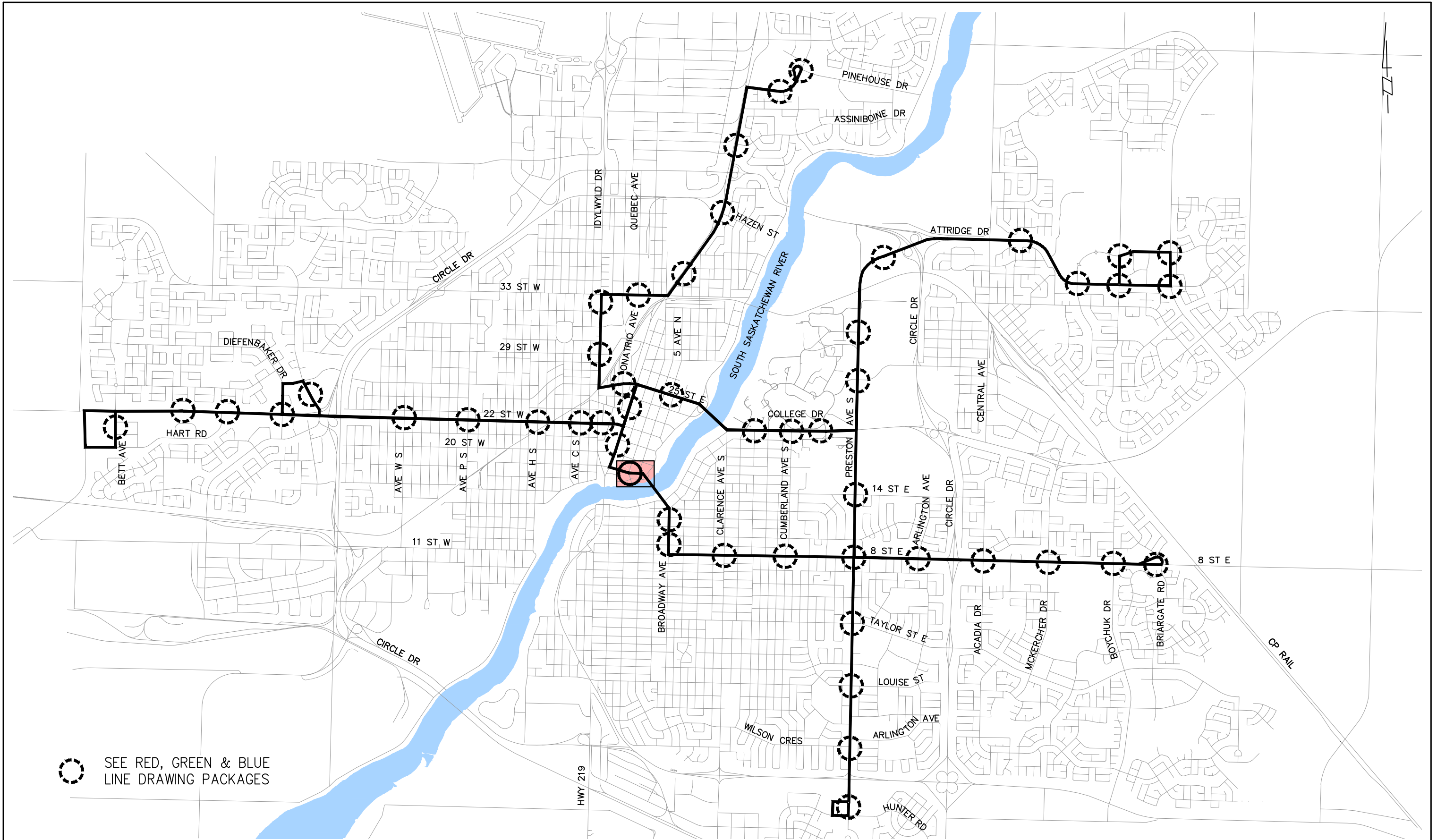
CITY OF SASKATOON

BUS RAPID TRANSIT PROJECT **BLUE LINE** - 19TH STREET

DETAIL DESIGN

RE-ISSUED FOR REVIEW

MARCH 25, 2020



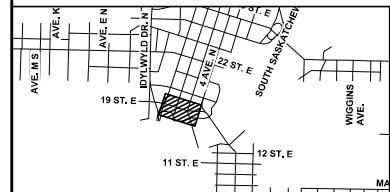
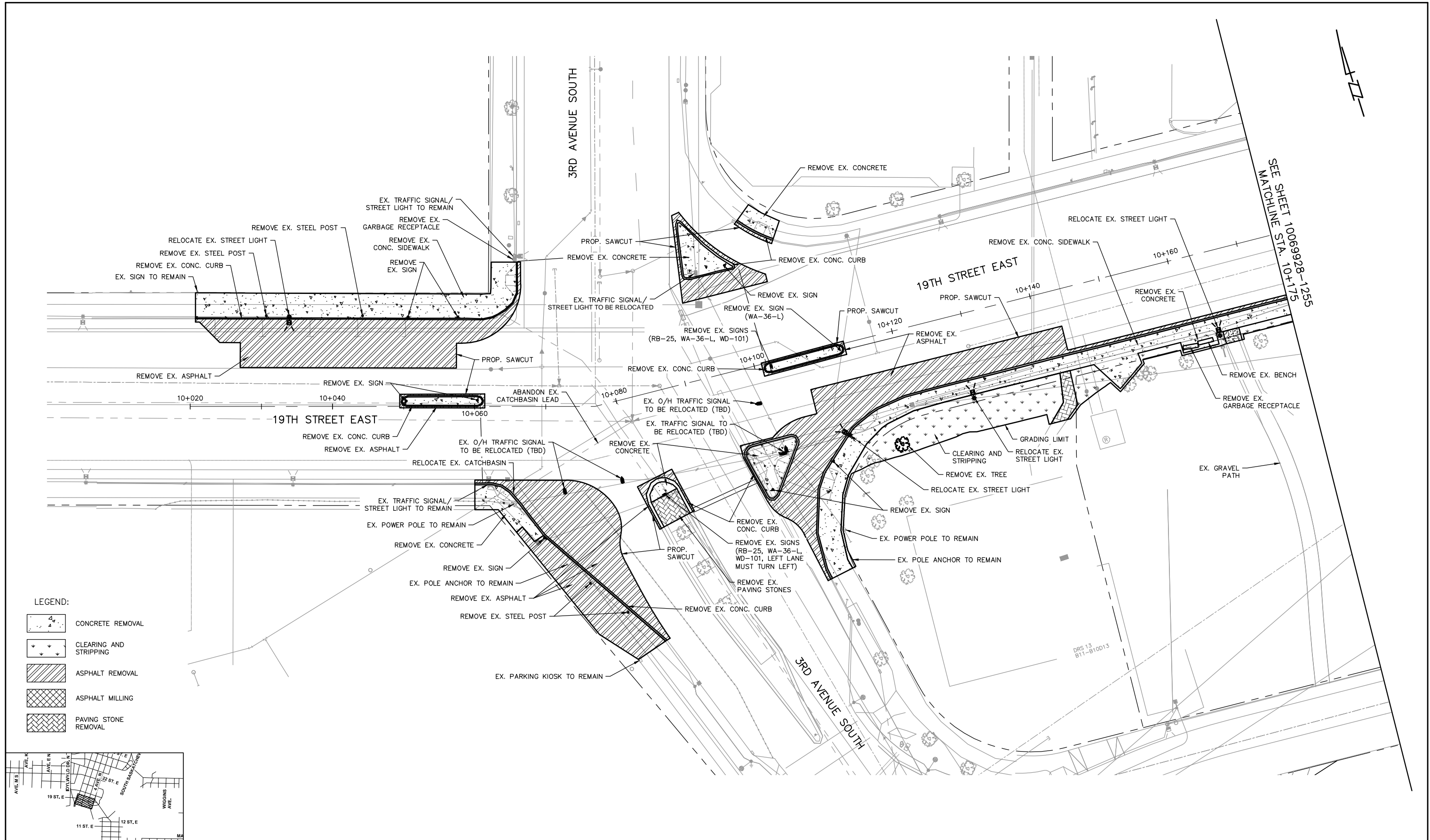
11			
10			
9			
8			
7			
6			
5			
4			
3			
2	RE-ISSUED FOR REVIEW	2020/03/25	IM
1	ISSUED FOR REVIEW	2020/01/30	IM
	PLAN DESCRIPTION/REVISION	DATE	BY

CHECKED BY:		CHECKED BY:	
<div></div>		<div></div>	
DATE		DATE	
DRAWN BY		DATE	

City of Saskatoon
Transportation & Utilities Department

BUS RAPID TRANSIT PROJECT	
DETAIL DESIGN	
4TH AVENUE / 19TH STREET INTERSECTION	
GENERAL DRAWING	
KEY PLAN	

CHIEF ENGINEER	
SCALES :	DATE
HOR. 1:50,000	
VERT.	
SHEET NO.	PLAN NO.
	10069928-1252



11				
10				
9				
8				
7				
6				
5				
4				
3				
2	RE-ISSUED FOR REVIEW	2020/03/25	IM	
1	ISSUED FOR REVIEW	2020/01/30	IM	
	PLAN DESCRIPTION/REVISION	DATE	BY	SEAL

	CHECKED BY:	CHECKED BY:
	DATE	DATE
	DRAWN BY	DATE

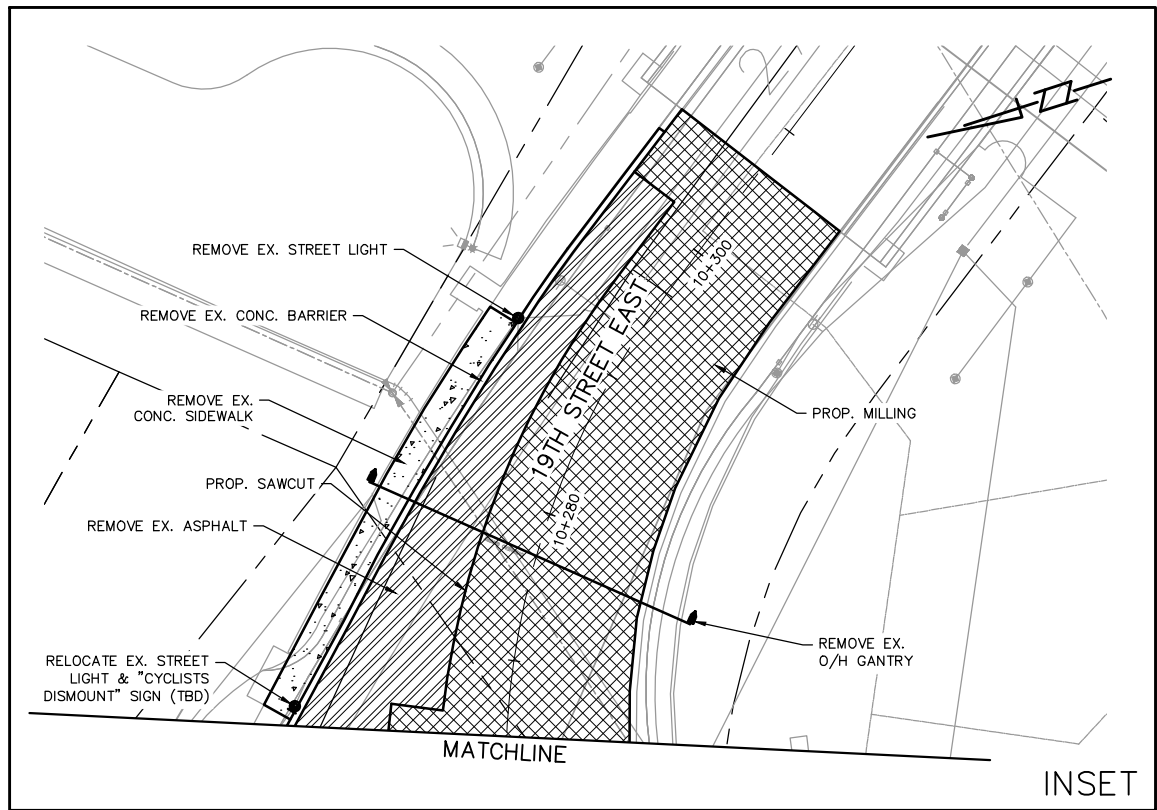
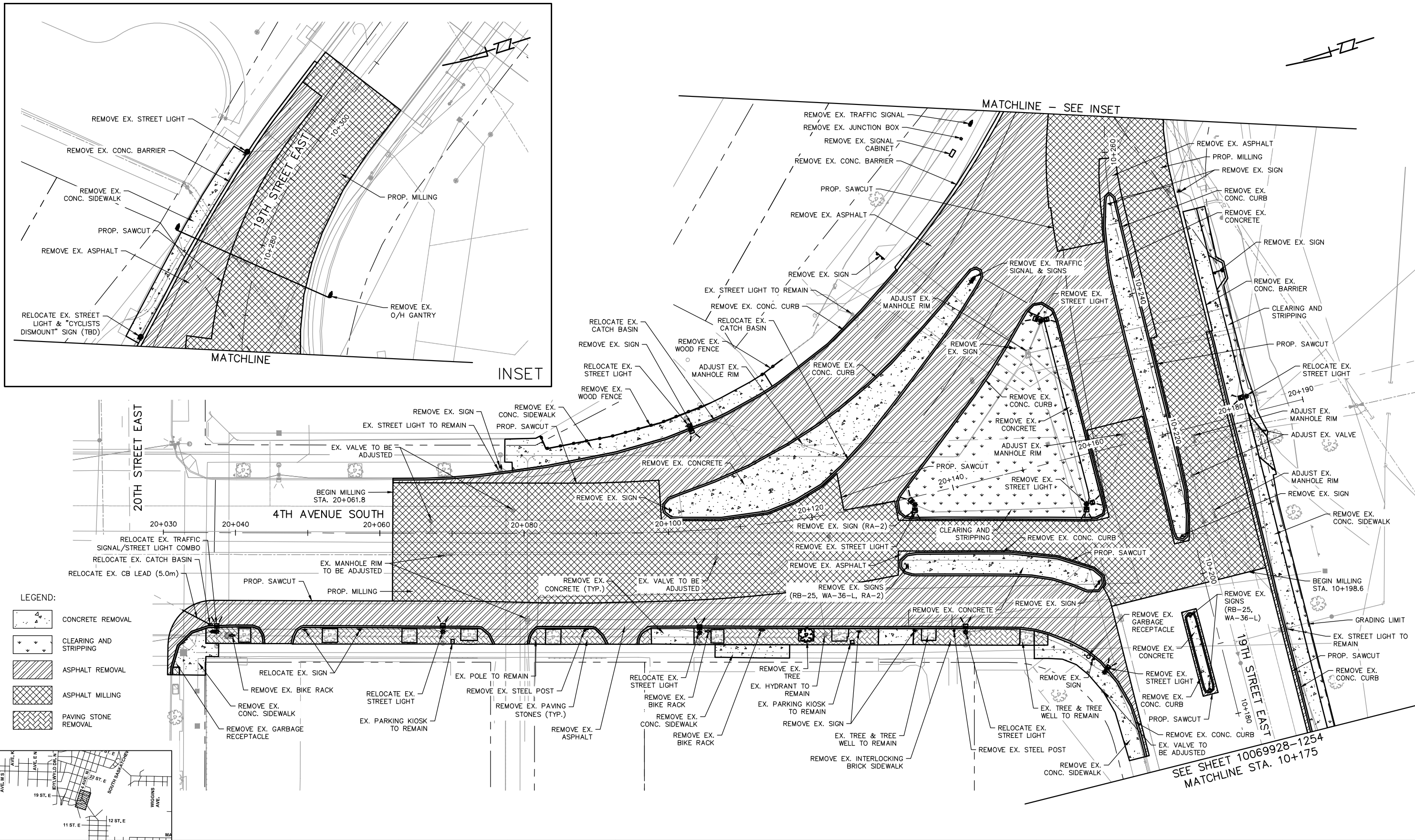




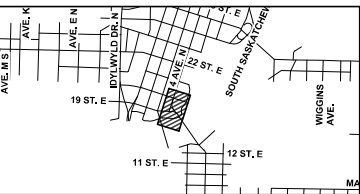
**City of
Saskatoon**
Transportation & Utilities Department

BUS RAPID TRANSIT PROJECT	
DETAIL DESIGN	
4TH AVENUE / 19TH STREET INTERSECTION	
REMOVALS PLAN	
19TH STREET STA. 10+020 TO STA. 10+175	

CHIEF ENGINEER	
SCALES:	DATE
HOR. 1:500	
VERT.	
SHEET NO.	PLAN NO.
	10069928-1254



- LEGEND:
- CONCRETE REMOVAL
 - CLEARING AND STRIPPING
 - ASPHALT REMOVAL
 - ASPHALT MILLING
 - PAVING STONE REMOVAL



11				
10				
9				
8				
7				
6				
5				
4				
3				
2	RE-ISSUED FOR REVIEW	2020/03/25	IM	
1	ISSUED FOR REVIEW	2020/01/30	IM	
	PLAN DESCRIPTION/REVISION	DATE	BY	SEAL

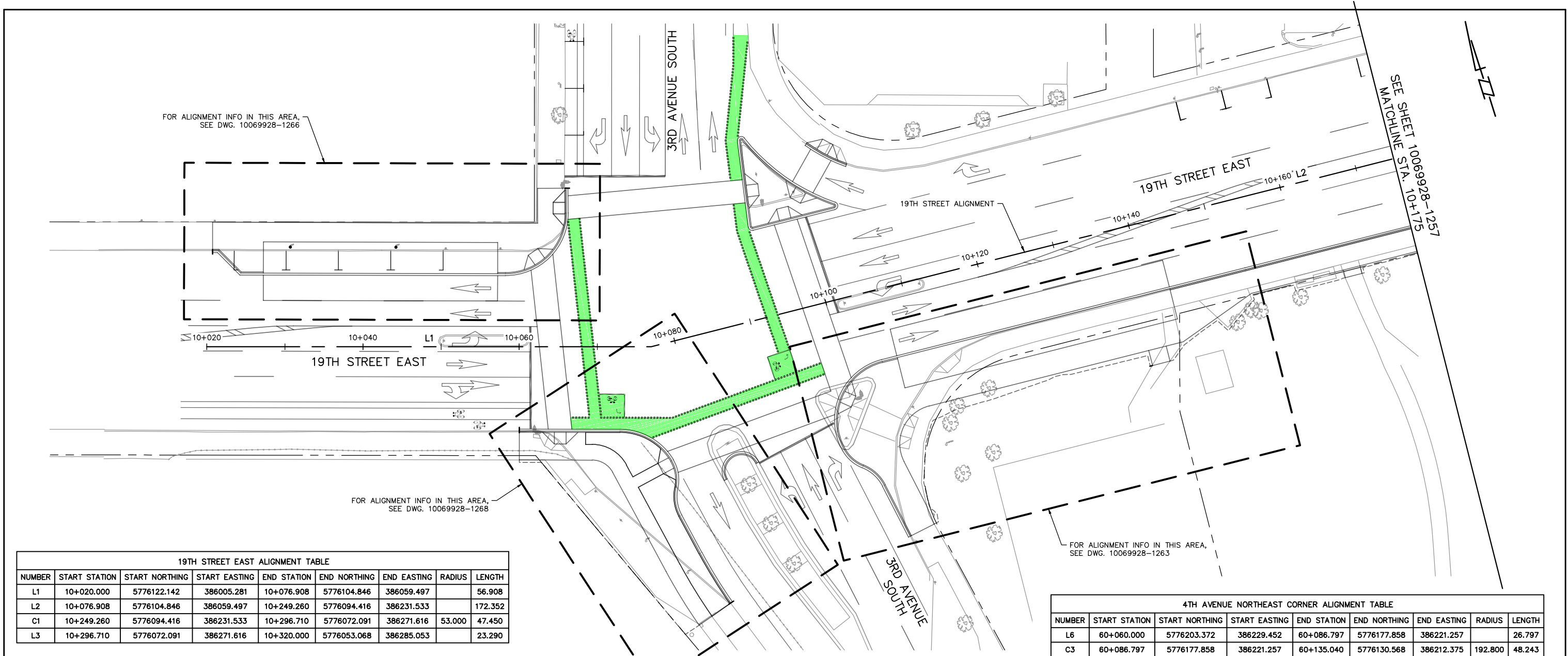
CHECKED BY:	CHECKED BY:
DATE	DATE
DRAWN BY:	DATE



City of Saskatoon
Transportation & Utilities Department

BUS RAPID TRANSIT PROJECT
DETAIL DESIGN
4TH AVENUE / 19TH STREET INTERSECTION
REMOVALS PLAN
19TH STREET STA. 10+175 TO STA. 10+300 & 4TH AVENUE STA. 20+030 TO STA. 20+190

CHIEF ENGINEER	DATE
SCALES:	
HOR. 1:500	
VERT.	
SHEET NO.	PLAN NO.
	10069928-1255



19TH STREET EAST ALIGNMENT TABLE								
NUMBER	START STATION	START NORTHING	START EASTING	END STATION	END NORTHING	END EASTING	RADIUS	LENGTH
L1	10+020.000	5776122.142	386005.281	10+076.908	5776104.846	386059.497		56.908
L2	10+076.908	5776104.846	386059.497	10+249.260	5776094.416	386231.533		172.352
C1	10+249.260	5776094.416	386231.533	10+296.710	5776072.091	386271.616	53.000	47.450
L3	10+296.710	5776072.091	386271.616	10+320.000	5776053.068	386285.053		23.290

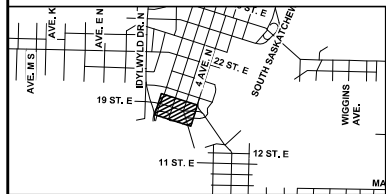
4TH AVENUE ALIGNMENT TABLE								
NUMBER	START STATION	START NORTHING	START EASTING	END STATION	END NORTHING	END EASTING	RADIUS	LENGTH
L4	20+030.000	5776232.996	386231.404	20+082.636	5776182.882	386215.309		52.636
S1	20+082.636	5776182.882	386215.309	20+099.636	5776166.618	386210.366	INFINITY	17.000
C2	20+099.636	5776166.618	386210.366	20+127.676	5776139.088	386205.195	180.000	28.040
S2	20+127.676	5776139.088	386205.195	20+144.676	5776122.139	386203.900	180.000	17.000
L5	20+144.676	5776122.139	386203.900	20+190.000	5776076.898	386201.157		45.324

19TH STREET MEDIAN ISLAND ALIGNMENT TABLE									
NUMBER	START STATION	START NORTHING	START EASTING	END STATION	END NORTHING	END EASTING	RADIUS	LENGTH	
C9	15+000.000	5776095.126	386215.175	15+007.441	5776093.320	386222.349	20.000	7.441	
L16	15+007.441	5776093.320	386222.349	15+019.277	5776092.604	386234.164		11.836	
C10	15+019.277	5776092.604	386234.164	15+025.046	5776091.924	386239.889	50.000	5.769	
C11	15+025.046	5776091.924	386239.889	15+028.043	5776093.858	386240.378	1.000	2.998	
C12	15+028.043	5776093.858	386240.378	15+041.013	5776096.303	386227.679	50.000	12.969	
L17	15+041.013	5776096.303	386227.679	15+053.059	5776097.032	386215.654		12.047	
C13	15+053.059	5776097.032	386215.654	15+055.829	5776095.126	386215.175	1.000	2.770	

4TH AVENUE MEDIAN ISLAND ALIGNMENT TABLE									
NUMBER	START STATION	START NORTHING	START EASTING	END STATION	END NORTHING	END EASTING	RADIUS	LENGTH	
L18	22+000.000	5776126.165	386203.392	22+011.638	5776114.549	386202.688		11.638	
C14	22+011.638	5776114.549	386202.688	22+013.994	5776114.458	386204.185	0.750	2.356	
L19	22+013.994	5776114.458	386204.185	22+025.633	5776126.075	386204.890		11.638	
C15	22+025.633	5776126.075	386204.890	22+027.989	5776126.165	386203.392	0.750	2.356	

4TH AVENUE NORTHEAST CORNER ALIGNMENT TABLE									
NUMBER	START STATION	START NORTHING	START EASTING	END STATION	END NORTHING	END EASTING	RADIUS	LENGTH	
L6	60+060.000	5776203.372	386229.452	60+086.797	5776177.858	386221.257		26.797	
C3	60+086.797	5776177.858	386221.257	60+135.040	5776130.568	386212.375	192.800	48.243	
L7	60+135.040	5776130.568	386212.375	60+153.117	5776112.525	386211.281		18.076	
C4	60+153.117	5776112.525	386211.281	60+165.683	5776104.055	386218.783	8.000	12.566	
L8	60+165.683	5776104.055	386218.783	60+175.533	5776103.459	386228.615		9.850	
C5	60+175.533	5776103.459	386228.615	60+225.500	5776081.810	386272.172	62.347	49.967	

4TH AVENUE NORTHWEST CORNER ALIGNMENT TABLE									
NUMBER	START STATION	START NORTHING	START EASTING	END STATION	END NORTHING	END EASTING	RADIUS	LENGTH	
L9	70+087.900	5776175.278	386196.760	70+090.664	5776174.451	386199.397		2.763	
C6	70+090.664	5776174.451	386199.397	70+095.329	5776170.736	386201.376	3.000	4.666	
C7	70+095.329	5776170.736	386201.376	70+138.483	5776128.328	386193.906	189.600	43.154	
L10	70+138.483	5776128.328	386193.906	70+143.906	5776122.915	386193.578		5.423	
L11	70+143.906	5776122.915	386193.578	70+149.273	5776117.979	386195.683		5.367	
L12	70+149.273	5776117.979	386195.683	70+151.273	5776115.982	386195.562		2.000	
C8	70+151.273	5776115.982	386195.562	70+163.839	5776108.481	386187.092	8.000	12.566	
L13	70+163.839	5776108.481	386187.092	70+165.839	5776108.602	386185.096		2.000	
L14	70+165.839	5776108.602	386185.096	70+170.870	5776111.120	386180.741		5.031	
L15	70+170.870	5776111.120	386180.741	70+192.000	5776112.399	386159.649		21.130	



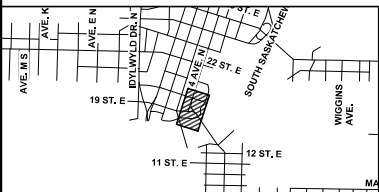
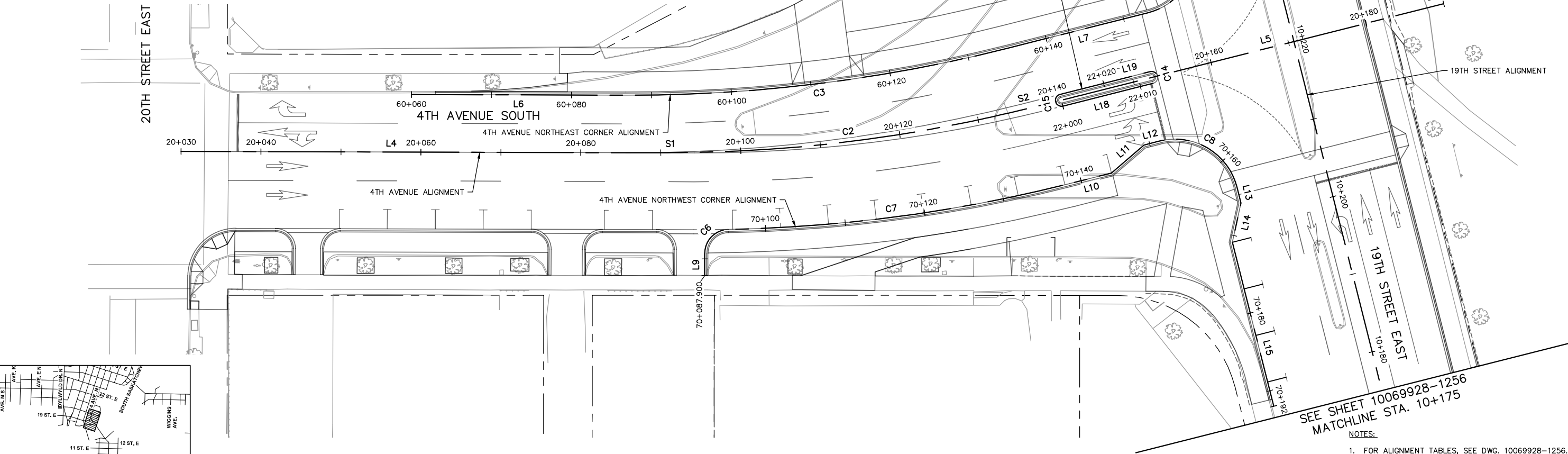
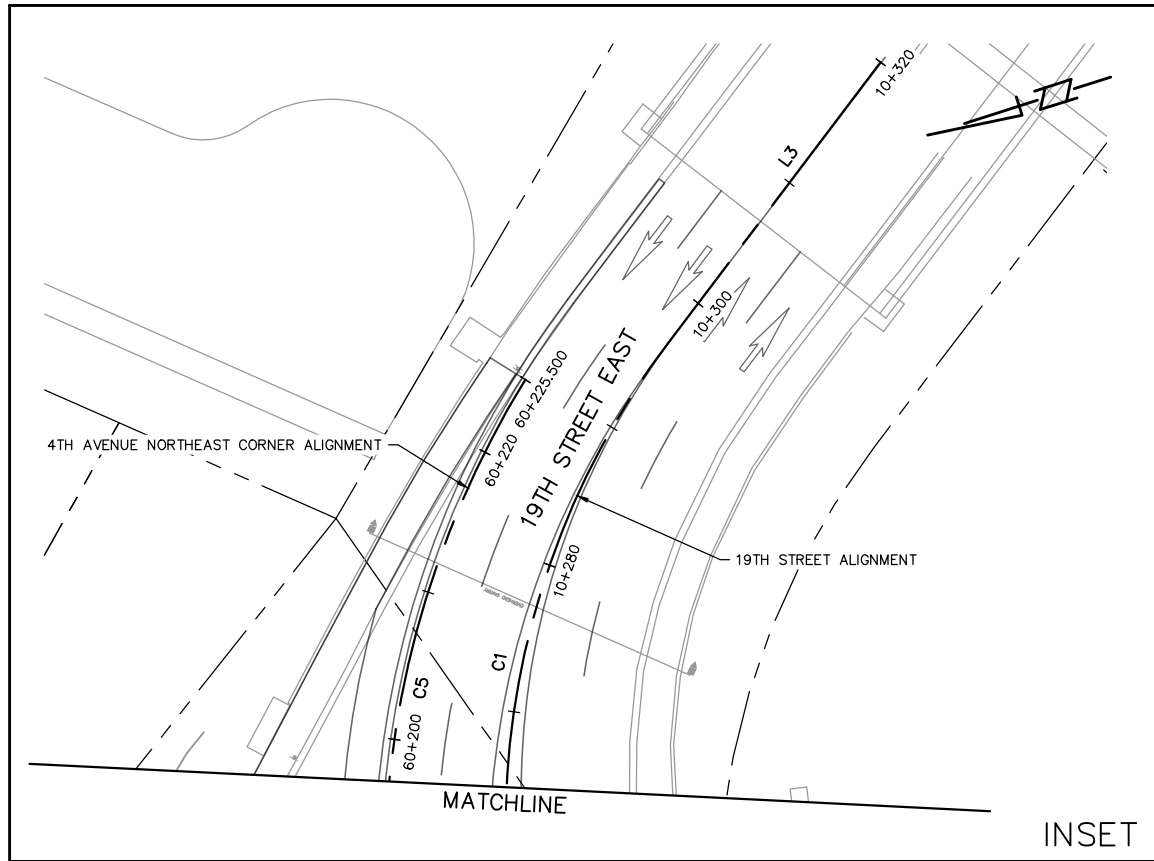
11					
10					
9					
8					
7					
6					
5					
4					
3					
2	RE-ISSUED FOR REVIEW	2020/03/25	IM		
1	ISSUED FOR REVIEW	2020/01/30	IM		
	PLAN DESCRIPTION/REVISION	DATE	BY	SEAL	

CHECKED BY:	CHECKED BY:
DATE	DATE
DRAWN BY:	DATE

City of Saskatoon
Transportation & Utilities Department

BUS RAPID TRANSIT PROJECT
DETAIL DESIGN
4TH AVENUE / 19TH STREET INTERSECTION
ALIGNMENT PLAN
19TH STREET STA. 10+020 TO STA. 10+175 & ALIGNMENT TABLES

CHIEF ENGINEER	DATE
SCALES : HOR. 1:500 VERT. 1:500	
SHEET NO. 10069928-1256	PLAN NO.



SEE SHEET 10069928-1256
MATCHLINE STA. 10+175

NOTES:
1. FOR ALIGNMENT TABLES, SEE DWG. 10069928-1256.

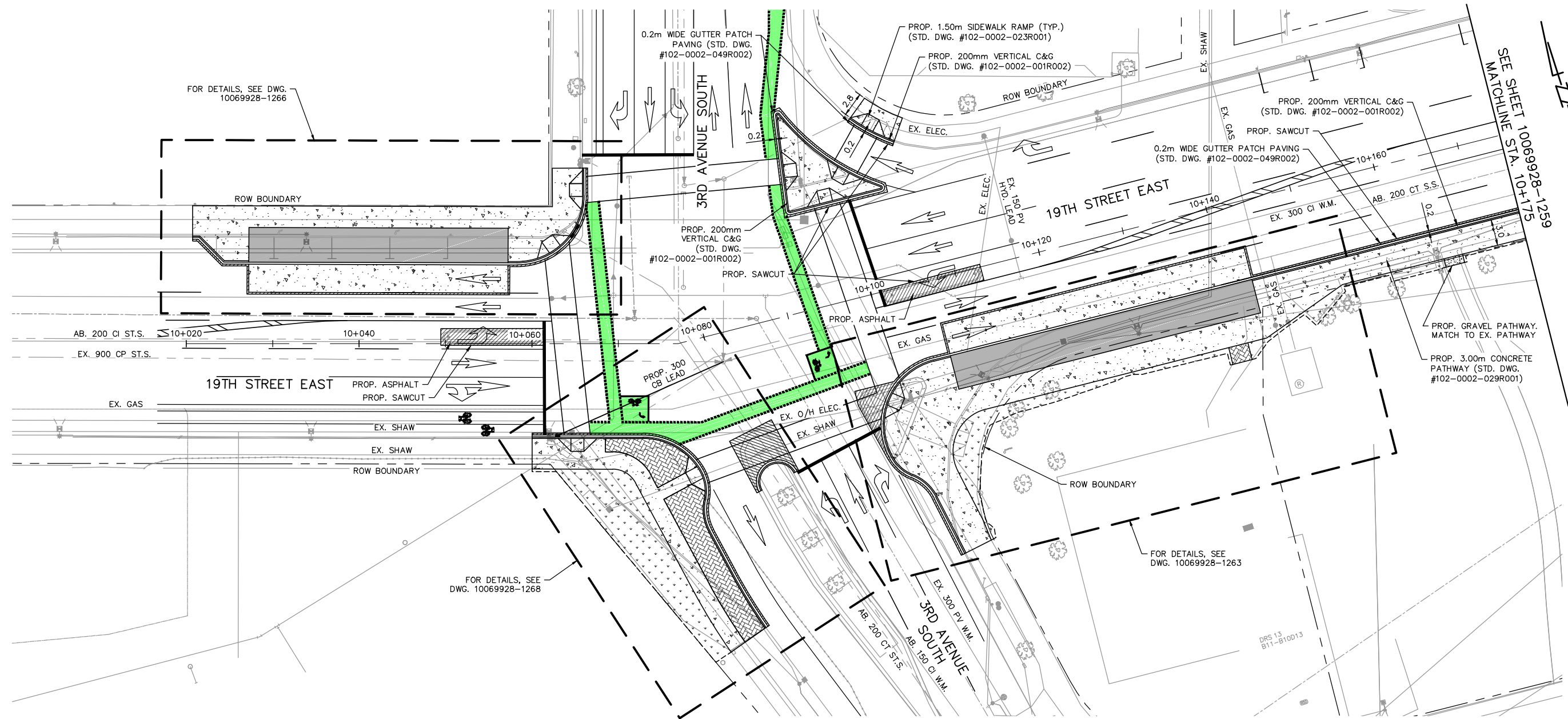
11				
10				
9				
8				
7				
6				
5				
4				
3				
2	RE-ISSUED FOR REVIEW	2020/03/25	IM	
1	ISSUED FOR REVIEW	2020/01/30	IM	
	PLAN DESCRIPTION/REVISION	DATE	BY	SEAL

CHECKED BY:	CHECKED BY:
DATE	DATE
DRAWN BY	DATE

City of Saskatoon
Transportation & Utilities Department

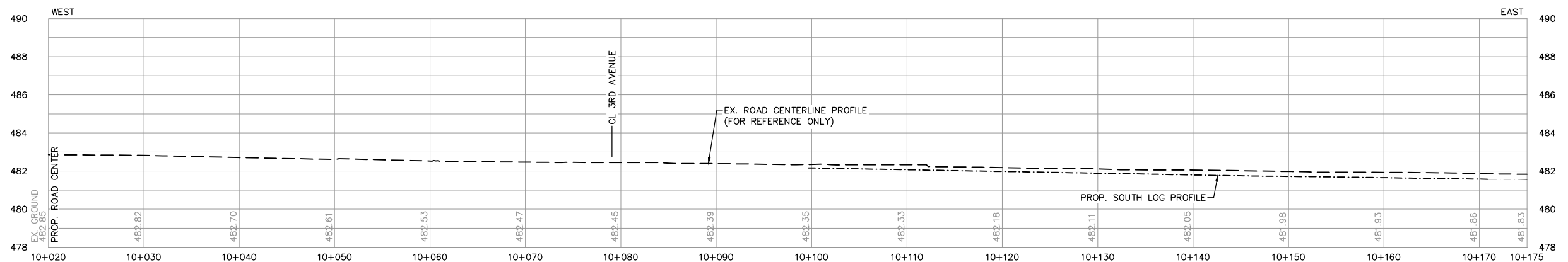
BUS RAPID TRANSIT PROJECT
DETAIL DESIGN
4TH AVENUE / 19TH STREET INTERSECTION
ALIGNMENT PLAN
19TH STREET STA. 10+175 TO STA. 10+320 & 4TH AVENUE STA. 20+020 TO STA. 20+190

CHIEF ENGINEER	
SCALES:	
HOR. 1:500	DATE
VERT.	
SHEET NO.	PLAN NO.
	10069928-1257



NOTES:

1. AT SIDEWALK TIE-INS, PROPOSED SIDEWALK CROSS GRADE TO MATCH EXISTING PATHWAY CROSS GRADE.
2. FOR PAVEMENT MARKING LAYOUT, SEE DWG. 10069928-1261.
3. FOR REMOVALS, SEE DWG. 10069928-1254.
4. UTILITY PROTECTION MAY BE REQUIRED (TBD).



11				
10				
9				
8				
7				
6				
5				
4				
3				
2	RE-ISSUED FOR REVIEW	2020/03/25	IM	
1	ISSUED FOR REVIEW	2020/01/30	IM	
	PLAN DESCRIPTION/REVISION	DATE	BY	SEAL

CHECKED BY:	CHECKED BY:
DATE	DATE
DRAWN BY:	DATE

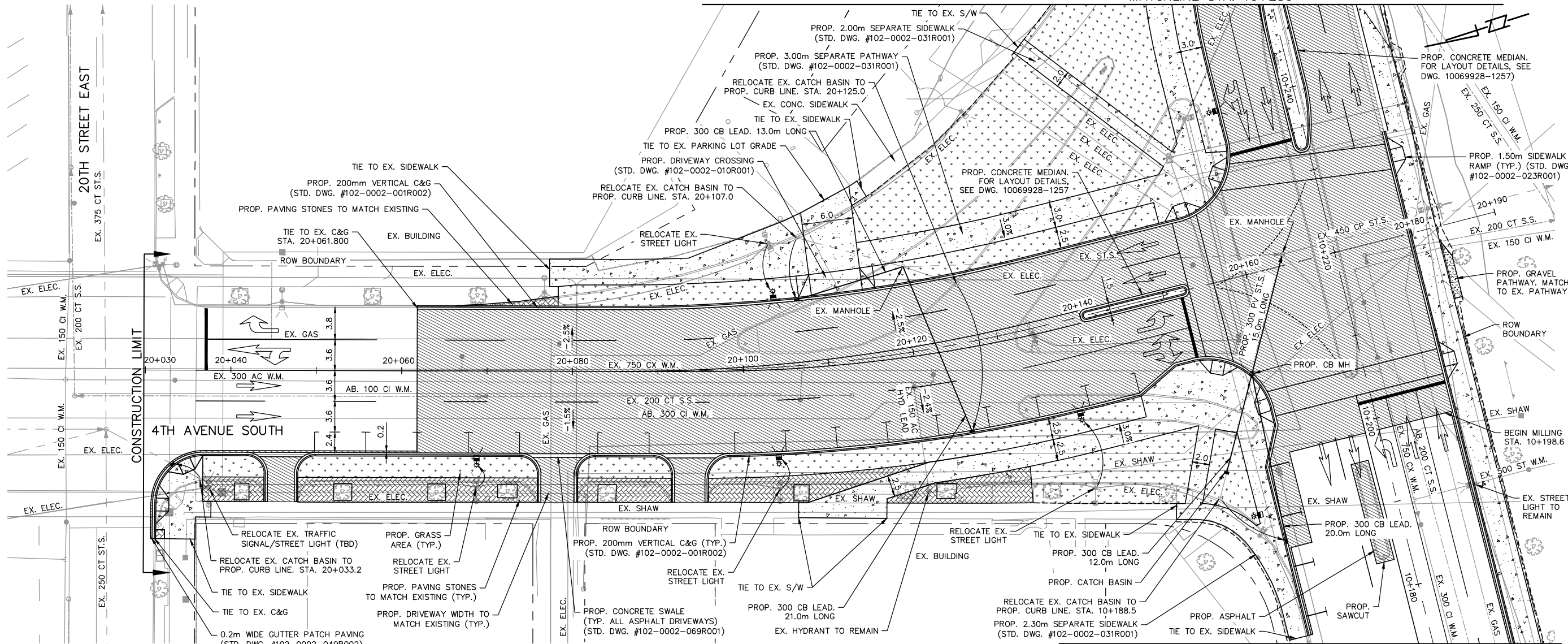


City of Saskatoon
Transportation & Utilities Department

BUS RAPID TRANSIT PROJECT
DETAIL DESIGN
4TH AVENUE / 19TH STREET INTERSECTION
PLAN / PROFILE
19TH STREET STA. 10+020 TO STA. 10+175

CHIEF ENGINEER	
SCALES:	DATE
HOR. 1:500	
VERT. 1:250	
SHEET NO.	PLAN NO.
	10069928-1258

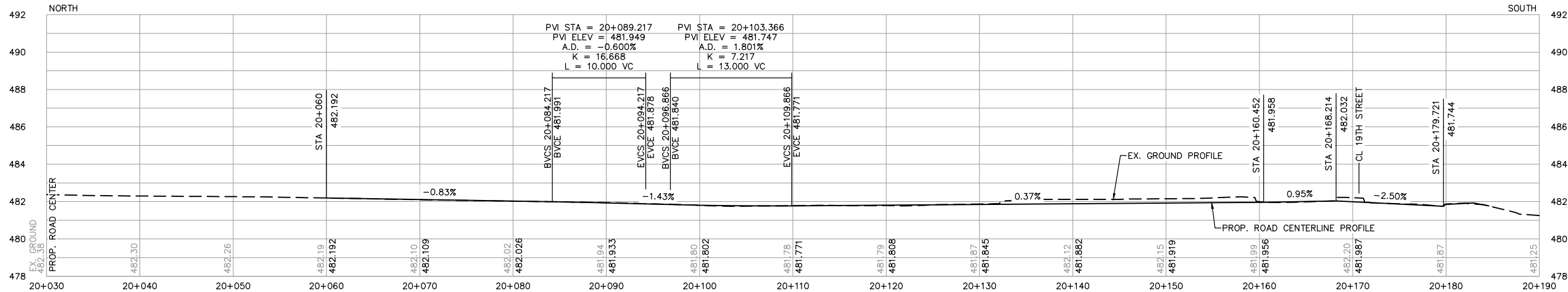
SEE SHEET 10069928-1259
MATCHLINE STA. 10+250



SEE SHEET 10069928-1258
MATCHLINE STA. 20+175

NOTES:

1. AT SIDEWALK TIE-INS, PROPOSED SIDEWALK CROSS GRADE TO MATCH EXISTING PATHWAY CROSS GRADE.
2. FOR PAVEMENT MARKING LAYOUT, SEE DWG. 10069928-1262.
3. FOR REMOVALS, SEE DWG. 10069928-1255.
4. UTILITY PROTECTION MAY BE REQUIRED (TBD).



11			
10			
9			
8			
7			
6			
5			
4			
3			
2	RE-ISSUED FOR REVIEW	2020/03/25	IM
1	ISSUED FOR REVIEW	2020/01/30	IM
	PLAN DESCRIPTION/REVISION	DATE	BY

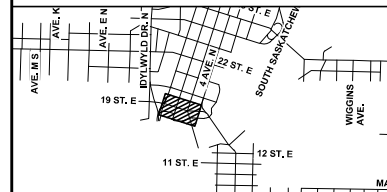
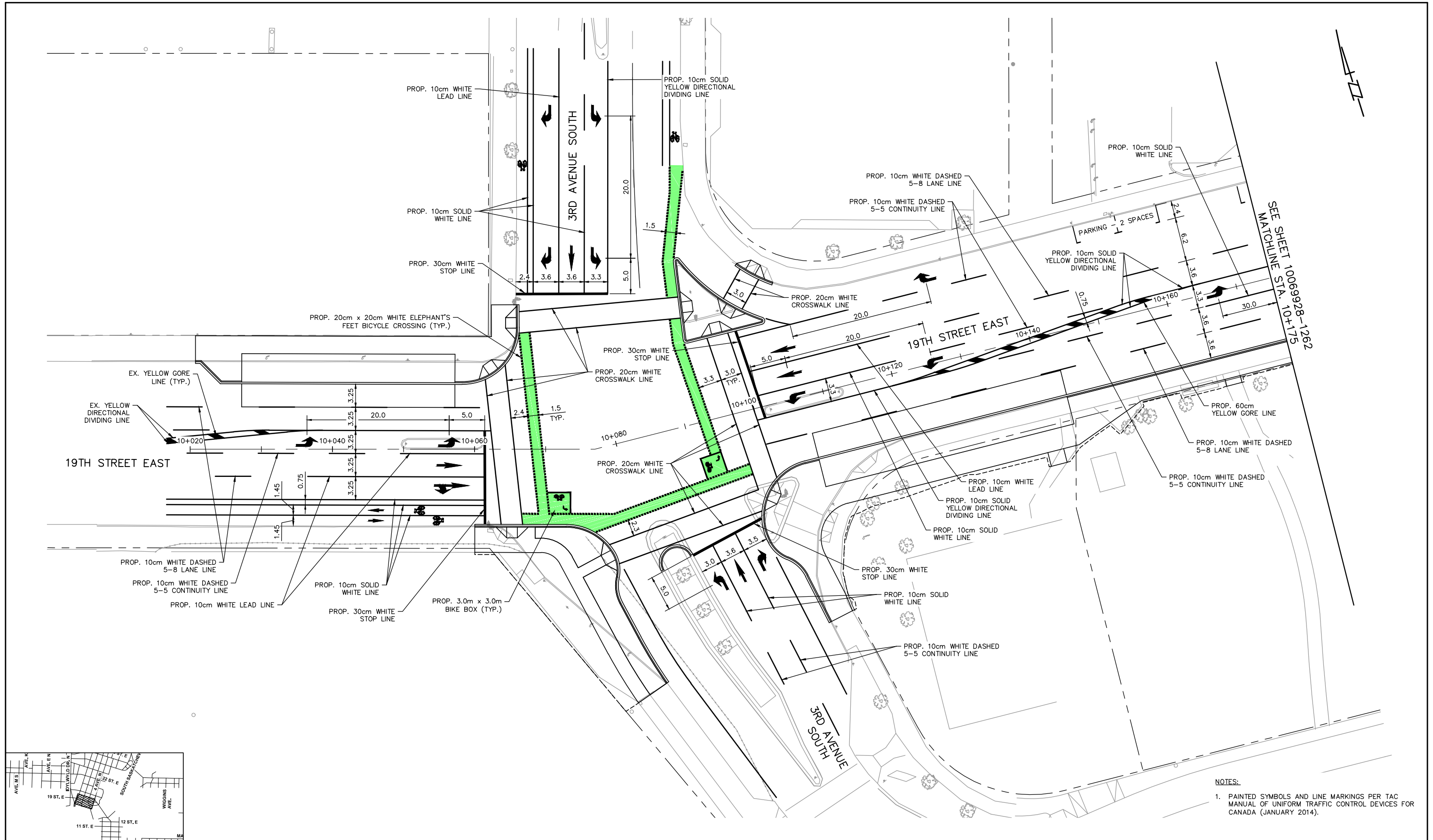
CHECKED BY:	CHECKED BY:
DATE	DATE
DRAWN BY	DATE



**City of
Saskatoon**
Transportation & Utilities Department

BUS RAPID TRANSIT PROJECT
DETAIL DESIGN
4TH AVENUE / 19TH STREET INTERSECTION
PLAN / PROFILE
4TH AVENUE STA. 20+030 TO STA. 20+190

CHIEF ENGINEER
SCALES:
HOR. 1:500
VERT. 1:250
SHEET NO. 10069928-1260
PLAN NO. DATE



NOTES:
1. PAINTED SYMBOLS AND LINE MARKINGS PER TAC MANUAL OF UNIFORM TRAFFIC CONTROL DEVICES FOR CANADA (JANUARY 2014).

11				
10				
9				
8				
7				
6				
5				
4				
3				
2	RE-ISSUED FOR REVIEW	2020/03/25	IM	
1	ISSUED FOR REVIEW	2020/01/30	IM	
	PLAN DESCRIPTION/REVISION	DATE	BY	SEAL

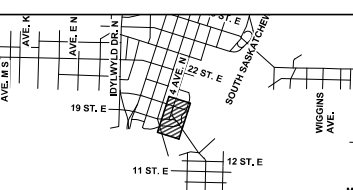
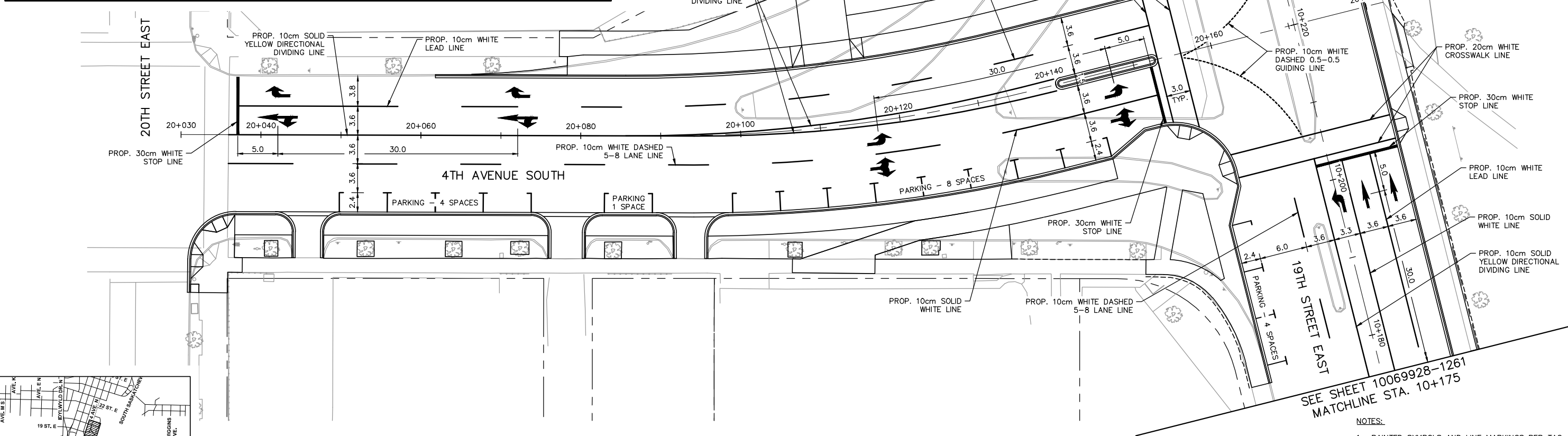
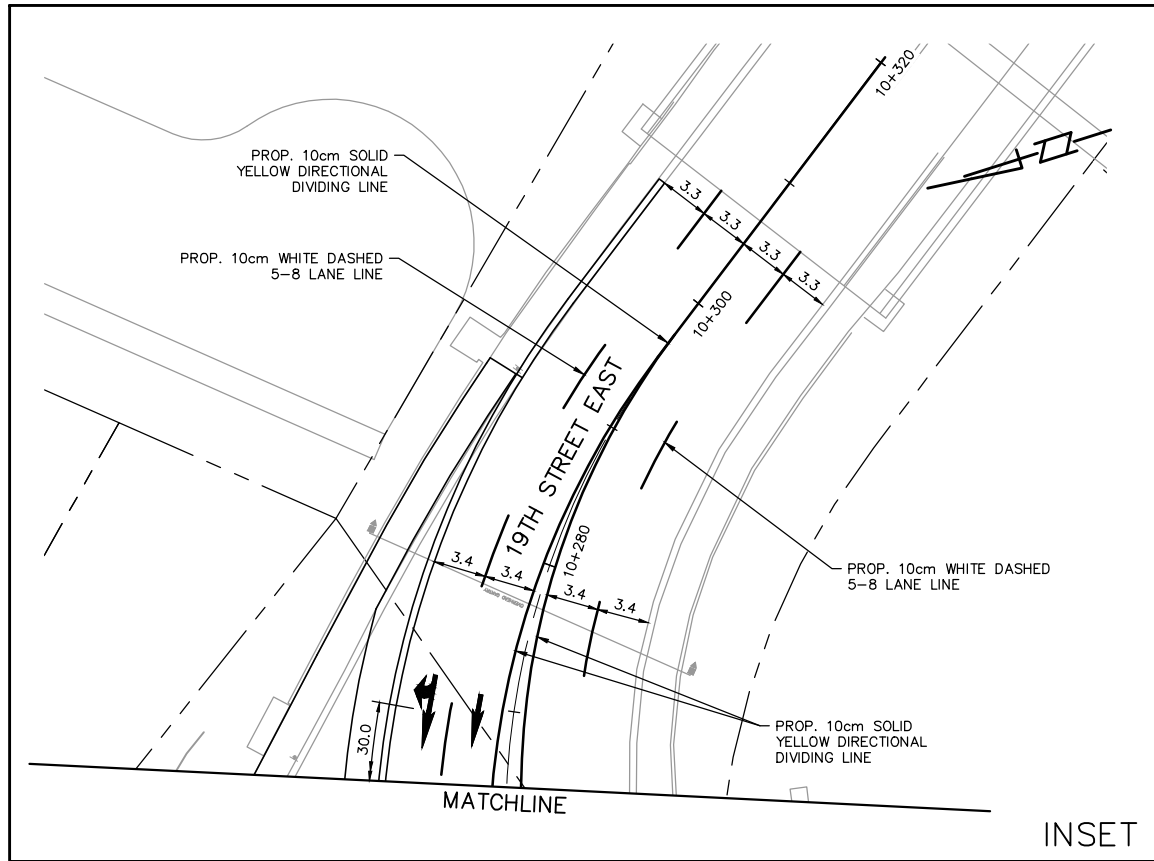
CHECKED BY:	CHECKED BY:
DATE	DATE
DRAWN BY:	DATE



City of Saskatoon
Transportation & Utilities Department

BUS RAPID TRANSIT PROJECT
DETAIL DESIGN
4TH AVENUE / 19TH STREET INTERSECTION
PAVEMENT MARKING PLAN
19TH STREET STA. 10+020 TO STA. 10+175

CHIEF ENGINEER	
SCALES:	DATE
HOR. 1:500	
VERT.	
SHEET NO.	PLAN NO.
	10069928-1261



SEE SHEET 10069928-1261
MATCHLINE STA. 10+175

- NOTES:
1. PAINTED SYMBOLS AND LINE MARKINGS PER TAC MANUAL OF UNIFORM TRAFFIC CONTROL DEVICES FOR CANADA (JANUARY 2014).

11				
10				
9				
8				
7				
6				
5				
4				
3				
2	RE-ISSUED FOR REVIEW	2020/03/25	IM	
1	ISSUED FOR REVIEW	2020/01/30	IM	
PLAN	DESCRIPTION/REVISION	DATE	BY	SEAL

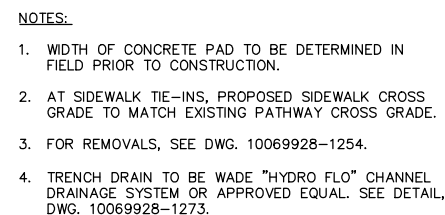
CHECKED BY:	CHECKED BY:
DATE	DATE
DRAWN BY:	DATE



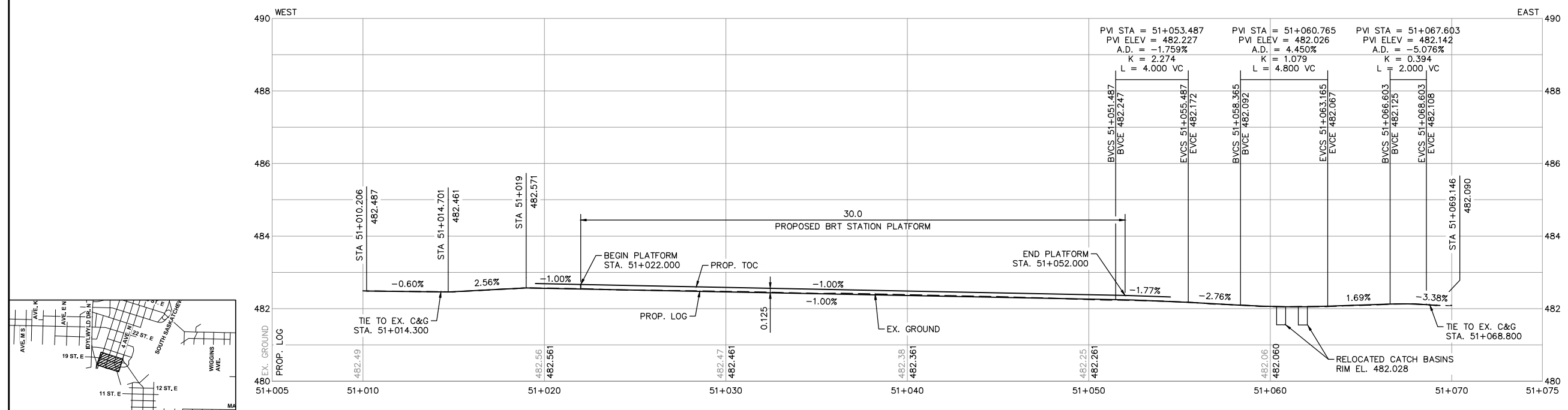
City of Saskatoon
Transportation & Utilities Department

BUS RAPID TRANSIT PROJECT
DETAIL DESIGN
4TH AVENUE / 19TH STREET INTERSECTION
PAVEMENT MARKING PLAN
19TH STREET STA. 10+175 TO STA. 10+320 &
4TH AVENUE STA. 20+030 TO STA. 20+190

CHIEF ENGINEER	
SCALES:	DATE
HOR. 1:500	
VERT.	
SHEET NO.	PLAN NO.
	10069928-1262



19TH STREET WESTBOUND STATION ALIGNMENT TABLE (LIP OF GUTTER)									
NUMBER	START STATION	START NORTHING	START EASTING	END STATION	END NORTHING	END EASTING	RADIUS	LENGTH	LINE/CHORD DIRECTION
L1	51+010.000	5776134.722	386005.548	51+014.946	5776133.223	386010.261		4.946	S72° 21' 06.99"E
L2	51+014.946	5776133.223	386010.261	51+019.000	5776129.615	386012.111		4.054	S27° 08' 51.83"E
L3	51+019.000	5776129.615	386012.111	51+053.000	5776119.192	386044.474		34.000	S72° 08' 51.83"E
C1	51+053.000	5776119.192	386044.474	51+065.621	5776124.407	386054.558	8.000	12.621	N62° 39' 21.78"E
L4	51+065.621	5776124.407	386054.558	51+070.000	5776128.584	386055.872		4.379	N17° 27' 35.40"E

[illegible]

CHECKED BY: _____ DATE _____	CHECKED BY: _____ DATE _____
DRAWN BY: _____	DATE: _____



BUS RAPID TRANSIT PROJECT

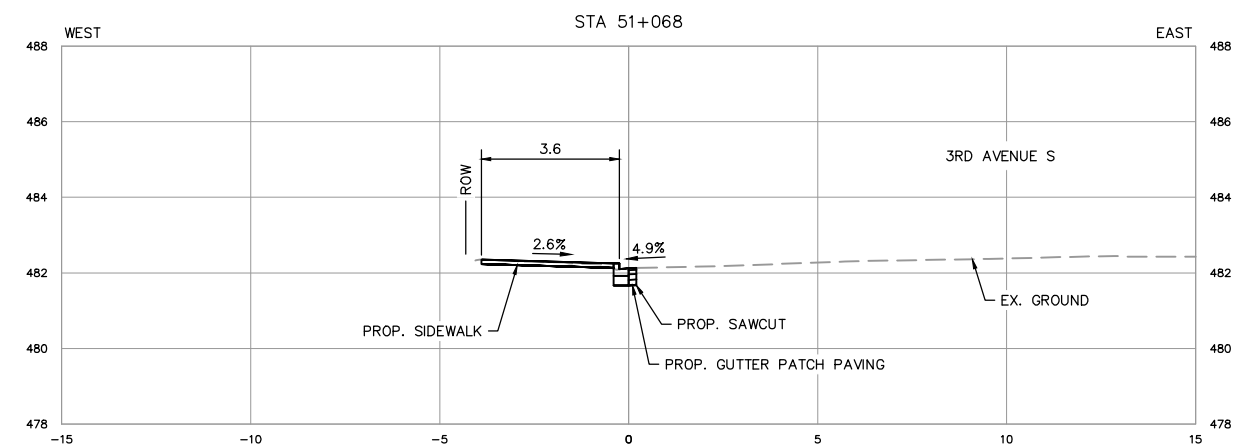
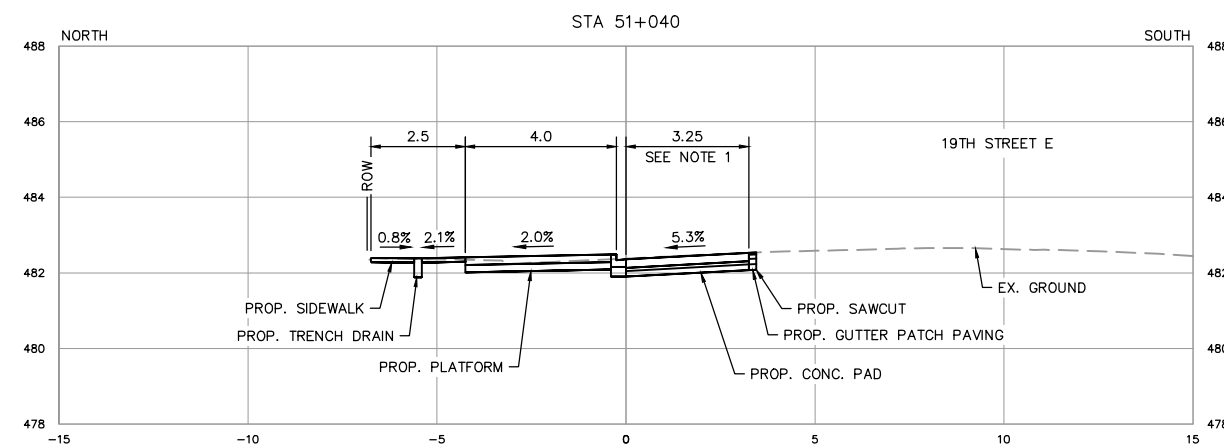
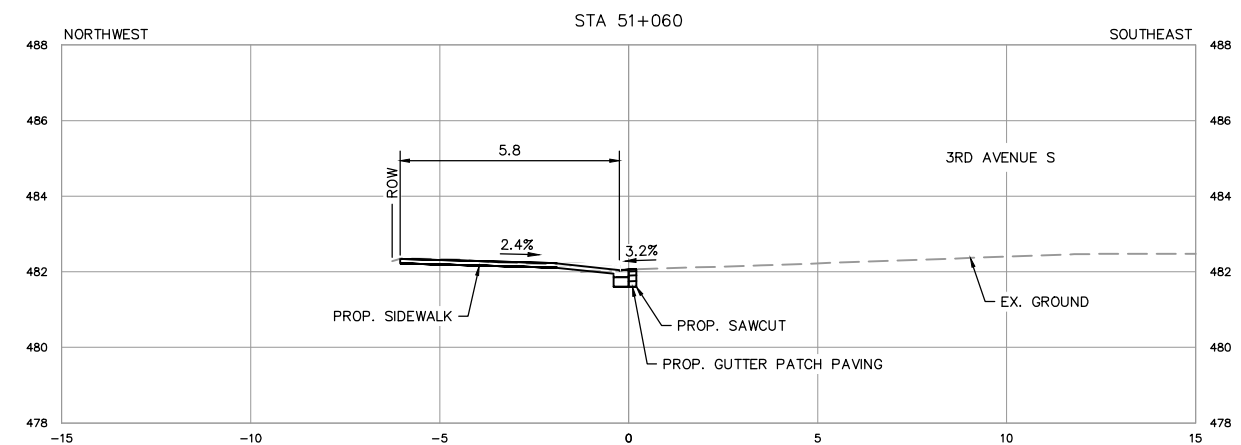
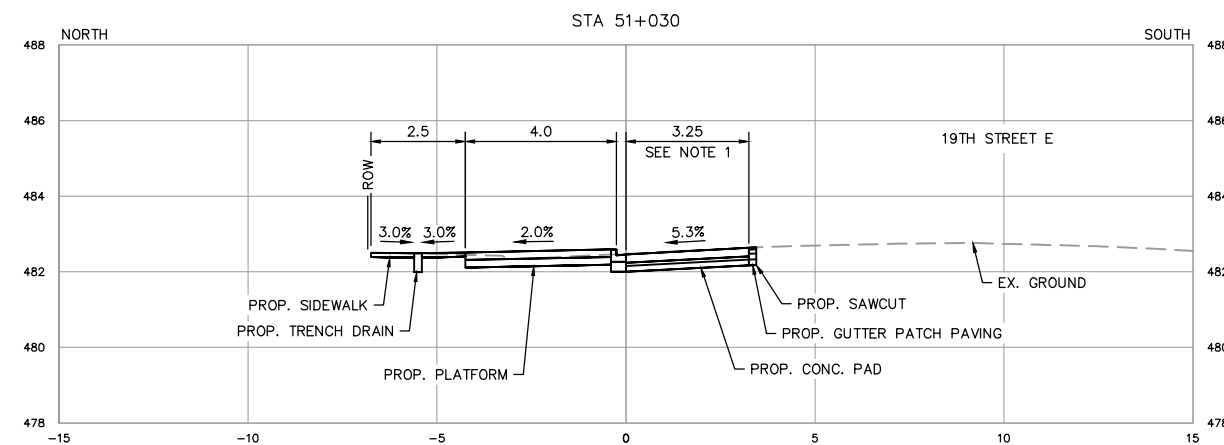
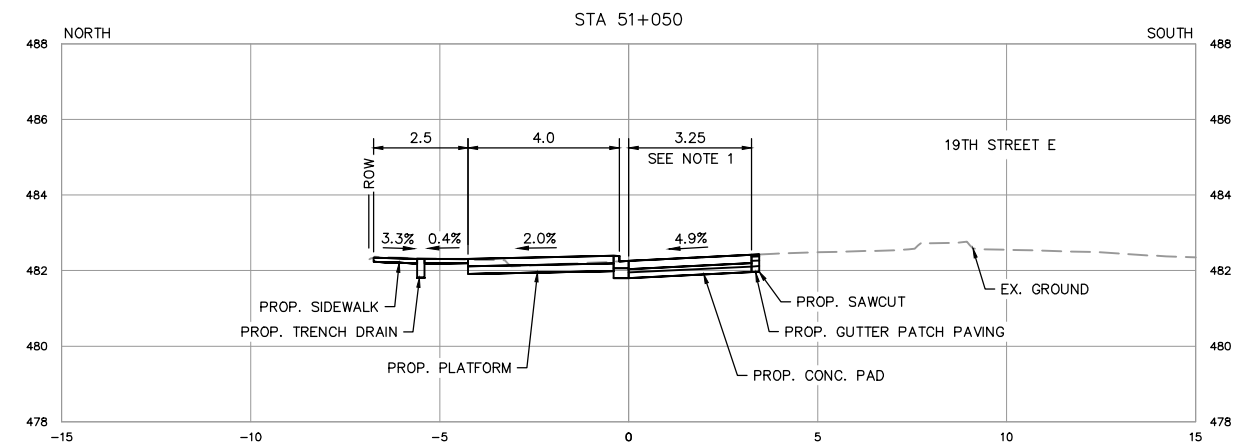
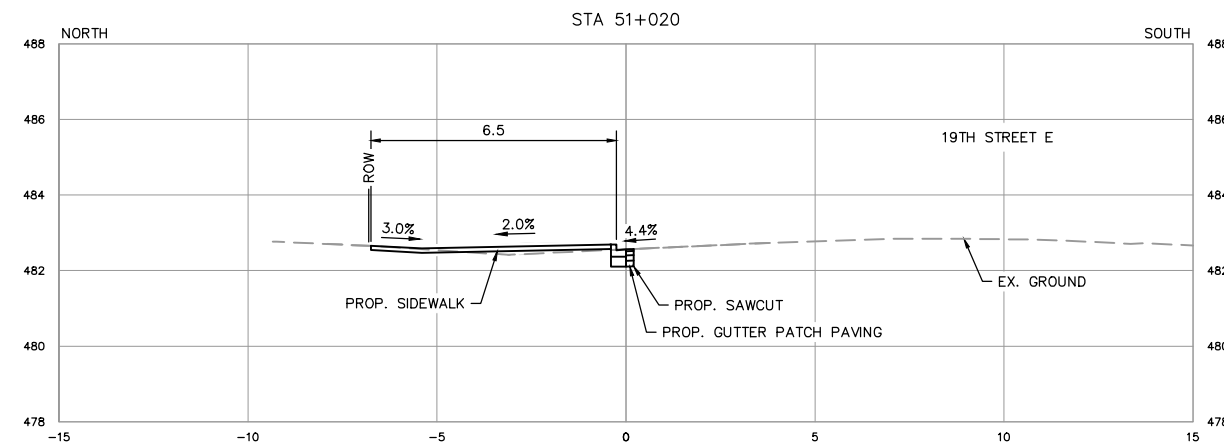
DETAIL DESIGN

3RD AVENUE / 19TH STREET INTERSECTION

19TH STREET WESTBOUND STATION

PLAN/PROFILE

CHIEF ENGINEER	
SCALES : HOR. 1:250 VERT. 1:125	_____ _____ DATE
SHEET NO.	PLAN NO. <div style="font-size: 2em; text-align: center; margin-top: 20px;">10069928-1266</div>



NOTES:
1. WIDTH OF CONCRETE PAD TO BE DETERMINED IN FIELD PRIOR TO CONSTRUCTION.

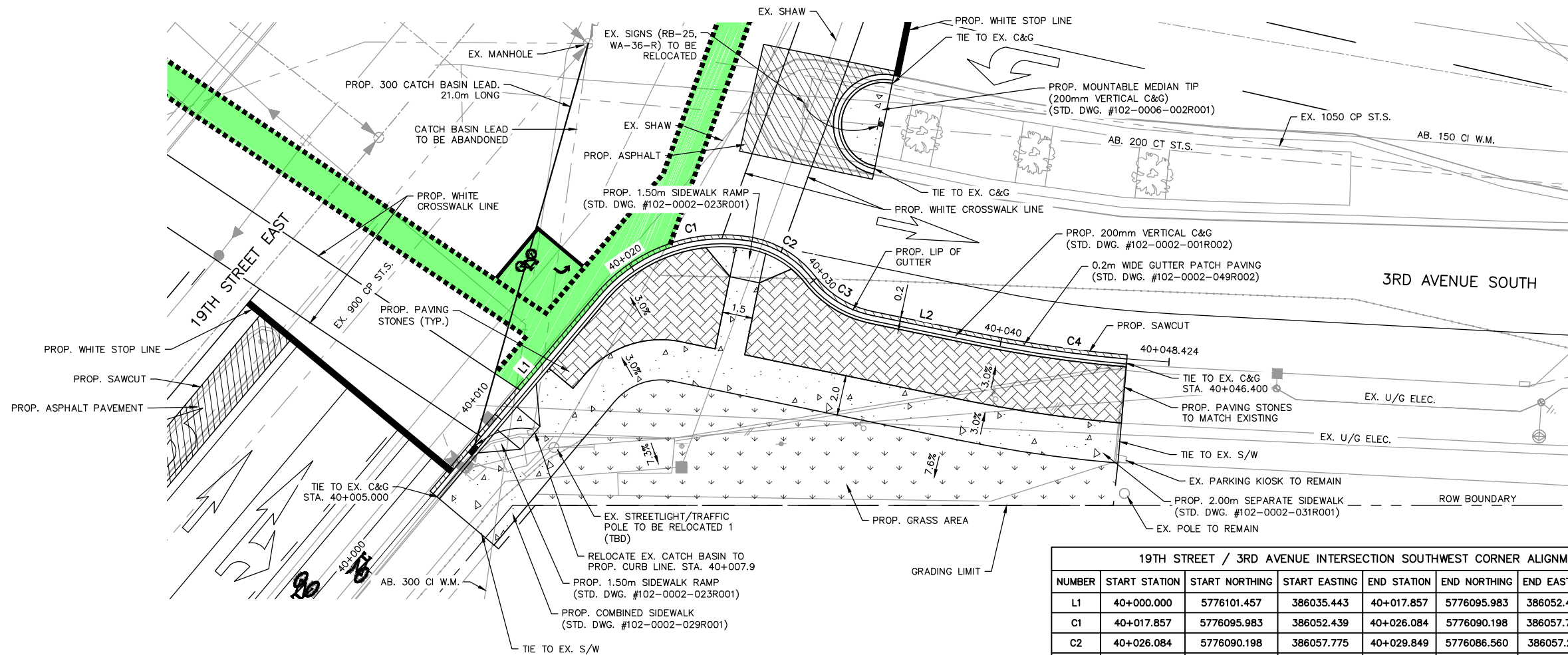
11				
10				
9				
8				
7				
6				
5				
4				
3				
2	RE-ISSUED FOR REVIEW	2020/03/25	IM	
1	ISSUED FOR REVIEW	2020/01/30	IM	
PLAN	DESCRIPTION/REVISION	DATE	BY	SEAL

CHECKED BY:	CHECKED BY:
DATE	DATE
DRAWN BY	DATE

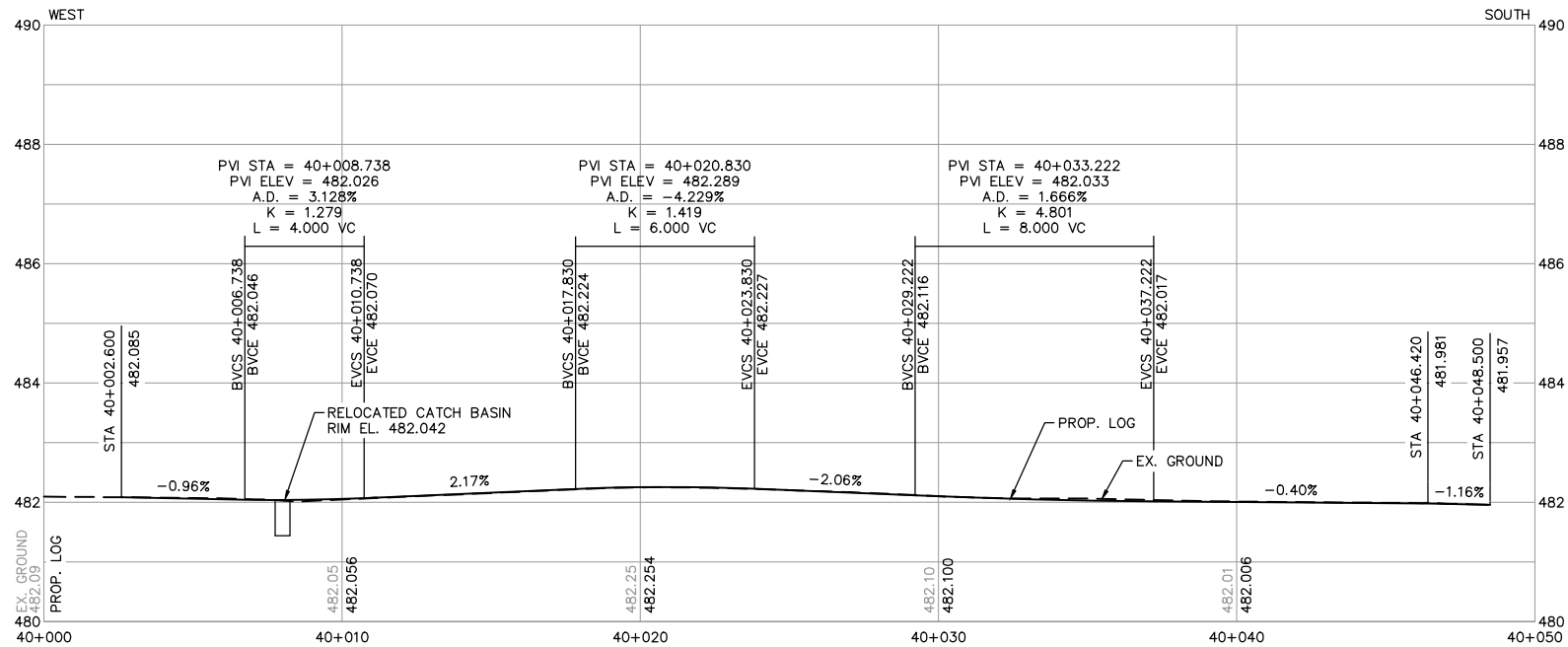


BUS RAPID TRANSIT PROJECT	
DETAIL DESIGN	
3RD AVENUE / 19TH STREET INTERSECTION	
19TH STREET WESTBOUND STATION	
CROSS SECTIONS	

CHIEF ENGINEER	
SCALES :	DATE
HOR. 1:200	
VERT. 1:200	
SHEET NO.	PLAN NO.
	10069928-1267



19TH STREET / 3RD AVENUE INTERSECTION SOUTHWEST CORNER ALIGNMENT TABLE (LIP OF GUTTER)									
NUMBER	START STATION	START NORTHING	START EASTING	END STATION	END NORTHING	END EASTING	RADIUS	LENGTH	LINE/CHORD DIRECTION
L1	40+000.000	5776101.457	386035.443	40+017.857	5776095.983	386052.439		17.857	S72° 08' 56.68"E
C1	40+017.857	5776095.983	386052.439	40+026.084	5776090.198	386057.775	8.000	8.227	S42° 41' 10.70"E
C2	40+026.084	5776090.198	386057.775	40+029.849	5776086.560	386057.241	5.000	3.766	S8° 20' 59.86"W
C3	40+029.849	5776086.560	386057.241	40+033.384	5776083.147	386056.659	5.000	3.535	S9° 40' 15.46"W
L2	40+033.384	5776083.147	386056.659	40+038.837	5776077.788	386057.661		5.452	S10° 34' 58.36"E
C4	40+038.837	5776077.788	386057.661	40+048.424	5776068.531	386060.120	63.900	9.587	S14° 52' 51.35"E



- NOTES:
1. AT SIDEWALK TIE-INS, PROPOSED SIDEWALK CROSS GRADE TO MATCH EXISTING PATHWAY CROSS GRADE.
 2. FOR REMOVALS, SEE DWG. 10069928-1254.



11				
10				
9				
8				
7				
6				
5				
4				
3				
2	RE-ISSUED FOR REVIEW	2020/03/25	IM	
1	ISSUED FOR REVIEW	2020/01/30	IM	
	PLAN DESCRIPTION/REVISION	DATE	BY	SEAL

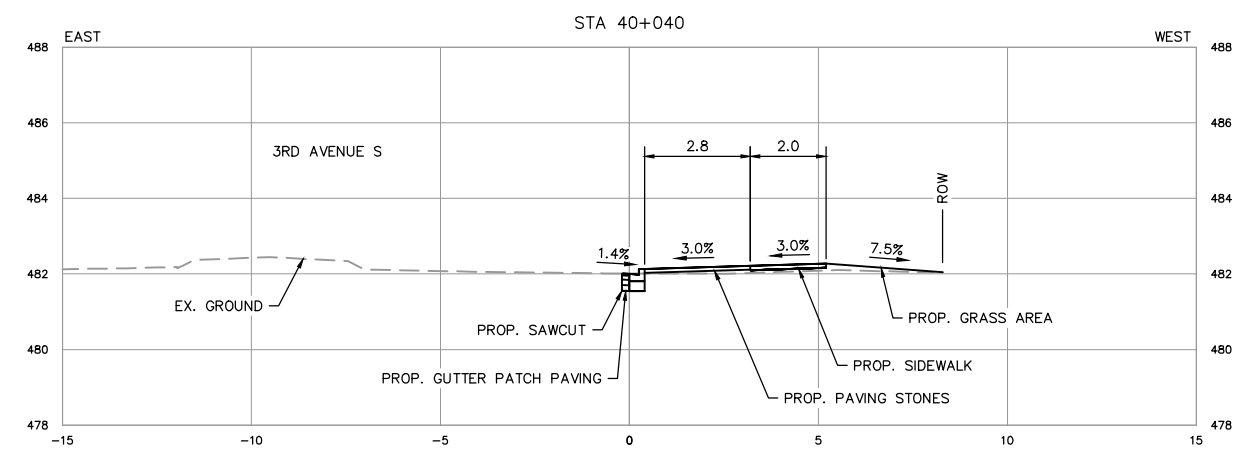
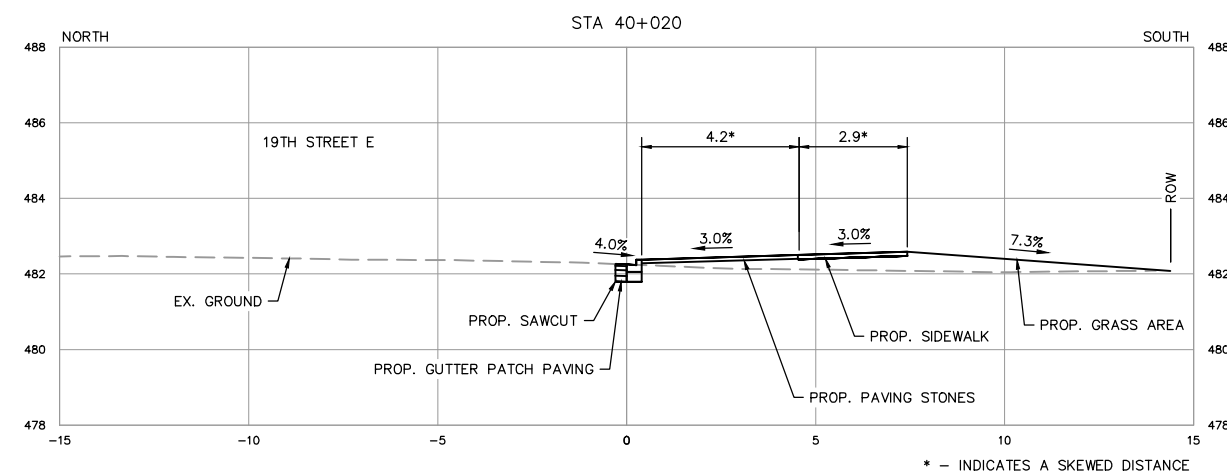
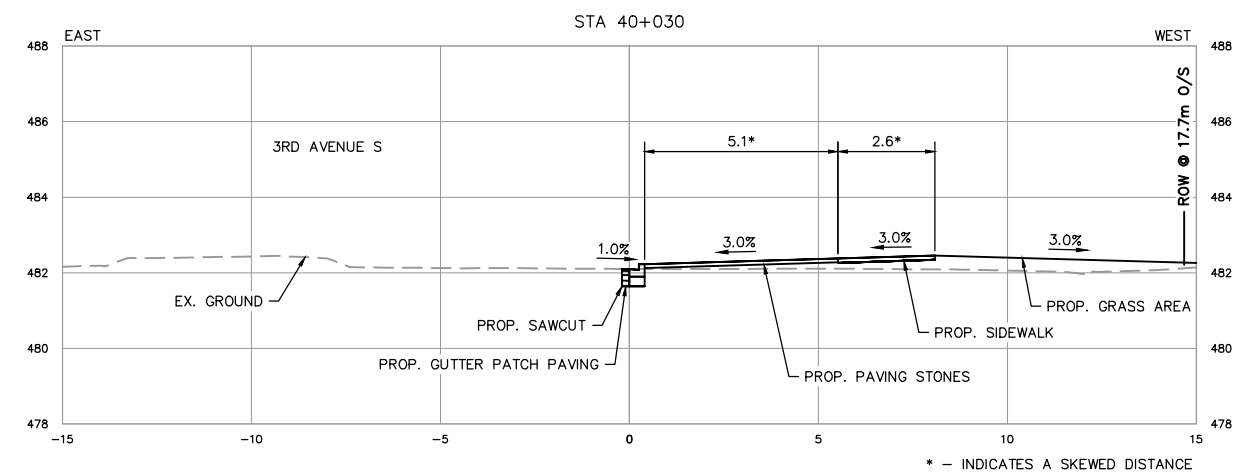
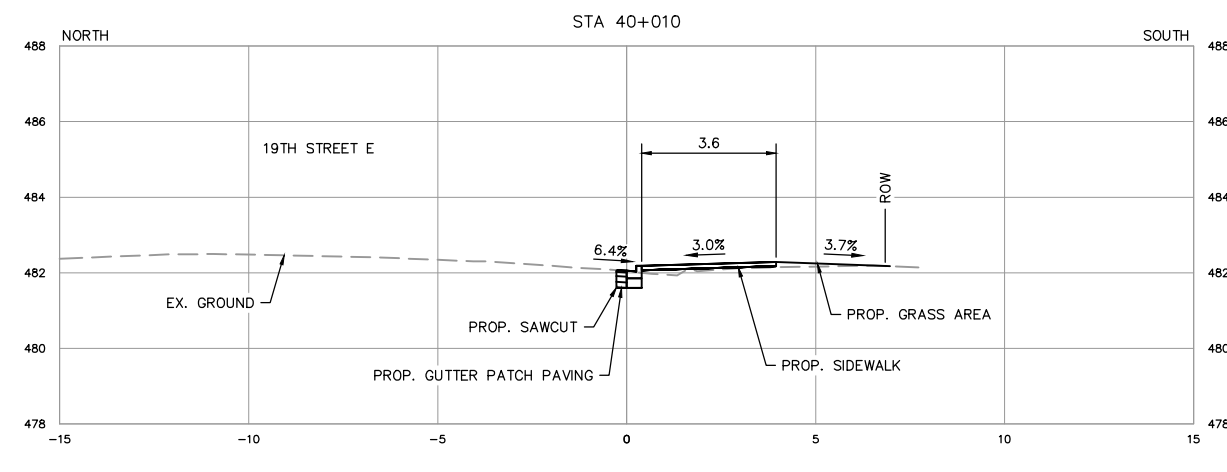
CHECKED BY:		CHECKED BY:	
DATE		DATE	
DRAWN BY		DATE	



City of
Saskatoon
Transportation & Utilities Department

BUS RAPID TRANSIT PROJECT	
DETAIL DESIGN	
3RD AVENUE / 19TH STREET INTERSECTION	
SOUTHWEST CORNER	
PLAN/PROFILE	

CHIEF ENGINEER		DATE
SCALES :		
HOR. 1:250		
VERT. 1:125		
SHEET NO.	PLAN NO.	
	10069928-1268	



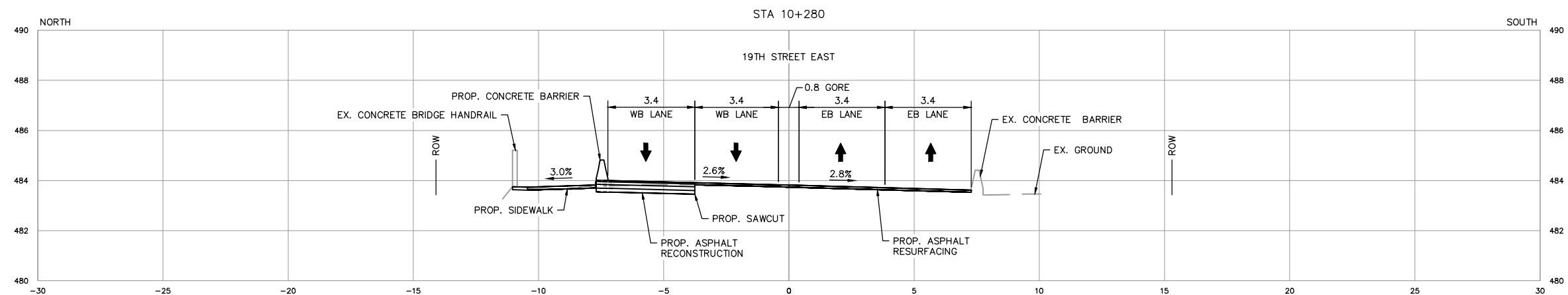
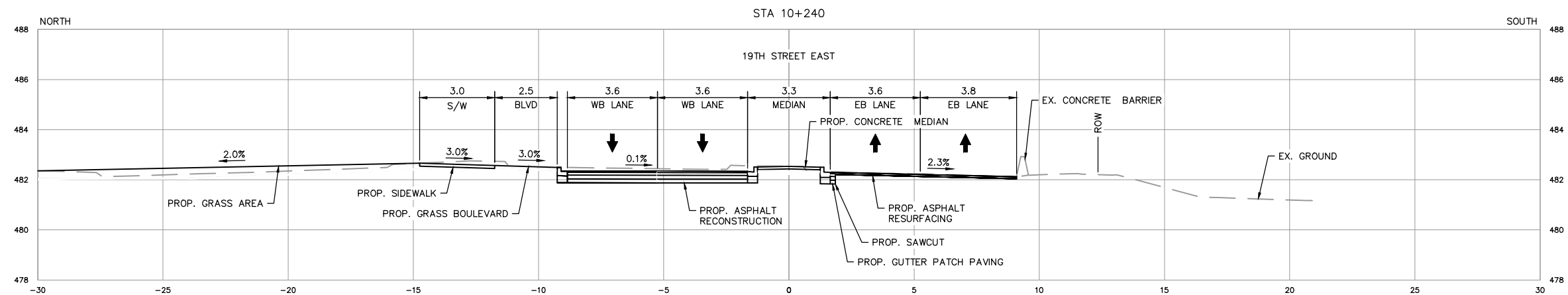
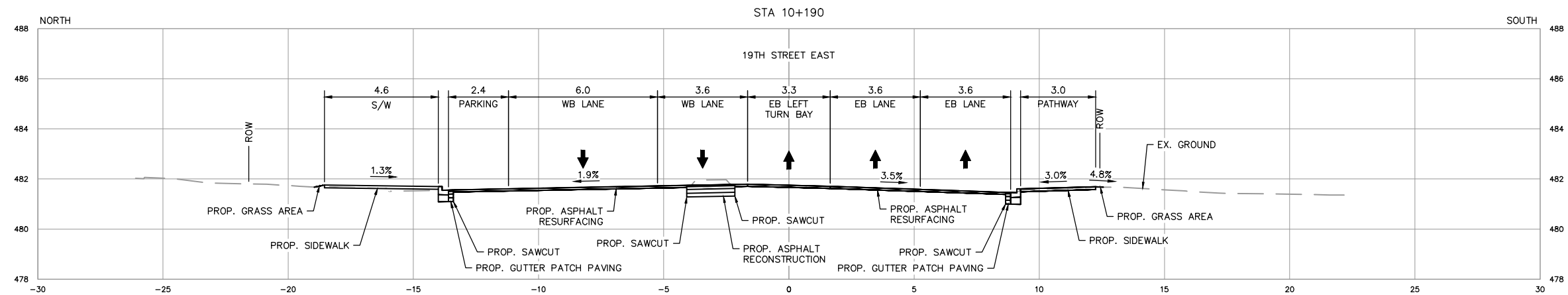
11			
10			
9			
8			
7			
6			
5			
4			
3			
2	RE-ISSUED FOR REVIEW	2020/03/25	IM
1	ISSUED FOR REVIEW	2020/01/30	IM
PLAN DESCRIPTION/REVISION	DATE	BY	SEAL

CHECKED BY:	CHECKED BY:
DATE	DATE
DRAWN BY	DATE



BUS RAPID TRANSIT PROJECT
DETAIL DESIGN
3RD AVENUE / 19TH STREET INTERSECTION
SOUTHWEST CORNER
CROSS SECTIONS

CHIEF ENGINEER	DATE
SCALES :	
HOR. 1:200	
VERT. 1:200	
SHEET NO.	PLAN NO.
	10069928-1269



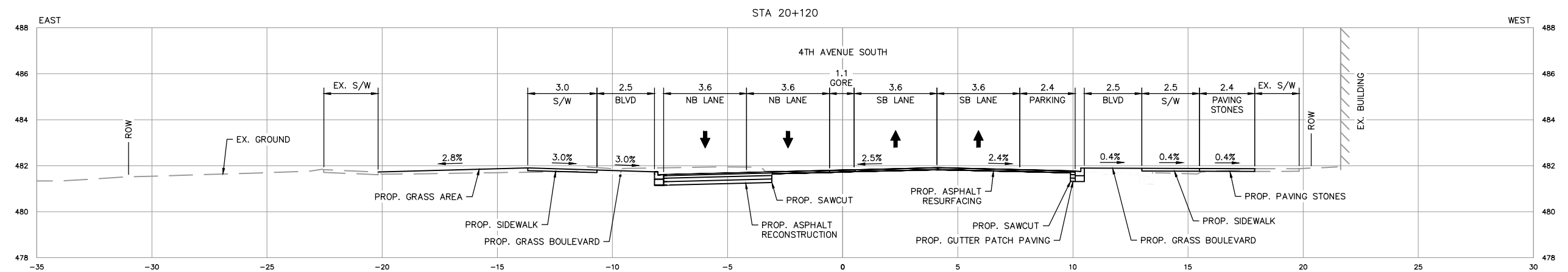
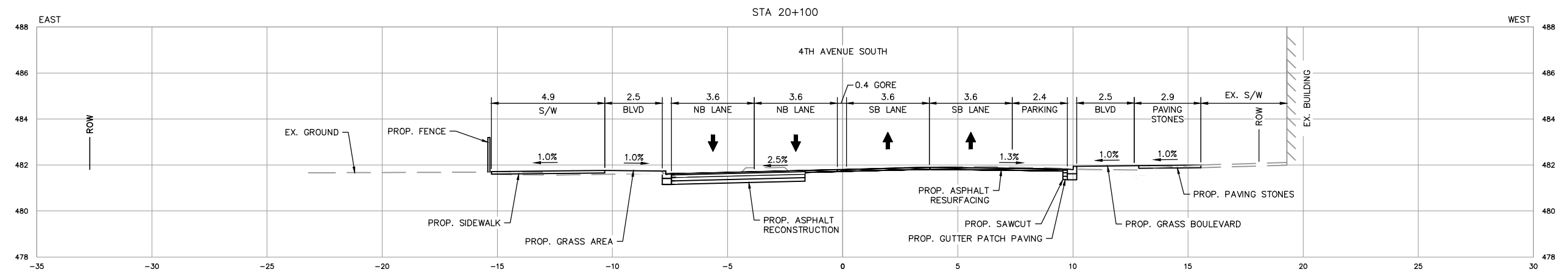
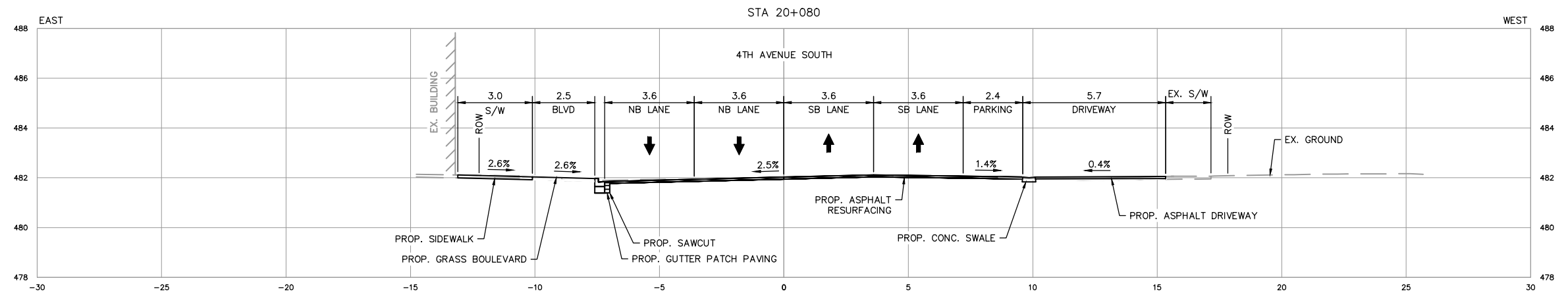
11			
10			
9			
8			
7			
6			
5			
4			
3			
2	RE-ISSUED FOR REVIEW	2020/03/25	IM
1	ISSUED FOR REVIEW	2020/01/30	IM
PLAN	DESCRIPTION/REVISION	DATE	BY

CHECKED BY:	CHECKED BY:
DATE	DATE
DRAWN BY	DATE



BUS RAPID TRANSIT PROJECT	
DETAIL DESIGN	
4TH AVENUE / 19TH STREET INTERSECTION	
19TH STREET EAST	
CROSS SECTIONS 1	

CHIEF ENGINEER	
SCALES :	DATE
HOR. 1:200	
VERT. 1:200	
SHEET NO.	PLAN NO.
	10069928-1270



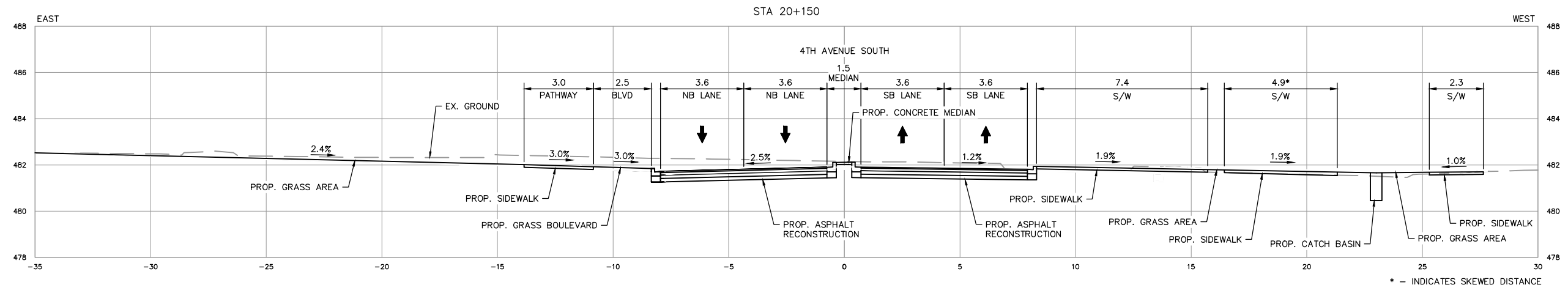
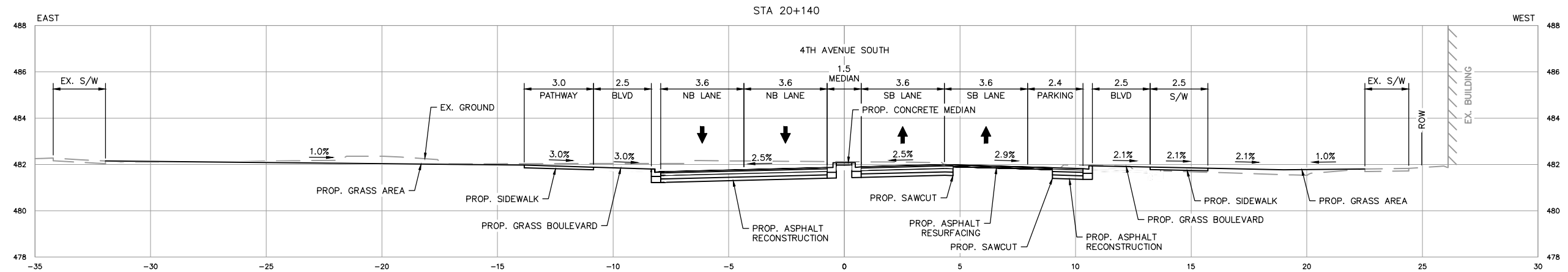
11			
10			
9			
8			
7			
6			
5			
4			
3			
2	RE-ISSUED FOR REVIEW	2020/03/25	IM
1	ISSUED FOR REVIEW	2020/01/30	IM
PLAN	DESCRIPTION/REVISION	DATE	BY

CHECKED BY:	CHECKED BY:
DATE	DATE
DRAWN BY	DATE



BUS RAPID TRANSIT PROJECT	
DETAIL DESIGN	
4TH AVENUE / 19TH STREET INTERSECTION	
4TH AVENUE SOUTH	
CROSS SECTIONS 2	

CHIEF ENGINEER	
SCALES :	DATE
HOR. 1:200	
VERT. 1:200	
SHEET NO.	PLAN NO.
	10069928-1271



* - INDICATES SKEWED DISTANCE

11			
10			
9			
8			
7			
6			
5			
4			
3			
2	RE-ISSUED FOR REVIEW	2020/03/25	IM
1	ISSUED FOR REVIEW	2020/01/30	IM
PLAN DESCRIPTION/REVISION	DATE	BY	SEAL

CHECKED BY:	CHECKED BY:
DATE	DATE
DRAWN BY	DATE

City of Saskatoon
Transportation & Utilities Department

BUS RAPID TRANSIT PROJECT

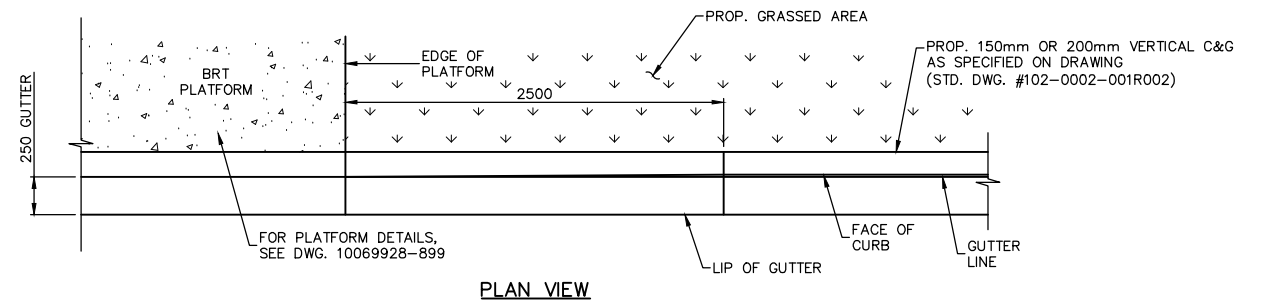
DETAIL DESIGN

4TH AVENUE / 19TH STREET INTERSECTION

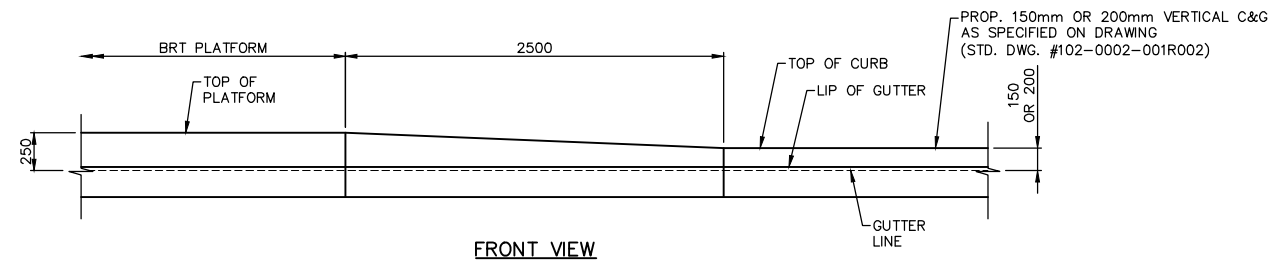
4TH AVENUE SOUTH

CROSS SECTIONS 3

CHIEF ENGINEER	DATE
SCALES :	
HOR. 1:200	
VERT. 1:200	
SHEET NO.	PLAN NO.
	10069928-1272



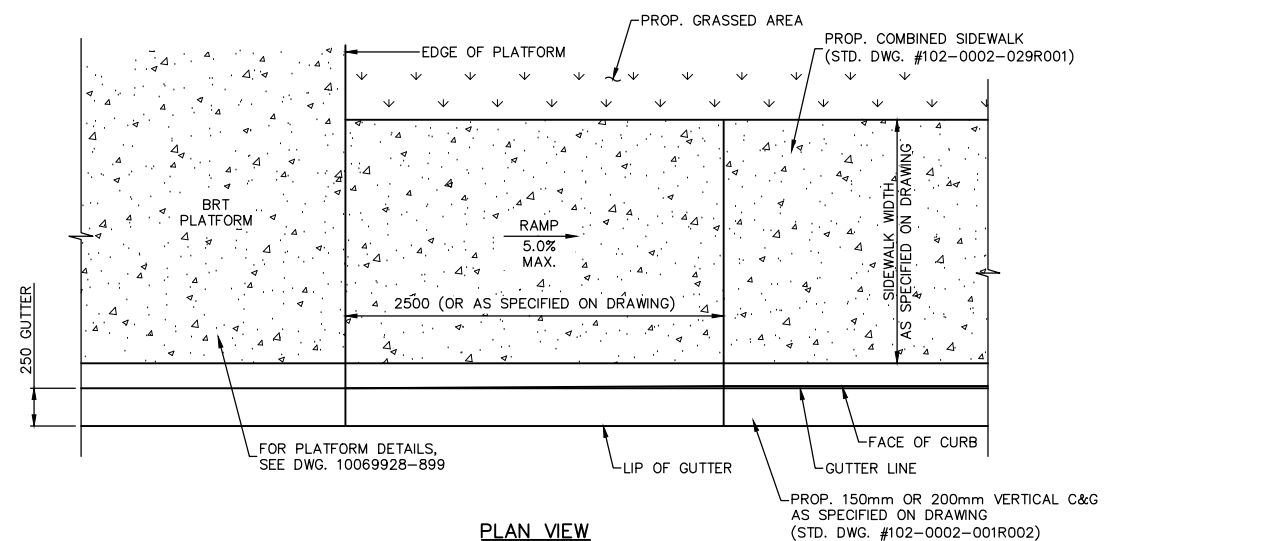
PLAN VIEW



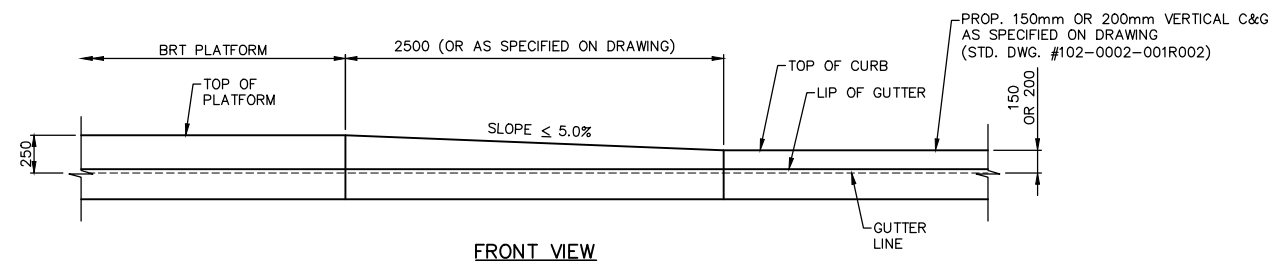
FRONT VIEW

CURB & GUTTER TRANSITION DETAIL WITHOUT SIDEWALK

SCALE 1:50



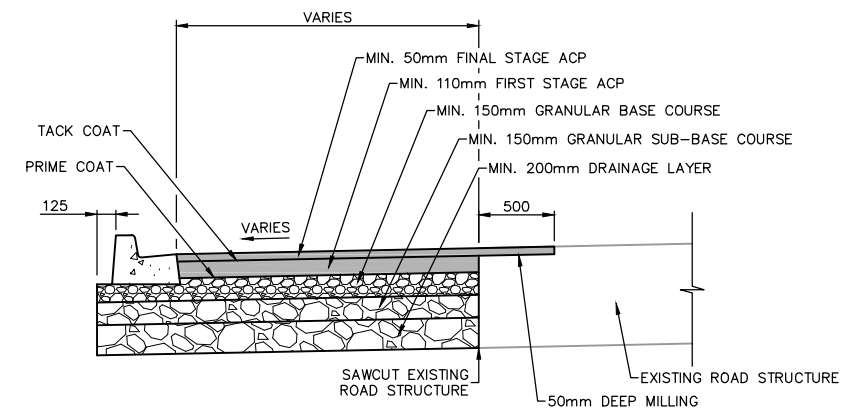
PLAN VIEW



FRONT VIEW

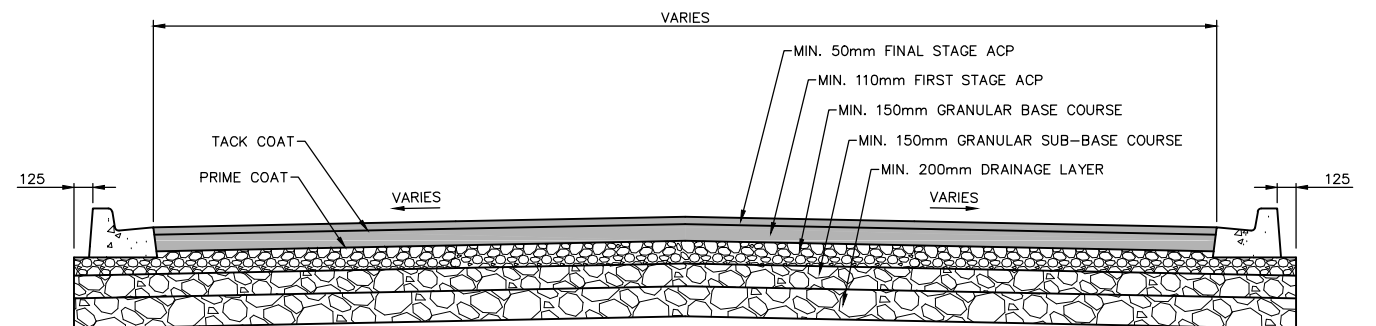
CURB & GUTTER TRANSITION DETAIL WITH COMBINED SIDEWALK

SCALE 1:50



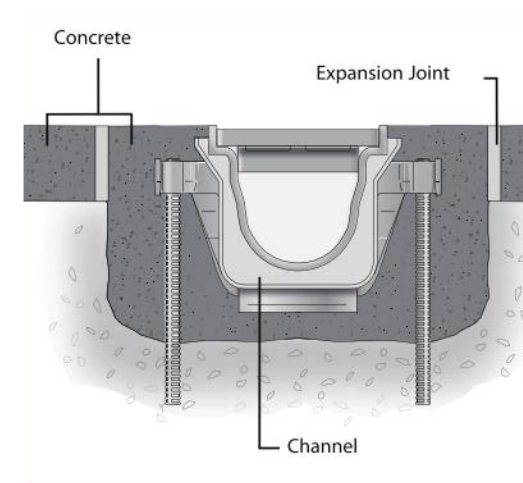
ROADWAY WIDENING DETAIL

SCALE 1:50



ROADWAY DETAIL

SCALE 1:50



NOTES:

TRENCH DRAIN TO BE WADE "HYDRO FLO" CHANNEL DRAINAGE SYSTEM OR APPROVED EQUAL.

TRENCH DRAIN DETAIL

NOT TO SCALE

11				
10				
9				
8				
7				
6				
5				
4				
3				
2	RE-ISSUED FOR REVIEW	2020/03/25	IM	
1	ISSUED FOR REVIEW	2020/01/30	IM	
PLAN DESCRIPTION/REVISION	DATE	BY	SEAL	

CHECKED BY:	CHECKED BY:
DATE	DATE
DRAWN BY	DATE



BUS RAPID TRANSIT PROJECT

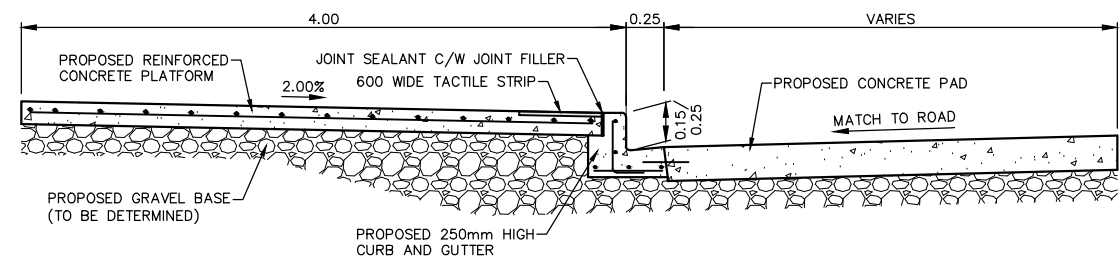
DETAIL DESIGN

4TH AVENUE / 19TH STREET INTERSECTION

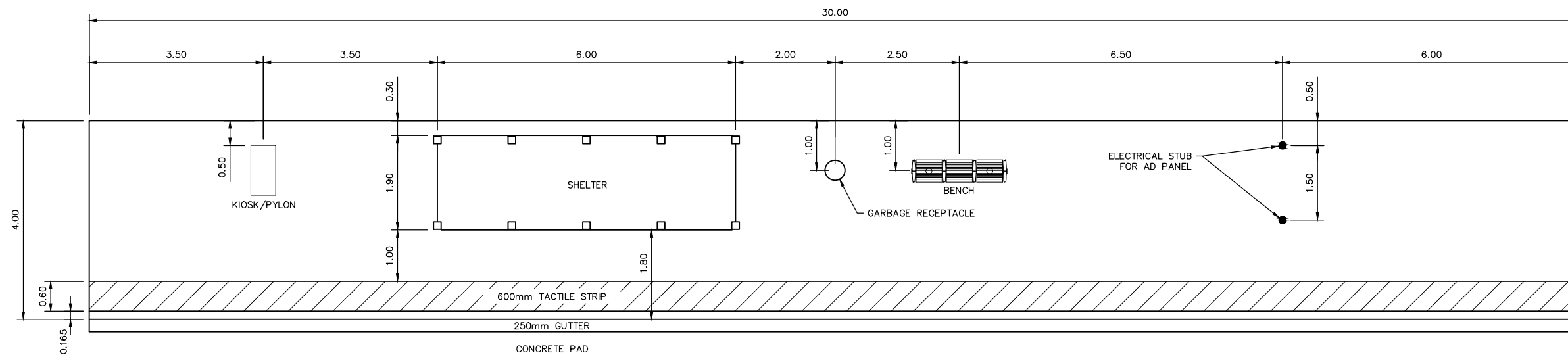
DETAILS

ROADWAY DETAILS

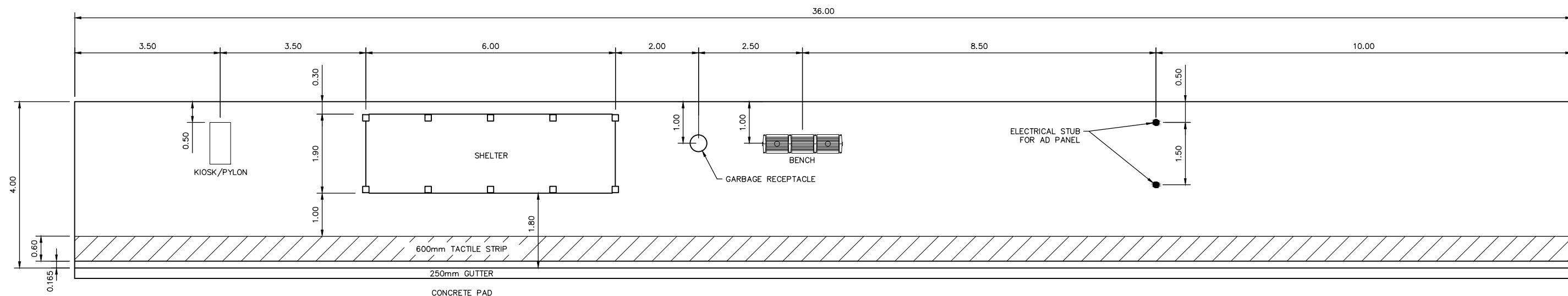
CHIEF ENGINEER	
SCALES:	
HOR. AS SHOWN	DATE
VERT.	
SHEET NO.	PLAN NO.
	10069928-1273



BRT STATION STANDARD PLATFORM CROSS SECTION (4.00m WIDTH @ 0.15m/0.25m HEIGHT)
SCALE 1:50



BRT STATION STANDARD PLATFORM LAYOUT (4.00m WIDTH @ 0.15m HEIGHT, SINGLE BUS)
SCALE 1:100



BRT STATION STANDARD PLATFORM LAYOUT (4.00m WIDTH @ 0.25m HEIGHT, TWO BUSES)
SCALE 1:100

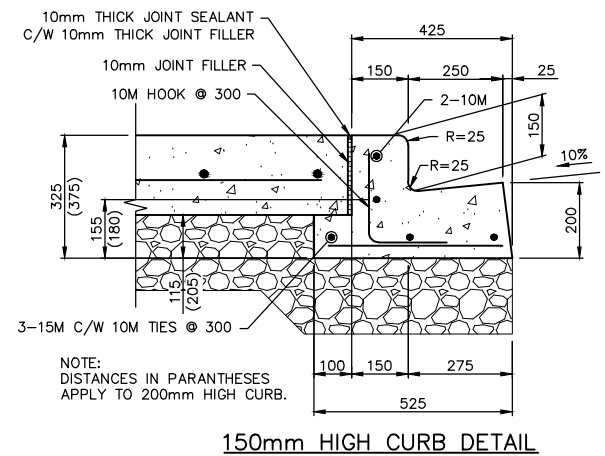
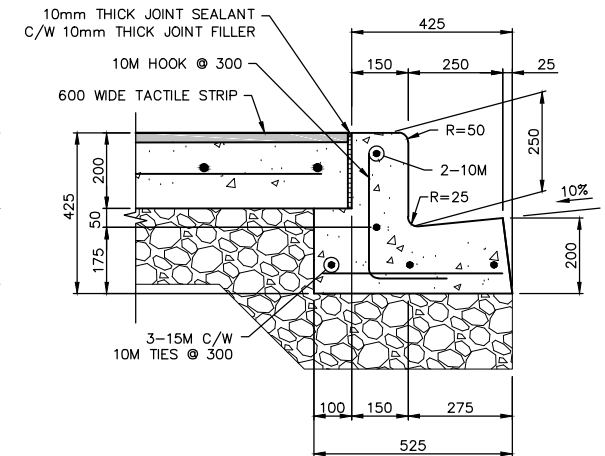
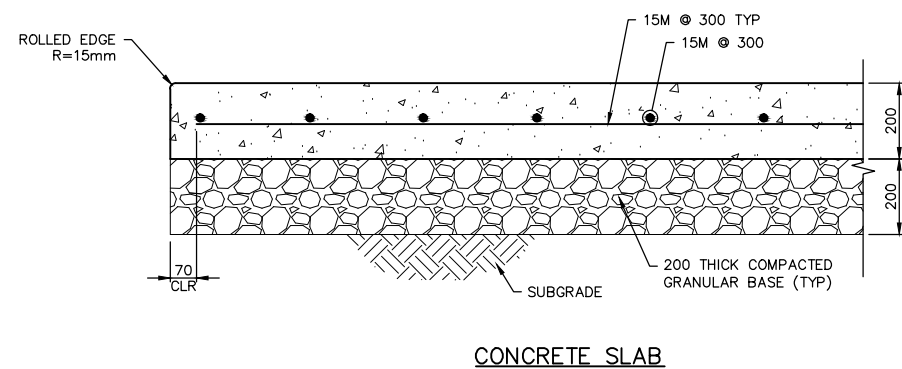
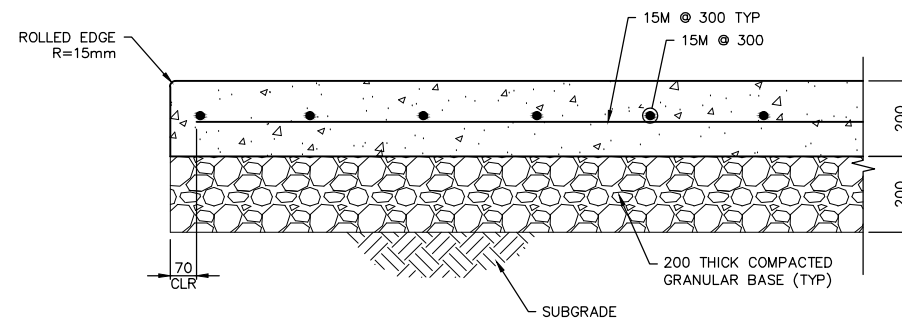
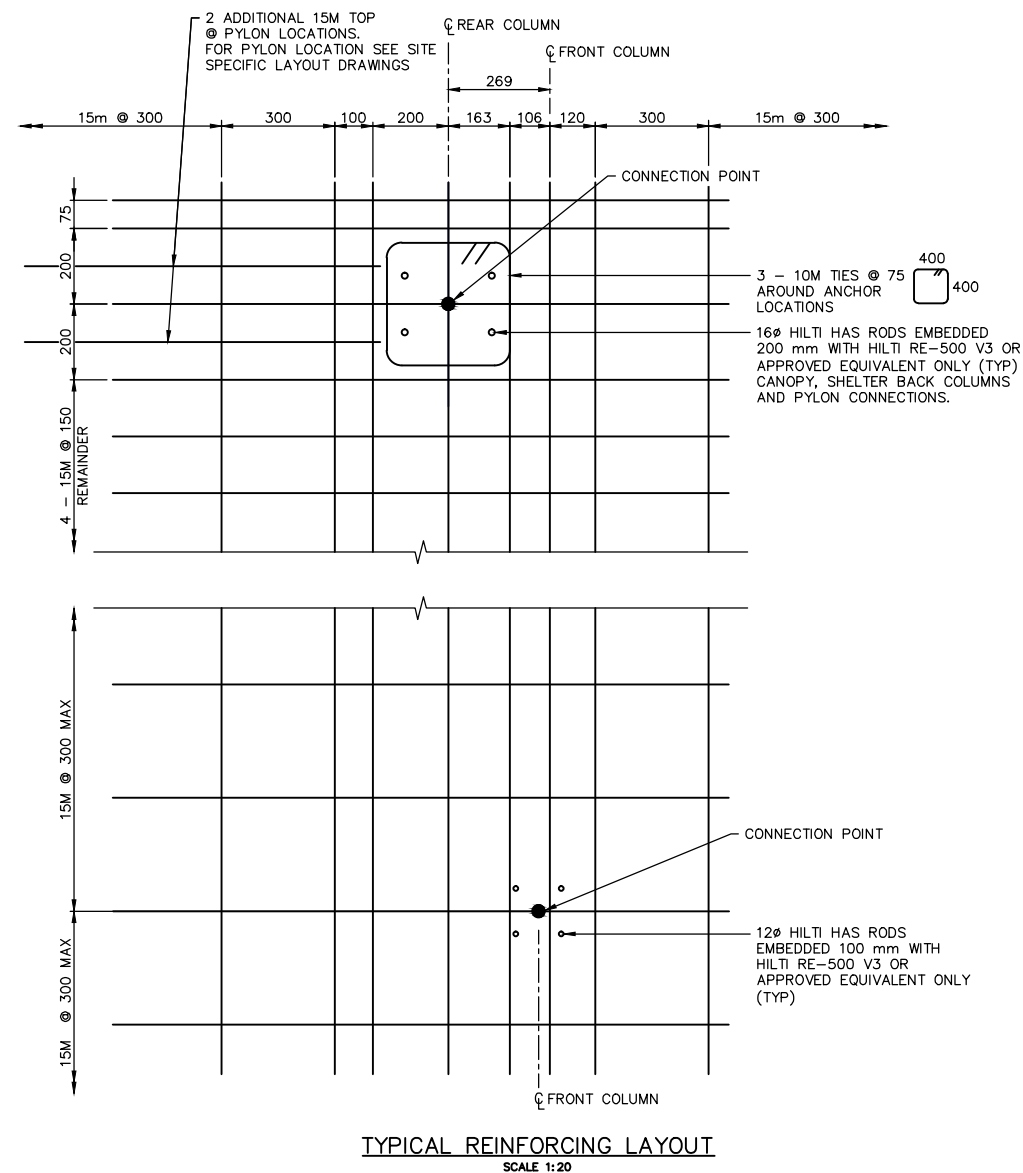
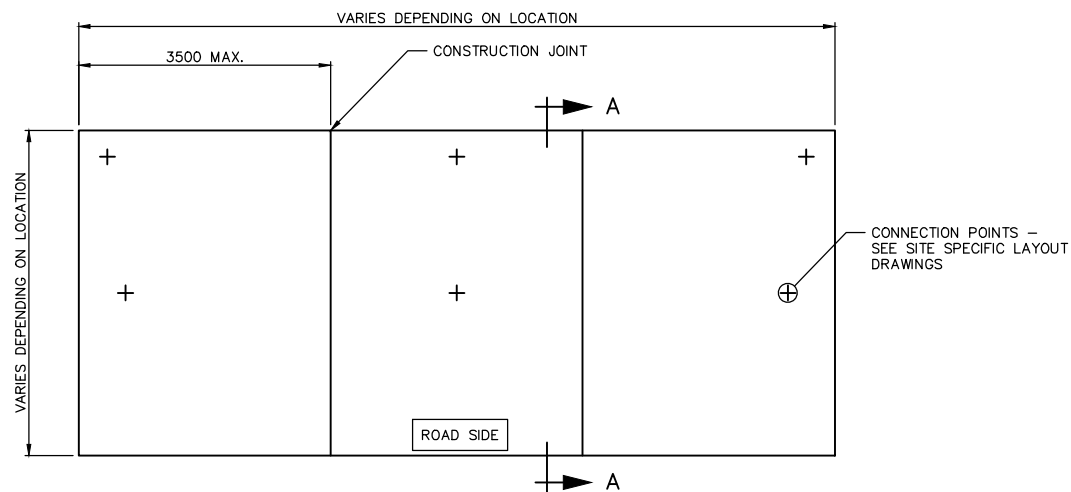
11				
10				
9				
8				
7				
6				
5				
4				
3				
2	RE-ISSUED FOR REVIEW	2020/03/25	IM	
1	ISSUED FOR REVIEW	2020/01/30	IM	
	PLAN DESCRIPTION/REVISION	DATE	BY	SEAL

CHECKED BY:	CHECKED BY:
DATE	DATE
DRAWN BY:	DATE



BUS RAPID TRANSIT PROJECT
DETAIL DESIGN
4TH AVENUE / 19TH STREET INTERSECTION
DETAILS
STANDARD PLATFORM GENERAL LAYOUT

CHIEF ENGINEER	
SCALES:	
HOR. AS SHOWN	DATE
VERT.	
SHEET NO.	PLAN NO.
	10069928-1274

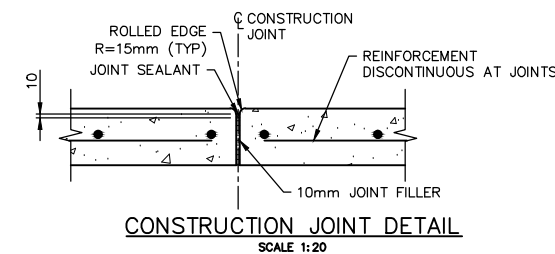


SECTION A-A

SCALE 1:20

SLAB GENERAL NOTES:

1. CONCRETE SHALL BE EXPOSURE CLASS C-1 IN ACCORDANCE WITH CSA STANDARD A23.1.
2. CONCRETE SHALL HAVE A MINIMUM 28-DAY COMPRESSIVE STRENGTH OF 30 MPa.
3. MINIMUM CONCRETE COVER SHALL BE 60mm UNLESS OTHERWISE NOTED.
4. REINFORCING STEEL SHALL BE IN ACCORDANCE WITH CSA STANDARD G30.18 GRADE 400W AND SHALL BE GALVANIZED IN ACCORDANCE WITH ASTM STANDARD A767.
5. SEE SPECIFICATIONS FOR ADDITIONAL MATERIAL AND FABRICATION REQUIREMENTS.
6. SEE SITE-SPECIFIC LAYOUT DRAWINGS, SHELTER AND CANOPY DETAILS FOR LOCATION OF FUTURE CONNECTION POINTS.
7. CONNECTION POINTS SHALL BE SURVEYED IN PLACE AND REINFORCEMENT ADJACENT TO CONNECTION POINTS SHALL BE CAREFULLY LOCATED RELATIVE TO THESE POINTS AND IN ACCORDANCE WITH THE DETAILS SHOWN.
8. PROVIDE A DIRECT MEANS OF VISUALLY LOCATING EACH CONNECTION POINT AFTER COMPLETION OF THE SLAB, THROUGH PROJECTING A NON-CORROSIVE MARKER THROUGH THE SURFACE AT EACH CONNECTION POINT OR BY ANOTHER APPROVED METHOD. SUBMIT DETAILS OF THE PROPOSED METHOD FOR REVIEW AT LEAST 5 WORKING DAYS PRIOR TO THE FIRST SLAB POUR.
9. LOCATE CONSTRUCTION JOINTS SYMMETRICALLY AND CENTERED BETWEEN SHELTER AND CANOPY SUPPORTS.



11				
10				
9				
8				
7				
6				
5				
4				
3				
2	RE-ISSUED FOR REVIEW	2020/03/25	IM	
1	ISSUED FOR REVIEW	2020/01/30	IM	
PLAN DESCRIPTION/REVISION	DATE	BY	SEAL	

CHECKED BY:	CHECKED BY:
DATE	DATE
DRAWN BY	DATE



BUS RAPID TRANSIT PROJECT	
DETAIL DESIGN	
4TH AVENUE / 19TH STREET INTERSECTION	
PLATFORM	
STRUCTURAL DETAILS	
CHIEF ENGINEER	
SCALES:	
HOR. AS SHOWN	DATE
VERT.	
SHEET NO.	PLAN NO.
	10069928-1275