

Annual Report 2010-2011
Celebrating the Meewasin Valley



Meewasin 



Chair, Jack Vicq



CEO, Susan Lamb

Our Mission Statement:

To ensure a healthy and vibrant river valley with a balance between human use and conservation, and to conserve the natural and heritage resources of the river valley.

Front Cover:

Composite photograph using photos from the Meewasin rink grand opening.

Other annual report photos courtesy of Meewasin employees:

Lennox Saunders
Jynell Cross
Brenda Kramarchuk
Nola Stein
Amanda Janzen
and Doug Porteous

Message from the Chair and CEO

Meewasin has completed 32 years of stewardship in the valley with successes in all areas of our mandate. Meewasin is unique in North America, a resource that is considered by the people of Saskatoon and area to be one of the single biggest contributors to our quality of life. We feel humbled by the responsibility.

We received excellent support for special projects from the public and private sector this year. With help from all orders of government, corporate and the general public we were successful this year in raising \$700,000 to build the new Cameco Meewasin Skating Rink at PotashCorp Plaza, including permanent washrooms and a trail connection from Spadina Crescent to the Meewasin Trail (to be completed this summer of 2011). We gained support for many other projects including refurbishment of the SaskEnergy Beaver Pond interpretive room at Beaver Creek Conservation Area, extending the Meewasin Trail, and adding an unprecedented 24 benches, and many bricks, trees, drinking fountains and other amenities to our river valley. We also recognized a one-time grant from the Ministry of Tourism, Parks, Culture and Sport to help expand the Meewasin Trail system in the northwest. This brings the provincial contribution to Meewasin for this fiscal year to \$1,207,697. It is significant that Meewasin programs this year had non-statutory revenue equal to 133% of statutory. In other words 57% of revenue came from non-statutory sources.

None of these projects would have been possible without support from you our community. Our fund development programs this year focused on the benefits of planned giving, especially asking donors to remember Meewasin in their will or name Meewasin in a life insurance policy. Corporate donors like Cameco, PotashCorp, Tim Horton's and Affinity Credit Union and individual private donations continued to be important and each in its way significant. We also took advantage of federal, provincial and municipal funding opportunities.

Other significant successes in 2010-2011 include:

- Began major work to complete the wetland area at River Landing 1 including the river garden water feature to be installed this summer.
- Worked on a trail in River Landing 2 including a connection from Avenue B back to the Farmers' Market area. Completion of the backshore work in this area awaits final installation of the sanitary sewer.
- Developed a new trail at the Water Treatment Plant. We plan some more backshore work this year but completion depends on improvements to the facility itself.
- Completed resource management work at Beaver Creek Conservation Area and the Northeast Swale. This latter work will be a focus of our resource management plans for 2011-2012. We coordinated an EcoBlitz with a variety of scientists and volunteers in the Northeast Swale to learn more about the significant ecological habitat.
- Drafted plans for a new SaskEnergy Beaver Pond room at Beaver Creek Conservation Area Interpretive Centre. We plan to complete this work this year including an innovative web cam that can focus in on areas of particular interest.
- Initiated plans for a new trail in the northwest to link Whiteswan Drive with Adilman Drive in 2011 and eventually to Wanuskewin Heritage Park.
- Partnered with six other Saskatchewan communities in delivering carboncreditcanada.ca, a voluntary carbon offset program.
- Worked with teachers and thousands of school children in the Saskatoon Public and Catholic School Divisions to learn about the important natural and human heritage stories of our community.
- Partnered with the Girl Guides of Canada to deliver Yellow Fish Road, a program about keeping the river clean.



Chair, Jack Vicq



Darwin Anderson



Mayor Don Atchison



Charlie Clark



Randy Fernets



Marion Ghiglione



Darren Hill



Peter MacKinnon



Brent Martian



Hon. Rob Norris*



Glen Penner



Colin Tennent



Gordon Wyant



CEO, Susan Lamb

Meewasin Board of Directors

* retiring board member

- Partnered with Affinity Credit Union, schools and several businesses to learn about litter and clean up our community in the spring.

If we have any concerns it is that basic statutory funding is increasingly insufficient to keep up with inflation and the exponential rise in construction costs. This is particularly apparent as we fall behind the rapid growth in Saskatoon and area. For example, we believe we need about \$12 million to keep up with trail development alone. Projects on hold include the capital costs of a new interpretive centre and continued improvements to Beaver Creek Conservation Area.

As a result, Meewasin has become more dependent on project funding and fundraising. We continue to explore a number of options with the board to determine a solution.

Thank you to our staff, our 12-member Meewasin board representing the City of Saskatoon, Government of Saskatchewan and University of Saskatchewan; our advisory committees: Education, Resource Conservation, Design, Development Review and Fund Development; and to our many donors, supporters and volunteers who have contributed time and resources to make Meewasin the successful conservation organization that it is.

Jack Vicq, Chair
Susan Lamb, CEO

Meewasin Committees

Public ownership in decision-making

Public Ownership in decision-making is one of Meewasin's five guiding principles. Meewasin committees are invaluable to the work of the Meewasin Valley Authority.

Development Review

The Development Review Committee is created under the Meewasin Valley Act to provide professional and unbiased recommendations regarding the acceptability of proposed improvements within the Meewasin Valley. Committee members were Glen Grismer, Moir Haug, Heney Klypak, Elisabeth Miller, Alan Otterbein, Rory Picklyk, Beatrice Regnier, Doug Tastad, Michael Velonas, Terry Werbovetski.

Resource Conservation Advisory

The Resource Conservation Advisory Committee advises the Meewasin board in its work to ensure the health of the Meewasin Valley and the conservation of its natural and cultural assets. Committee members were Darwin Anderson, Peter Goode, Margaret Hendry, Tammy Knutilla, Peggy Sarjeant, Janine Shadick, Gary Wobeser.

Design Advisory

The Design Advisory Committee assists the Meewasin board in its work to develop opportunities for human interaction with the natural and cultural heritage resources of the valley by providing sensitive built environments in the context of the natural valley environment. Committee members were Jyhling Lee, Brent Martian, Alan Otterbein, John Penner, Anna Ringston, Genevieve Russell, Ryan Walker.

Education Advisory

The Education Advisory Committee advises the Meewasin board on policy development in education. Committee members were: Brendan Bitz, Max Abraham, Cindy Coffin, Corinne Daelick, Melanie Elliott, Marion Ghiglione, Brenda Green, Roxane Melnyk, Lis Mack, Maurice Postnikoff.

Meewasin Jurisdiction

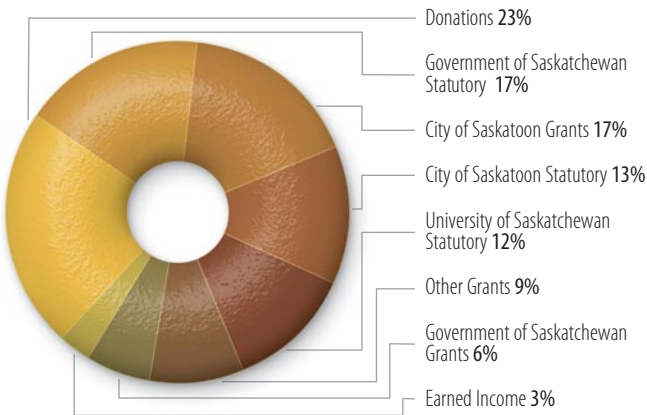
Meewasin centres in Saskatoon and runs approximately 60 km along the river through Saskatoon and Corman Park from Pike Lake in the southwest to Clark's Crossing in the northeast. It encompasses conservation areas, parks, museums, interpretive centres, the university lands, canoe launches, community links and over 60 km of Meewasin Trail. Including the South Saskatchewan River, there are over 40 square kilometres (25 square miles) in the conservation zone.

What Is Meewasin

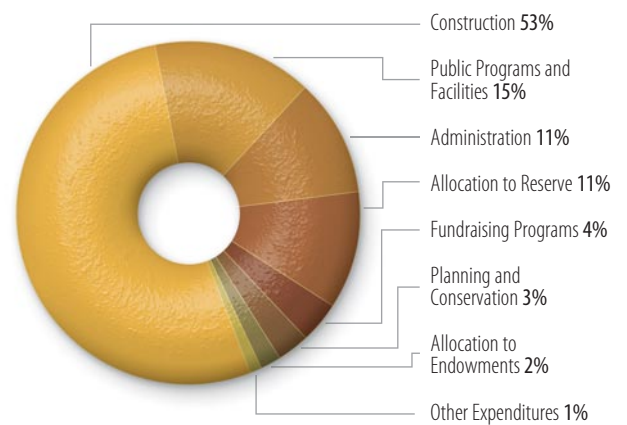
Created in 1979 by an Act of the Province of Saskatchewan, Meewasin is a conservation agency dedicated to conserving the cultural and natural resources of the South Saskatchewan River Valley. It is the means by which the three participating parties (the City of Saskatoon, the University of Saskatchewan and the Province of Saskatchewan) have chosen to manage the Meewasin Valley. The creation of Meewasin is based on the concept that the partners working together through a single agency – Meewasin – can accomplish more than they could individually.

Meewasin Financial Highlights as of March 31, 2011

Revenues (All Funds) \$5,154,675



Expenditures and Allocations (All Funds) \$5,154,675



The Meewasin Endowment Fund is managed by the Saskatoon Community Foundation and as of December 31, 2010 stands at \$406,798. Audited financial statements are available upon request..



Above: Chickadee, Beaver Creek Conservation Area, Spring 2010

Conservation Development and Education Initiatives

Each year Meewasin planning is guided by Raymond Moriyama's 100 Year Plan of 1979, the foundation document for the Meewasin Development Plan today. Meewasin initiatives strive toward the outcomes of *health, fit, balance and vibrancy*.

Resource Conservation

Planning

The Meewasin mandate is to ensure a healthy and vibrant river valley for now and future generations, with a balance between human use and conservation by

- providing leadership in the management of resources;

- promoting understanding, conservation and beneficial use of the valley;
- undertaking programs and projects in River Valley development and conservation.

Meewasin fulfills this mandate by undertaking development review, securing lands of interest and undertaking conservation, development and education initiatives.

Development Review

Meewasin is empowered by the MVA Act to coordinate or control the use of development, conservation, maintenance and improvement of land development, conservation, maintenance and improvement of land within the Conservation Zone. It is guided by a statutory committee of professional planners, architects, landscape architects, engineers and geological engineers. In the

2010/2011 fiscal year Meewasin reviewed 18 proposed improvements to the valley.

Meewasin Development Review is complementary to other environmental or heritage review permitting processes. It focuses on the following parameters:

- Conservation, preservation and interpretation of significant natural and heritage resources and other special characteristics of the site;
- Protection of slope stability and good drainage practices;
- Design of aesthetics complementary to the natural setting of the river valley;
- Provision for public access;
- Assurance of consistency with the Meewasin Development Plan.

Securing Lands of Interest

The original concept for Meewasin as set out in the 100 Year Plan was to create a continuous ribbon of green with the river as a spine. The 2009 State of the Valley Assessment highlighted the addition in the past five years of 9 km of publicly-accessible shoreline to the Meewasin Valley. As well, 561 acres of habitat land have been added, creating wildlife corridors, buffers for our source drinking water and improved opportunities to experience a natural setting.

Meewasin will continue to seek opportunities to secure long-term stewardship of land with conservation values. Stewardship may be secured through public ownership, conservation easements (legally-binding) or through voluntary easements (goodwill agreements).

Right: Securing Lands of Interest

The 22.8 acres of the Peggy McKercher Conservation Area (green area to the right) was purchased from the Episcopal Corporation of Saskatoon (Saskatoon Catholic Diocese) in 2007.

Yellow line: A new trail in the northwest to link Whiteswan Drive with Adilman Drive in 2011. This trail will eventually be linked to Wanuskewin Heritage Park. *Base map courtesy of Google Maps.*

Enhancing Biodiversity

Meewasin strives to protect and enhance biodiversity in the Meewasin Valley through grazing, prescribed controlled burns, removal of exotic species and noxious weeds, seed collection and planting of native grass and wildflowers, and clean-ups.

Many groups including the Saskatoon Nature Society and Ducks Unlimited assist with conservation work.



EcoAction Support for the Northeast Swale

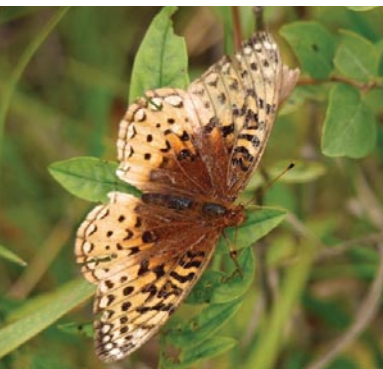
In 2009 the Environment Canada EcoAction program provided Meewasin with funds to improve the Northeast Swale over a two-year period. It is a relatively natural 225 hectare area, linked to the South Saskatchewan River valley, quickly being surrounded by urban development.

With the funds, Meewasin has undertaken a program of habitat improvement, including:

- a disturbance regime to favour native species and control shrub and exotic species encroachment into grasslands by grazing and controlled burns;
- removal of non-native species, seed and plant native selected species in damaged zones, and roadway right-of-way improvements to beneficial permanent cover, with help from volunteers;
- restoration of a wetland and improve its health assessment
- clean-up of illegal dumps;
- restriction of all-terrain and vehicle access;
- signs (including posting adjacent roadways as wildlife corridors) and wildlife-friendly fencing;

Below: Great Spangled Fritillary
— Summer 2010

Bottom: Valley Stewards
Planting Northeast (Crocus)
Prairie — Summer 2010



- implementation of an EcoBlitz to increase knowledge about the resource (includes volunteers); and
- communications strategy to enlist residents and contractors working on adjacent neighbourhood development in conservation.

Habitat lands are generally fragmented in the region. The target site is large and therefore it has been important to protect and improve habitat for many species, including Burrowing Owl, Common Nighthawk, Loggerhead Shrike, Short-eared Owl, Sprague's Pipit, Yellow Rail, and many others. The area is under threat from surrounding land-use change. The EcoAction investment has helped highlight the area for conservation and appreciation to prevent further ecological degradation.

Valley Stewardship

Volunteers come as part of a group with their own supervisor and work with our valley stewards. As part of the Meewasin commitment to promoting biodiversity within the Valley, several volunteer groups assisted us with planting, seed collection, and tree wrapping at such sites as Beaver Creek Conservation Area, Crocus Prairie, Cranberry Flats and Meewasin Park. These included Child and Youth Friendly, Eco-Camp for Kids, and students from E. D. Feehan and Roland Michener schools.

River Users Meetings

Nine different river user groups participated in this year's meeting to discuss various initiatives affecting the river and river access through the 2011 season. Topics covered included riverbank parks master planning, water intake and pipeline river crossing, south bridge crossing, riparian restoration work at Cosmopolitan Park and the Mendel/Shakespeare riverbank, boat launch update, calendar of events, and the river-flow forecast for the season. The calendar of events includes a heavier schedule of walks, runs, festivals, and other events than in any other year.

Design and Development

The focus of Design & Development this year was to design and build a new rink shelter, washrooms and accessible trail in Kiwanis Memorial Park, rebuild the water damaged basement beaver room at the Beaver Creek Conservation Area interpretive centre, restore the Water Treatment Plant riverbank and trail, improve the Thompson Belvedere lookout, extend the Northeast Trail at the Crocus Prairie, complete Riverfront I river garden and bioswale, Riverfront II site furnishings and connections to Avenue B and Spadina Crescent, and develop new Meewasin Trail branding and way-finding.

Cameco Meewasin Skating Rink at PotashCorp Plaza

The winter of 2010/11 proved to be a banner year for the Cameco Meewasin Skating Rink at PotashCorp Plaza with improvements to the skating site in Kiwanis Memorial Park including a new portable skaters' lodge, permanent

washrooms and an accessible trail connecting Spadina Crescent to the Meewasin Trail. Thank you to the Government of Canada, Government of Saskatchewan, City of Saskatoon, Cameco, PotashCorp, the Saskatoon Community Foundation, Kiwanis Club of Saskatoon, Dakota Dunes Community Development Corporation, Credit Union Centre, March Schaffel Architects, Jack and Sylvia Vicq, Kubota of Saskatoon, Meidl Honda, Delta Bessborough Hotel, and VCM Construction Limited who supported the \$1.5 million project. And thank you to Tim Horton's for its ongoing commitment to support the annual operational costs of the rink.

The Cameco Meewasin Skating Rink at PotashCorp Plaza officially opened its doors to the public on December 26, 2010 and closed on Monday March 14, 2011. We had busy season of 79 days with 20,562 users, an increase of more than 5,000 skaters from last year and 10,000 from two years ago. We lost five days due to extreme weather. Besides the regular users and community groups, we again recorded many users from out of province and country. On opening day, our first skaters included a woman from Holland.

Below top: Prime Minister Stephen Harper, left, and hockey legend Wayne Gretzky meet students at Meewasin outdoor skating rink in Saskatoon on February 5th, 2010.
Troy Fleece/The Canadian Press

Below bottom: Skating Party, Cameco Meewasin Skating Rink, PotashCorp Plaza, Winter 2011





Top: One of twelve tree grates produced by Laura Hale with input from Saskatoon students, River Landing, 2010

Middle: Purple Prairie Clover, Beaver Creek Conservation Area, Spring 2011

Bottom: Crocus Prairie Trail, Fall 2010

With the excitement of a new facility came more equipment, including a tractor, sweeper, snow blower and stereo sound system. The Credit Union Centre donated a hot-water flooder cart which enabled us to provide a much improved skating surface.

Thank you to all who donated skates and skaters helpers including the Kiwanis Club of Saskatoon and Viscount Central School.

Recycling the Meewasin Rink Shack to BCCA

Beaver Creek Conservation Area has much to offer in the way of increasing general understanding of our natural and cultural resources. Erratic water levels, inclement weather, highway construction and encroachment of civilization all seem to have had an impact.

The new SaskEnergy Beaver Pond interpretive display redevelopment in the basement of the BCCA interpretive centre will spark new interest in the site, as will recycling the old Meewasin Rink warm-up facility from Kiwanis Memorial Park to Beaver Creek Conservation Area.

The idea is to place the old Meewasin rink shack on the location of the once YWCA Camp Kesuk building site. It will be located as a three year pilot project immediately beside the present BCCA interpretive centre. It will be home for an interpretive cross-country ski program, an interpretive outdoor theatre program, and a home for the Meewasin interpretive canoe tours.

Tree Grate Event

Former Meewasin Artist in Residence, Laura Hale worked with over 125 high school art students from both the Saskatoon Public and Greater Saskatoon Catholic School Divisions to design and develop a unique form of functional public art through the medium of tree grates. Working within the theme of the river valley flora and fauna, each student created a design. Laura gathered the individual student art work combining the various elements to create a collectively designed tree grate for each class. A total of twelve tree grates were completed and installed at the River Landing backshore link. Participating high schools included Evan Hardy, Holy Cross, Aden Bowman, Bishop Murray and Saint Joseph.

Northeast Trail

Meewasin has had plans since 1996 to build an extensive trail loop in the northeast sector of Saskatoon. The 9.5 km loop would run from the Forestry Farm through the Saskatoon Natural Grasslands to the Crocus Prairie (at Peturrson's Ravine) south along the riverbank to Sutherland Beach and back to the Forestry Farm along Attridge Drive.

Meewasin has completed about 7 km of the total with the newest trail starting at the Crocus Prairie and going south. Staff worked very carefully to ensure that the trail had spectacular views of the river and yet did not disturb the surrounding prairie. Much of the trail was built of recycled crushed concrete. Access to this new trail is off Central Avenue just north of the Regional Psychiatric Centre.

Education

Meewasin offers a number of educational programs that focus on conservation of the heritage resources of the valley, facilitate the appropriate use and enjoyment of those resources and allow the public to experience and learn about them. These programs include stewardship and celebration, river festivals, in-services, Trail Ambassadors, interpretive canoe tours and partnering with other organizations that have similar goals. Meewasin accomplishes this through our two interpretive centres, the Meewasin Valley Centre and Beaver Creek Conservation Area, as well as through publications, audio-visual resources, a web site (www.meewasin.com), media commercials, public service announcements and appearances at special functions.

The Meewasin Valley Centre (MVC)

The Meewasin Valley Interpretive Centre focuses on the original areas of urban development in Saskatoon. It is a place to learn about the Meewasin Trail system, Saskatoon history, the South Saskatchewan River, and the future of the Meewasin Valley. In 2010-2011, the centre enjoyed a total of 18,149 visitors who toured the facility, sought information, or who participated in the

interpretive programs ranging from the annual Founder's Day celebrations in Friendship Park to the River Cinemas on the August and September long weekends.

The MVC was also responsible for the organization and delivery of the Annual Meewasin-Affinity Credit Union Clean-up Campaign 2010 which involved 27,342 participants, an increase of approximately 3,572 participants from the previous year.

The MVC staff supported other organizations throughout the city including the Heritage Festival of Saskatoon, the Marr Residence Management Team, the Saskatoon Heritage Society, Doors Open Saskatoon, the Saskatchewan Marathon and the Saskatoon CERT organization.

The MVC continued to provide interpretive programs to all Grade 3 students in Saskatoon, participated in by 2,334 students from the Saskatoon public, Catholic and



Top: Meewasin Valley Centre's Michael Bauche, Amanda Janzen & Cran in their Tim Horton's Jackets program the Meewasin Skating Rink at PotashCorp Plaza – Winter 2010



Middle: Affinity Credit Union Clean- Up Campaign Kick-off St Edwards School April 22, 2010

Bottom: Beaver Creek Conservation Area Stewardship.





their homes in these sheltered ponds. An interpretive centre and staff provide opportunities to discover nature during the four seasons along a selection of nature trails.

In 2010/2011, BCCA continued to provide interpretive programs to Grade 5 students from the Saskatoon schools totalling 2,769 students. 16,799 visitors sought information, explored the site on their own and/or participated in public programming that included Perseid Meteor Showers, Canada Day Heritage Hoopla, interpretive canoe tours, come-and-go discovery stations and self-guided trail activities. Visitation to the interpretive centre totalled 19,568 visitors.

SaskEnergy Beaver Pond

One of the displays at Beaver Creek Conservation Area is in the newly being refurbished SaskEnergy Beaver Pond room. Much of this work is on hold until the summer of 2011 when needed facility work will be complete. The more than \$100,000 project will house Chip's Corner with graphic illustrations of a beaver pelt, teeth, tail and contribution wall; a beaver lodge including a mural, food cache, mud pies, underwater plants, trees; a web of life illustration and an educational audio program. With thanks to the Government of Saskatchewan Community Initiatives Fund the staircase will be fitted with a stair climber for persons with accessibility needs. An interpretive visitor controlled camera will be installed above the interpretive centre able to rotate 360 degrees sending the images to a monitor in the BCCA lobby, to a recorder for delayed interpretive access to the web. Thank you to SaskEnergy and TD Friends of the Environment.

Monitoring Avian Productivity and Survivorship (MAPS)

For the past four summers, BCCA has participated in MAPS, a bird banding program developed by the Institute for Bird Populations in California. With the



Top: Beaver Creek Conservation Area — Spring 2011

Bottom: Beaver Dam
Beaver Creek — Summer 2010

regional school boards. 303 youth enrolled in the school break programs. The art gallery continued to host bi-monthly shows by local artists and photographers. The gift shop provided unique gift ideas for those who were looking for something naturally or culturally special. Including visitation to the centre of 18,149 and clean-up campaign registrants of 27,342, the Meewasin Valley Centre totalled 45,491 participants in its programs.

Beaver Creek Conservation Area (BCCA)

BCCA is located 13 km south of Saskatoon. It is a place where a prairie creek meets a prairie river. It is a microcosm of the Meewasin Valley and contains one of the few uncultivated short grass prairie sites in Saskatchewan. The beavers that live there play an important role in keeping the creek's habitats full of wildlife. Beavers build dams that flood water upstream, creating beaver ponds. Many plants and animals make

involvement of BCCA and other organizations, MAPS monitors land birds from across North America during the breeding season to better understand changes in the abundance, distribution and ecology of the bird population.

2010 marked the fourth MAPS season at Beaver Creek Conservation Area. Data collected from over 500 participating members throughout Canada, Mexico and the continental United States is used to understand trends in land-bird populations. Beaver Creek Conservation Area is one of three stations in Saskatchewan.

Recaptured birds from previous years are one of the highlights of bird banding. This year 5 birds were recaptured from 2007, 3 birds were recaptured from 2008, and 10 birds were recaptured from 2009. Returns of migratory birds this year included the Gray Catbird, Least Flycatcher, American Redstart, Spotted Towhee, Clay-coloured Sparrow, Red-eyed Vireo, Veery, and Yellow Warbler, as well as the non-migratory Black-capped Chickadee.

MAPS offers valuable educational and scientific contributions to conservation. Its success is based on the support of volunteers. The BCCA MAPS program is a group effort of Meewasin and its volunteers. Thank you to our volunteers for 2010 including Alison Beaudry, Melanie Elliott, Greg Fenty, Colin French, Nicole Lindgren, Jan Shadick, Stan Shadick, Bruce Boldt and Gwen Vanderkamp. Thank you to all for your support and enthusiasm.

Conservation Award

Sara Williams was the recipient of the Meewasin Conservation Award 2010 presented annually to an individual who has made an outstanding contribution to the heritage resources of the Meewasin Valley. Sara was born in Washington, D.C., and earned a degree in English and History at the University of Michigan. It was there that she heard John F. Kennedy's speech, "Ask not what your country can do for you - ask what you can do for your country." Before leaving to serve as a Peace Corps volunteer teacher in Tanzania in 1963, she heard

Martin Luther King's "I have a Dream" at the Lincoln Memorial. Both made lasting impressions. Since immigrating to Saskatoon in 1973, she has never wanted to leave. Earning her BSc and MSc in Agriculture with a major in Horticultural Extension, Sara was the Horticultural Specialist with the Extension Division of the University of Saskatchewan for many years. In that capacity and after her retirement she has given hundreds of workshops, written books, founded and chaired volunteer committees that have conserved and preserved the heritage resources of our Meewasin River Valley.

Looking back Sara says that she hopes she has been "influential in increasing public awareness of more sustainable perennial plants in prairie gardens as well as the value of water-conserving xeriscape landscapes, that through the influence of her and others, gardeners are able to see alternative tools to the use of broad-spectrum chemical pesticides and that the stories of our early plant breeders will not be lost."

Below: Cedar Waxwing being banded – June 2010



Right: Honourable Dustin Duncan & MP Lynne Yelich at Beaver Creek Conservation Area – October 2010



Below: Conservation Award Recipient 2010 Sara Williams, Meewasin CEO Susan Lamb & Meewasin Chair Jack Vicq



Below: Realty Executives Al Didur
Presenting Pelican Watch Award
A Mountain Bicycle to Shelby
Campbell, Realty Executives
Boardwalk at the Weir — June 2010



Pelican Watch

The first pelican to touch down between the CP Bridge and the weir did so on Friday, April 16, 2010, 5:32 pm as observed by our official spotters from the Saskatoon Nature Society. Meewasin received 2,850 entries with a guess of time and date as to the arrival of the official pelican. Grand Prize Winner of a Mountain Bike courtesy of Realty Executives Saskatoon was Shelby Campbell with a pelican arrival guess of 5:30 pm. Thank you to all who participated including the Saskatoon media, Realty Executives Saskatoon, Don's Photo Shop, the Pelican Market, the White Pelican Bed and Breakfast, Pelican Media, Houghton-Boston, the Meewasin Gift Shop, Homestead Ice Cream, the Wildlife Rehabilitation Society of Saskatchewan, the Saskatoon Nature Society, the Greater Saskatoon Catholic Schools, the Saskatoon Public Schools and all the participants.

Interpretive Canoe Tours

This year the Meewasin interpretive canoe tour program ran as scheduled from May 1 to August 27. The program

suffered from one of the rainiest years on record as well as related extreme changes in South Saskatchewan River water levels. However spirits were not dampened and the interpretive canoe tour program was booked to capacity. There were 83 charters, 41 of which were cancelled or postponed due to high waters and inclement weather. Of the 372 participants, 263 represented youth groups. Nonprofit user groups included City Park Collegiate, Silverspring School, Lester B. Pearson School, River Heights School, Calder Center, SRC, Doors Open Society, Ready Program, Autism Society, Zoo Camp, and the Ebenezer Baptist youth group.

Yellow Fish Road

Since 1991, thousands of Canadian youth have participated in the Yellow Fish Road program, learning about their water supply. Painting the storm sewers with yellow fish and distributing fish shaped yellow brochures is a reminder of the importance of clean water and proper disposal of hazardous waste. Meewasin, the Girl Guides of Canada (Saskatoon), Brightwater and Trout Unlimited

Below: A pelican makes a landing on the Saskatchewan River on its way to points further north.



Canada have partnered to support the program in Saskatoon and area since 1994. In 2009 the Girl Guides of Canada from the Saskatoon area handed out fish hangers and painted the storm sewers in Saskatoon's City Park community with yellow fish. This past fall of September 2010 the Girl Guides painted 65 storm drains in the Nutana community while handing out 397 door hangers.

This spring of 2011 the Girl Guides painted the storm sewers of Saskatoon's Lawson Heights and River Heights communities. Meewasin and Trout Unlimited Canada thank the Girl Guides of Saskatoon for their support of the program.

Partners FOR Sask River Basin (PFSRB)

Founded in 1993 by Meewasin, the national award winning PFSRB is a nonprofit organization managed by Meewasin with a mandate to increase understanding, awareness and stewardship of the Saskatchewan River Basin. The mission of PFSRB is to promote watershed sustainability through "awareness, linkages and stewardship" throughout the Saskatchewan River Basin.

Current initiatives include the following:

- Distribution of outdoor field day programs. *Click on Climate* teaches youth about the interactions between climate change and ecosystems. *Water Watchdog* teaches about water testing.
- In June 2009 PFSRB launched *From the Mountains to the Sea* – the State of the Saskatchewan River Basin Report. This is the first comprehensive examination of the entire basin as a whole. The report highlights the Saskatchewan River Basin, sub-basins in Winnipeg and key threats and vulnerabilities to the basin as a whole. Copies of the report can be found on line at www.saskriverbasin.ca
- Envirothon – PFSRB partnered with the Saskatchewan Forestry Association and Agriculture in the Classroom to help put on the Saskatchewan Envirothon. High schools from Saskatoon and area compete, testing their knowledge in forestry aquatics, wildlife, soils and a current environmental theme.



- Partnered with Agrium to deliver Agrium Caring for our Watersheds, a competition that asks students: "What can you do to improve your watershed?" Through a written proposal and then a final top ten presentation, students competed for \$6500 in cash prizes.
- The Mini Delta Symposium was held in The Pas, Manitoba in the fall of 2010. The symposium covered the current and historical research and knowledge about the delta. The conference was a follow-up to the Saskatchewan River Delta Symposium... Past, Present and Future (April 2008) and a basin-wide watershed leadership meeting (October 2009). Prior to the conference, individuals had the opportunity to tour Cumberland Lake and the Saskatchewan River Delta.

Summer Students

May through August, Meewasin had the support of 23 summer students, doubling the Meewasin work force. They worked in a variety of departments including construction, horticulture, conservation, stewardship, interpretive canoe tours, Partners FOR the Sask River Basin and Road Map Saskatoon. As well as bringing a youthful enthusiasm they were a talented group who brought new ideas knowledge and skills. Thank you to Young Canada Works, Canada Summer Jobs, SEIMA Green Team Student Employment and ASUPCA for supporting our summer student program



Top left: Painting the Storm Sewers with Yellow Fish

Top right: Meewasin Canoes at Beaver Creek Conservation Area

Bottom: Summer Students Gillian May & Alexander MacPherson Present to the Board – September 2010

Top: Retiring 500 Club Chair John Brockelbank presents former premier the late Allan Blakeney with a 500 Club award.

Middle: Honourable Dr. Gordon Barnhart, Lieutenant Governor of Saskatchewan, and 702 Royal Canadian Air Cadets (Lynx) Squadron Arlin Stadnyk and Hanne Stadnyk, Plant-A-Tree 2010

Bottom: Chimo Chordsmen Sing at Plant-A-Tree, Silverspring School 2010



Fund Development

Meewasin is a registered charity. Approximately 57% of its revenue for 2010/2011 came from non-statutory sources to support its conservation, development and education initiatives. Some reasons to support Meewasin include the following:

- If you wanted a pill to cure 70% of ills in today's society, it would be exercise in a clean nurturing environment;
- 91% of the general public support the work of Meewasin and want it to continue;
- For the local tax payer, Meewasin has done an excellent job in leveraging funds. The City of Saskatoon's annual statutory contribution to Meewasin represents only 16% of Meewasin total funding over 30 years. The remaining 84% of the money has come from provincial and university funding donations and special project grants;
- The Meewasin Valley Concept is known and studied around the world as a model of what a community can do to conserve a river valley for the purpose of public health and enjoyment;
- Meewasin has been recognized internationally on numerous occasions. In 2006, for the second time, Meewasin was one of the four finalists for the prestigious Thiess Riverprize awarded annually in Brisbane, Australia.

Greening the Valley Night

Meewasin's Fund Development Committee hosted a Greening the Valley Night at the Parktown Hotel Thursday, March 17, 2011. Participants came and enjoyed St. Patrick's Day. The ticket price included two books (Otter Tales of Saskatchewan and the newly published Wakonda Tales of Saskatchewan). All proceeds went to the Meewasin Endowment Fund.

Rotary International Peace Plaza

This past year Meewasin partnered with the Rotary Club of Saskatoon to bring greater public attention to the Rotary International Peace Plaza by recognizing in the bricks two Peace Prize recipients: Mother Teresa and Lester B. Pearson.

Plant-A-Tree Commemoration

Meewasin's 24th Dedication Ceremony was held Saturday, June 19th at Silverspring School. The venue was moved from Innovation Place due to the uncertainty of the weather. The late Ken Marland's "Songs of the Trees" CD provided a prelude. The Chimo Chordsmen performed. Guest speakers included Master of Ceremonies Julie Janzen, Honourable Dr. Gordon Barnhart, Lieutenant Governor of Saskatchewan, Professor Robert Calder representing donors, Marcia Jackson representing recipients and Meewasin Chair Jack Vicq.

The Plant-A-Tree, Memorial Forest, Buy-A-Bench, and Buy-A-Brick programs are four of several successful fundraising activities at Meewasin. Donations are made for a number of reasons including weddings, graduations, births, anniversaries, birthdays, and in memory of those who have touched our lives.

Since 1988 Meewasin has planted 3616 trees and shrubs in the valley that have been sponsored by individual donors and groups. Since 2000 there have been 140 donations to the Memorial Forest in Gabriel Dumont Park. The 2010 program included sponsorship recognition of 98 trees and shrubs, 16 Meewasin Trail benches, 13 bricks at the Rotary International Peace Plaza and 11 bricks at the Riverfront.

Wakonda Tales of Saskatchewan

With the success of Doug Porteous' first two books, *Gopher Tales of Saskatchewan* (2007, 2011) and *Otter Tales of Saskatchewan* (2010), as fund developers for Meewasin, Porteous recently published his 3rd book *Wakonda Tales of Saskatchewan* (2011). It is the culmination of the memories of Doug Porteous and contributing author Neil Garvie of YMCA Camp Wakonda, Wakaw Lake, Saskatchewan. In poetry, writing, photographs and illustrations, it documents the history of the camp, the experience of the camper and the coming of age of the camp staff. Porteous and Garvie's work is donated to Meewasin and the book is for sale exclusively in the Meewasin Gift Shop for \$9.95, as well as being distributed as a gift at many events along with a Meewasin donor card.

Carbon Offset Program

Meewasin is a member of the Association of Saskatchewan Urban Parks & Conservation Agencies (ASUPCA). In September of 2010, ASUPCA kicked off a voluntary carbon offset program for the purpose of raising revenue to reforest its natural areas. The seven ASUPCA members make up more than 60% of the population of the province and have three things in common including a water body, an independent board and a locally developed master plan. They are a model of what communities can do to conserve their natural areas for now and future generations.

An individual or an organization's carbon footprint from an activity can be measured by undertaking a greenhouse gas emissions assessment. Once the size of the carbon footprint is known, a strategy can be developed to reduce it. For more information go to carboncreditcanada.ca.

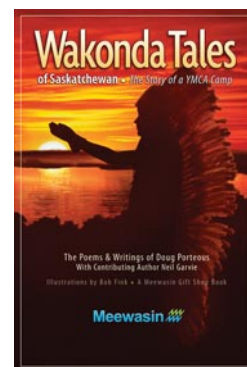
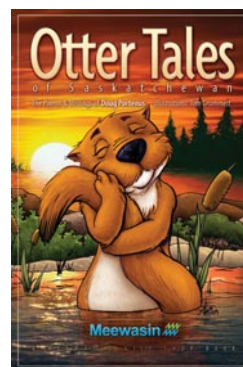
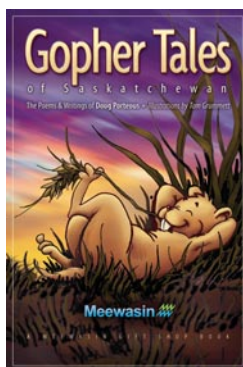
Right middle: Honourable Bill Hutchinson, Dick DeRyk of Common Sense Solutions & St. Edwards School Eco-Justice Students Launch ASUPCA's Carboncreditcanada.ca – September 2010

Right bottom: "Gopher Tales", November 2007; "Otter Tales", March 2010; "Wakonda Tales", 2011



Left: Thank you to Doug and Lynne Davies of Homestead Ice Cream, one of Meewasin's many donors.

Below: Association of Saskatchewan Urban Parks & Conservation Agencies logo



A special thank you to our many sponsors, donors and supporters

2010/2011 Meewasin Donors (over \$1000)

623183 Saskatchewan Ltd. & Willowridge Developments Ltd.
Affinity Credit Union
Alliance Energy
Darwin Anderson
Aveva Resources Canada Ltd.
G.N. & Janice Arnott
Arthur & Constance Balon
Andrew P. Belyk
Estate of Marjorie L. Benson
Moiria Birney
Ronald & Muriel Bremner
Jack & Sylvia Vicq
Edwards School of Business
John & Ina Brockelbank
Butler Byers Insurance Ltd.
Wayne & Ina Brownlee
Cameco Corporation
Wendy & Alex Campbell
Canadian Forestry Association
Court Carruthers
Catterall & Wright
Gwen & Guy Charman
CIBC Western Region
Pauline Melis & Eric Cline
Ann & Ewen Coxworth
Creative Fire
Crosby Hanna & Associates
Yvonne Cuttle
Dakota Dunes Community Development Corp.
Ducks Unlimited Canada
Raymond & Helen Fast
Mark Folstad
David E. Gauley
Henrietta Goplen
Gerald W. & Bettina Grandey
Susan Green
H. Liz James & Gary Groot
Marlene Joan Hall
Robert & Barbara Halliday
Halsbury Partnership
David Hastings

Lucille Henderson
Joan R. Holdstock
Dr. Louis & Ruth Horlick
Marcia E. & Robert D. Jackson
Alexis & Douglas Jamieson
Julie Janzen
Susanne Yip & Ivan Jen
Neva Keith
Christopher Kent
Deleyne Kerfoot
Giselle Knogler
Elaine Konkin
Jean Kristjanson
Anita & Graham Langford
Terri Lemke
Stephen E. Levy
R. Peter & Janice MacKinnon
Dave E. Mallough
Rita & Robert Mirwald
Moore Financial Services Corp.
Jacqueline Mowchenko
Richard & Glenda Nieman
Laurence Osachoff
Our Lady of the Prairies Foundation
Susan Penley
Glen & Wilma Penner
Bill Peterson
Petro Canada
PIC Investment Group Inc.
Darlene Bessey & Ken Pontikes
Doug & Anne-Marie Porteous
Janet & Art Postle
PotashCorp
RBC Foundation
Realty Executives Saskatoon
Joseph A. Remai
Robb Kullman Engineering
Saskatchewan Watershed Authority
The Saskatoon Community Foundation
Saskatoon Nature Society
Saskatoon Road Runners Association
SaskEnergy
SaskPower Corporation
SaskTel

Estate of John Scharf
Marguerite D. Scott
Shell Canada Ltd.
Donald G. Somers
TCU Financial Group
TD Bank Financial Group
The EJLB Foundation
Tim Hortons
Marilyn & Edward Underhill
United Way Community Funds of Saskatoon
University of Saskatchewan
VCM Construction Ltd.
Spencer and Jan Early
WeldFab Ltd.
West Wind Aviation
Elaine & Peter Zakreski

Meewasin Sponsors

Acklands Grainger
The Rent It Store
Downey's Bakery
Innovation Place
MNP LLP
Van Houtte Coffee Services
Saskatchewan Marathon

In-Kind Donations

Dr. W. Jean Fewster
Homestead Ice Cream
Houghton Boston
Saskatoon Sun Newspaper
Tramp's Music & Books Inc.

Grants

ASUPCA
Canadian Museums Association
Canada Western Economic Diversification
City of Saskatoon
Conseil de la Cooperation de la Sask
Environment Canada EcoAction
Heritage Canada Foundation
Province of Saskatchewan
Saskatchewan Heritage Foundation

Saskatchewan Lotteries
Sask Ministry of Municipal Affairs
Sask Power Corporation
Service Canada
Trans Canada Trail Association
Tree Canada Foundation

Service Clubs

Kinsmen Club of Saskatoon
Saskatoon Kiwanis Club Foundation
Kiwanis Club of Saskatoon
Rotary Club of Saskatoon
Rotary Club of Saskatoon Meewasin
Rotary Club of Saskatoon Nutana
Rotary Club of Saskatoon North
Rotary Club of Saskatoon Riverside
Bridge City Cosmopolitan Club
Saskatoon Cosmopolitan Club
Saskatoon Cosmopolitan
Couples Club

Media

Rock 102 FM
News Talk Radio 650 CKOM
C95 FM
The Bull 92.9
CJWW 600
Magic 98.3
Global Saskatoon
CTV Saskatoon
SHAW TV Saskatoon
CBC
CFRC
The Star Phoenix
The Saskatoon Sun

Meewasin Funding Committees

Fund Development

Chair Don Somers
Lise deMoissac
Wayne Dyck
Robin Chapman
Marion Ghiglione

Brian Main
Patricia Roe
Maurice Postnikoff
Tom Symenuk
Betty-Anne Stevenson
Celeen Vizer
Doug Porteous

Planned Giving Committee

Chair Tom Symenuk
Rich Chapman
Shawn Windrem
Orrin Ritter
Terry McBride
Celeen Vizer
Gwen Charman

Plant-A-Tree Committee

Chair Wayne Dyck
Laurence Osachoff
Robert White
Fred Amaya
Celeen Vizer
Doug Porteous

Direct Mailer

Maurice Postnikoff
Wayne Salloum
Celeen Vizer
Doug Porteous

Meewasin Foundation Inc.

Lise deMoissac
Claire Bullaro
Patricia Roe
Celeen Vizer

Meewasin Valley Authority, 402 Third Avenue South, Saskatoon, Saskatchewan S7K 3G5 Phone: (306) 665-6887 Email: meewasin@meewasin.com Web: www.meewasin.com

