



# Downtown Trail and Site Enhancements

---

(River Landing to South end of Shakespeare Site)

## Project Overview

The project involves trail and site enhancements from River Landing to the south end of the Shakespeare site, through the City's downtown. The work includes enhancements to 1.5 km of existing primary Meewasin Trail and adjacent areas through Friendship Park, Kiwanis Memorial Park and the connection under the University Bridge.









# DOWNTOWN TRAIL ENHANCEMENTS: Kiwanis Park South

LEGEND

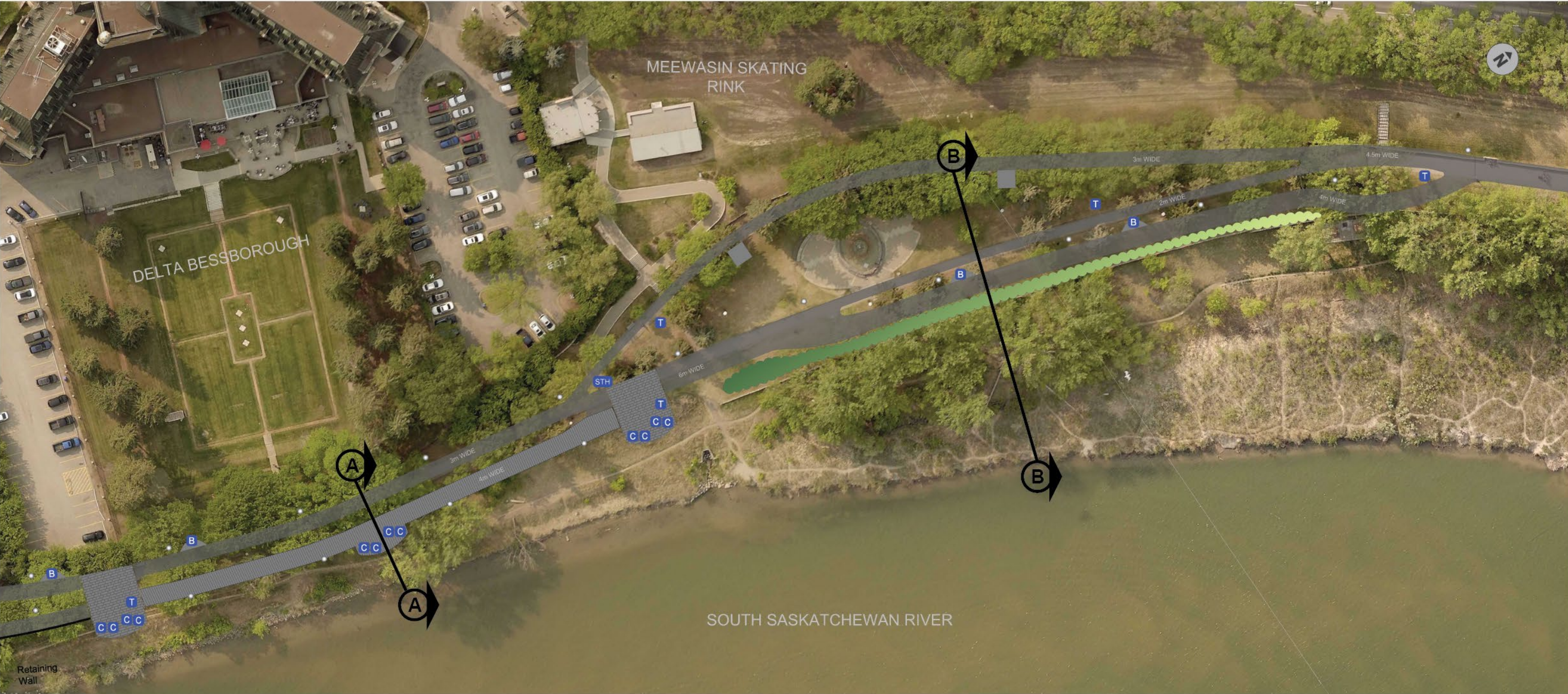
- PROPOSED**
- TREES
  - SHRUBS
  - ASPHALT PATHWAY
  - PAVERS
  - CONCRETE
  - BRIDGE / BOARDWALK
  - RAMP AND LANDINGS
  - RIPRAP
  - MATCH LINE
  - LIGHTS
  - CONCRETE SEAT WALL
  - GRASS BLOCK PAVERS
  - CRUSHER DUST
  - BOLLARD
- BENCH
  - CHAIR
  - PRIMARY TRAILHEAD SIGN
  - SECONDARY TRAILHEAD SIGN
  - TRAIL COUNTER
  - TRASH RECEPTACLES
  - 0 KM MARKER
  - 1/2 KM MARKER
  - 1 KM MARKER
  - WATER FOUNTAIN
  - PICNIC TABLE
  - MEEWASIN PROJECT OUTLINE
  - COS BRT PLANNING OUTLINE
  - COS PERMANENT FESTIVAL SITE PLANNING OUTLINE

- EXISTING**
- TREES
  - SHRUBS
  - PATHWAY TO BE REPLACED
  - BENCH
  - TRASH RECEPTACLES
  - INTERPRETIVE SIGN
  - PRIMARY TRAILHEAD SIGN
  - SECONDARY TRAILHEAD SIGN
  - WASHROOM
  - PICNIC TABLE
  - EXISTING TO BE REMOVED

NOTES

**TRAIL DISTANCE**  
Trail Distance = 288 m  
**VEGETATION**  
New Planting Area = 1609 sq. m





# DOWNTOWN TRAIL ENHANCEMENTS: Kiwanis Park Central

LEGEND

PROPOSED		EXISTING	
	TREES		TREES
	SHRUBS		SHRUBS
	ASPHALT PATHWAY		PATHWAY TO BE REPLACED
	PAVERS		BENCH
	CONCRETE		CHAIR
	BRIDGE / BOARDWALK		PRIMARY TRAILHEAD SIGN
	RAMP AND LANDINGS		SECONDARY TRAILHEAD SIGN
	RIPRAP		TRAIL COUNTER
	MATCH LINE		TRASH RECEPTACLES
	LIGHTS		INTERPRETIVE SIGN
	CONCRETE SEAT WALL		PRIMARY TRAILHEAD SIGN
	GRASS BLOCK PAVERS		SECONDARY TRAILHEAD SIGN
	CRUSHER DUST		WASHROOM
	BOLLARD		PICNIC TABLE
			EXISTING TO BE REMOVED

NOTES

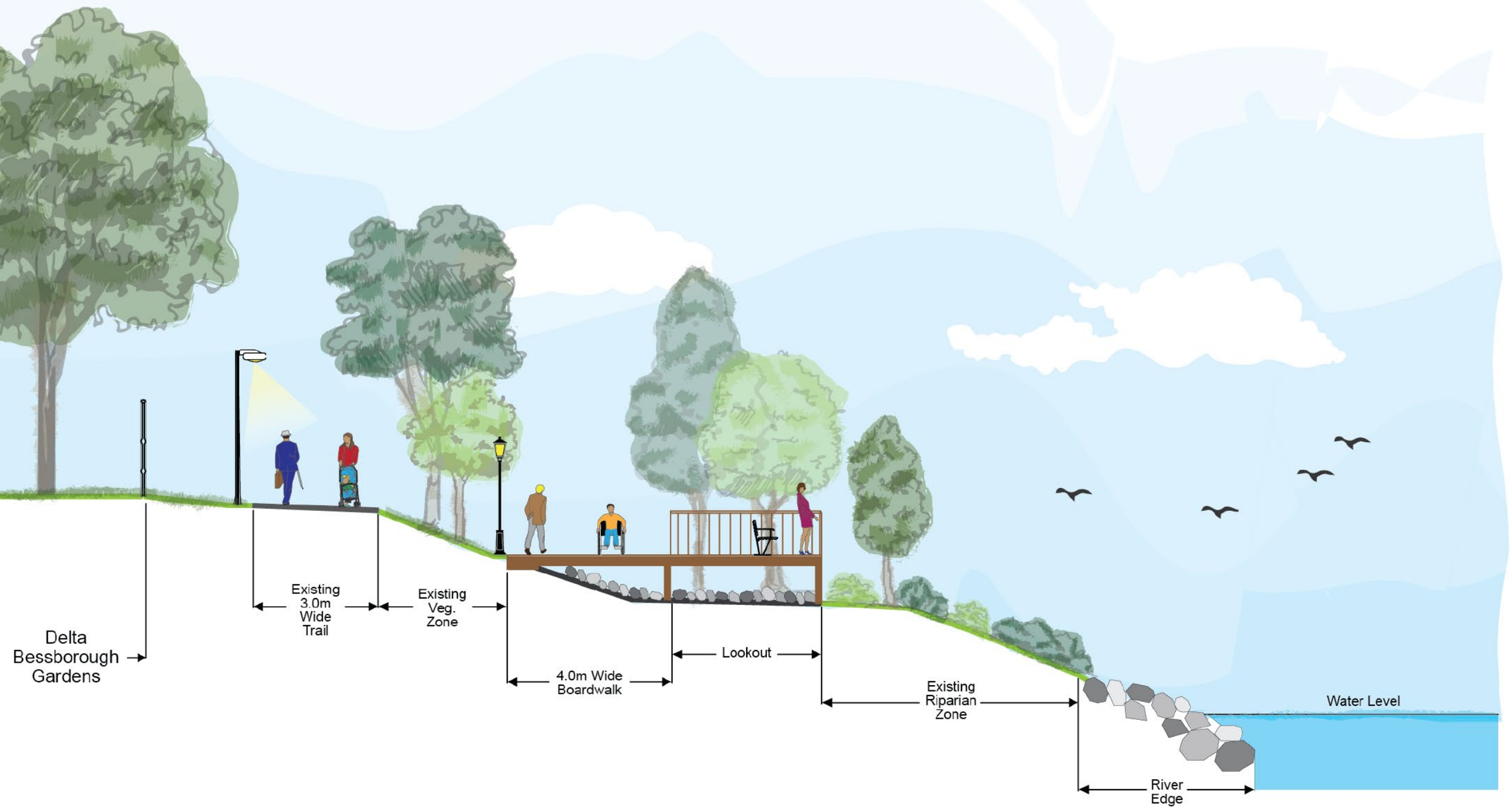
TRAIL DISTANCE
Trail Distance = 323 m
VEGETATION
New Planting Area = 353 sq.m





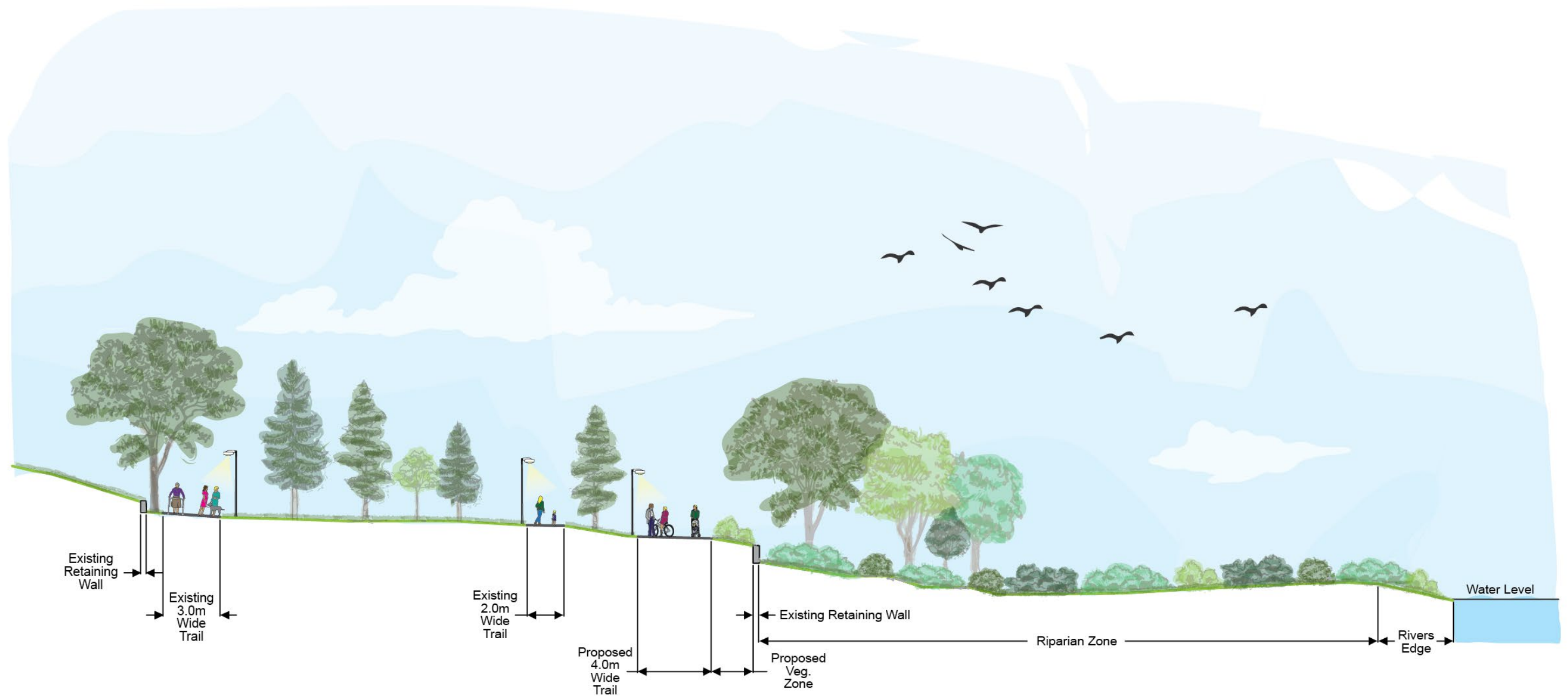
**DOWNTOWN TRAIL AND SITE ENHANCEMENTS: Kiwanis Park Central Conceptual Illustration**

## DOWNTOWN TRAIL ENHANCEMENTS: Kiwanis Park Central A-A





# DOWNTOWN TRAIL ENHANCEMENTS: Kiwanis Park Central B-B







# DOWNTOWN TRAIL ENHANCEMENTS: Kiwanis Park North

LEGEND

- PROPOSED**
- TREES
  - SHRUBS
  - ASPHALT PATHWAY
  - PAVERS
  - CONCRETE
  - BRIDGE / BOARDWALK
  - RAMP AND LANDINGS
  - RIPRAP
  - MATCH LINE
  - LIGHTS
  - CONCRETE SEAT WALL
  - GRASS BLOCK PAVERS
  - CRUSHER DUST
  - BOLLARD
- BENCH
  - CHAIR
  - PRIMARY TRAILHEAD SIGN
  - SECONDARY TRAILHEAD SIGN
  - TRAIL COUNTER
  - TRASH RECEPTACLES
  - 0 KM MARKER
  - 1/2 KM MARKER
  - 1 KM MARKER
  - WATER FOUNTAIN
  - PICNIC TABLE

- EXISTING**
- TREES
  - SHRUBS
  - PATHWAY TO BE REPLACED
  - BENCH
  - TRASH RECEPTACLES
  - INTERPRETIVE SIGN
  - PRIMARY TRAILHEAD SIGN
  - SECONDARY TRAILHEAD SIGN
  - WASHROOM
  - PICNIC TABLE
  - EXISTING TO BE REMOVED

NOTES

**TRAIL DISTANCE**  
Trail Distance = 296 m

**VEGETATION**  
New Planting Area = 305 sq.m

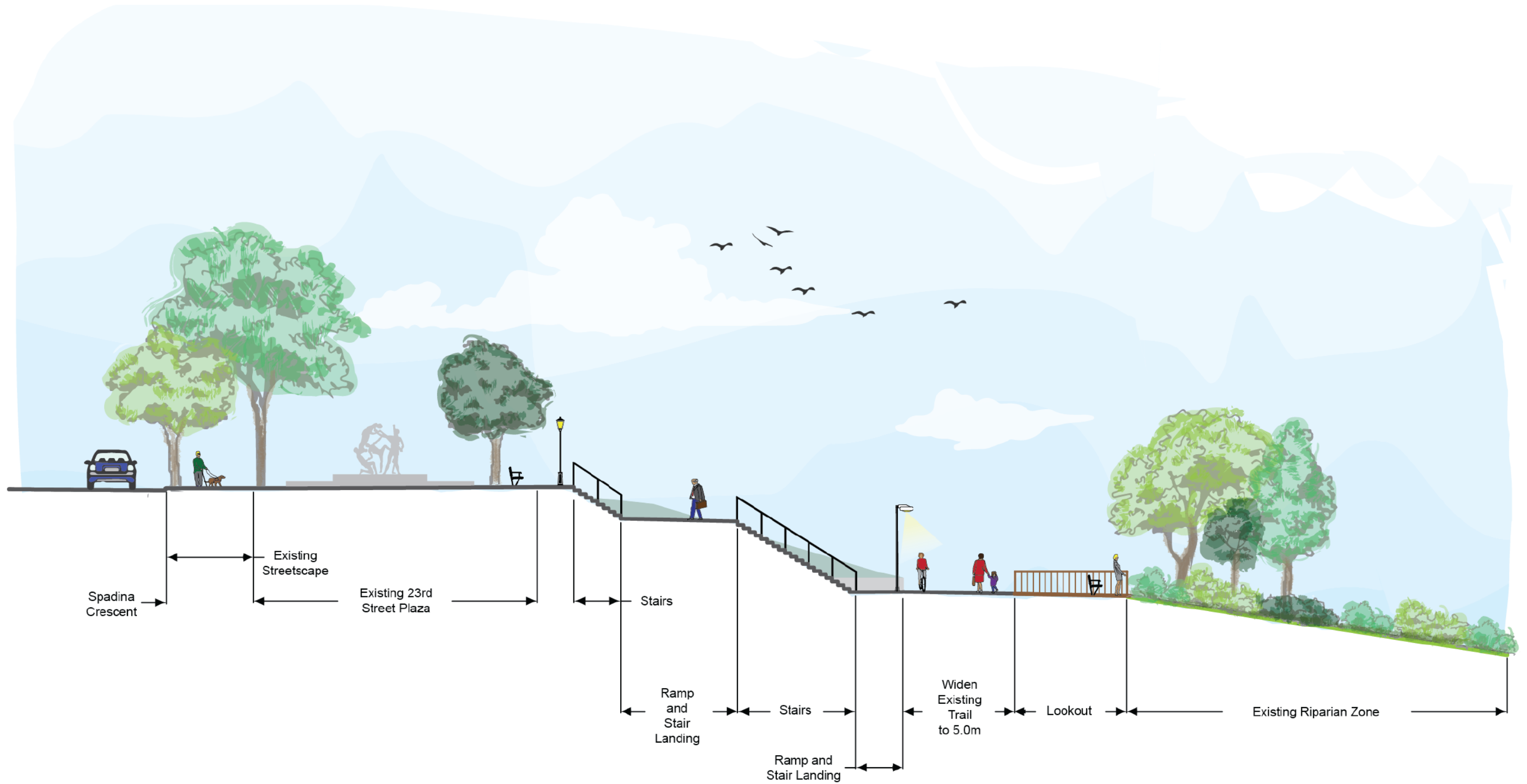




***DOWNTOWN TRAIL AND SITE ENHANCEMENTS: Kiwanis Park North Conceptual Illustration***



# DOWNTOWN TRAIL ENHANCEMENTS: Kiwanis Park North C-C







# DOWNTOWN TRAIL ENHANCEMENTS: Spadina Crescent

LEGEND

PROPOSED		EXISTING	
	TREES		TREES
	SHRUBS		SHRUBS
	ASPHALT PATHWAY		PATHWAY TO BE REPLACED
	PAVERS		BENCH
	CONCRETE		TRASH RECEPTACLES
	BRIDGE / BOARDWALK		INTERPRETIVE SIGN
	RAMP AND LANDINGS		PRIMARY TRAILHEAD SIGN
	RIPRAP		SECONDARY TRAILHEAD SIGN
	MATCH LINE		WASHROOM
	LIGHTS		PICNIC TABLE
	CONCRETE SEAT WALL		EXISTING TO BE REMOVED
	GRASS BLOCK PAVERS		
	CRUSHER DUST		
	BOLLARD		

NOTES

TRAIL DISTANCE
Trail Distance = 365 m
VEGETATION
New Planting Area = 424 sq.m



# Frequently Asked Questions

**Why are enhancements being undertaken here?** Through a Trail Study (infrastructure review) completed in 2014, the Meewasin Trail in this area was identified as a high priority for upgrades within the overall Meewasin Trail system. This area has some of the oldest sections of trail with some of the highest user volumes, is narrow in some areas, has blind corners and other safety concerns, and some sections do not meet accessibility standards. The existing trail and amenities are also dated and in need of upgrades.

**What is the goal of the project?** The goal is to enhance the trail network, including widening, to improve user experience and access, accommodate user volumes, and mitigate safety risks while enhancing natural features as much as possible. Given the significant visibility, usage and programming through this area including the planned festival site improvements, many new feature nodes and amenities are incorporated to provide a high level of programming potential and unique user experiences.

**How will the goal be accomplished?** Given the complexity and variety of proposed developments, this is broken down into unique sections as follows:

## All Areas:

- Upgraded trail lighting,
- Upgraded site amenities including benches, chairs, signage and trash units,
- Retention of existing vegetation unless noted,
- Replacement of existing asphalt trail and widening as noted in each area.

## Friendship Park Riverfront:

- Alterations as part of the Permanent Festival Site Plan by the City of Saskatoon, including the realignment of Spadina Crescent (refer to their project for more details)
- New plaza space SE of the intersection of Spadina and 3<sup>rd</sup>,
- Lookouts on the river providing views and seating opportunities,
- Curved concrete seat walls along the face of the slope in lawn areas to provide informal seating,
- Plantings of vegetation including park shade trees and riparian areas,
- Vegetation removals to accommodate road and trail reconfiguration.

## Broadway Bridge (under):

- Programming / plaza space underneath the Broadway Bridge with public art potential, and enhanced / feature lighting.



### **Kiwanis Memorial Park South:**

- Alterations as part of the Permanent Festival Site Plan by the City of Saskatoon, including upgrades to the existing temporary boat launch area (refer to their project for more details),
- Existing asphalt trail widened to 6.0m (south), or split with two 3.0m wide sections (north),
- Plantings of vegetation in riparian areas,
- Upgraded drinking fountain.

### **Kiwanis Memorial Park Central (at Bessborough Gardens):**

- Upgraded asphalt trail on current alignment,
- Two lookouts on the river for views and seating opportunities,
- Boardwalk between the two lookouts with one central boardwalk lookout. Existing trees prevent widening of the existing trail in this zone, so the boardwalk addresses this while providing a unique amenity. All existing trees will be retained, some shrubby vegetation will be removed (primarily non-native/invasive material),
- Enhanced / feature lighting at the boardwalk and three lookouts.

### **Kiwanis Memorial Park North Central (water fountain area):**

- Upgraded asphalt trail on current alignment, 6.0 m wide and then split,
- Split Trail adjacent to the water fountain with a 4.0m wide lower trail. Existing trees prevent widening of the existing trail in this zone, so the trail is split,
- Planting of low vegetation,
- Removal of existing stairs and lower picnic area (picnic areas relocated to be adjacent to the fountain).

### **Kiwanis Memorial Park North:**

- Upgraded asphalt trail on current alignment (widened up to 6.0m where possible),
- New seating nodes set back further into the slope with new retaining wall at seating nodes.

### **23 Street Connection:**

- Stairs and ramps with handrails to provide a connection between 23 Street and the primary Meewasin Trail,
- Enhanced / feature lighting,
- Additional plaza paving around the existing sculpture (Tribute to Youth) area,
- Plantings of low vegetation,
- A lookout on the river for views and seating opportunities.

### **Thompson Belvedere:**

- New 4.0m wide bridge (to replace the existing 2.0 m wide bridge),



- New 4.0m wide asphalt trail connections on both sides of the bridge that are at a maximum 5% slope,
- New trail connections to the Thompson Belvedere,
- New lookout north of the Belvedere to replace the existing lookout,
- Enhanced / feature lighting,
- Plantings of low vegetation,
- New drinking fountain,
- Removal of some rock walls to accommodate trail and bridge work,
- Removal of some shrub material to accommodate trail and bridge work.

#### Trail connection north to Shakespeare site:

- Upgraded asphalt trail, widened where possible,
- Plantings of low vegetation,
- Shoreline armoring north of the University Bridge,
- Enhancements under the University Bridge with potential public art and enhanced / feature lighting.

**What will the completed trail look like?** Similar to upgrades completed in previous years, the proposed trail will be:

- Built to current accessibility standards,
- Built to City of Saskatoon construction standards,
- Wider to accommodate user volumes and improve safety,
- Fully lit,
- Incorporate updated amenities such as lighting, benches, chairs, picnic areas, signage, drinking fountains and trash receptacles,
- Provide direct access to several new seating / view nodes and plaza spaces,
- Some sections will incorporate pavers and concrete surfaces, and one section of boardwalk is planned.

**How will existing vegetation on site be impacted?** Overall, the project will result in a net gain in vegetated areas of 3 times what is planned for removal. Removals are limited primarily to Friendship Park and some vegetation around the Thompson Belvedere. Trail alignments and widening through the remainder of the site has been developed to minimize the impact on trees.

**What plans are in place for new plantings?** New planting areas will provide an overall increase in vegetated area. New planting areas will provide the opportunity to:

- **Increase biodiversity.** Replanting will be a mixture of native shrub and tree species and ornamental species where appropriate.
- **Plant edible berries and native plants** with indigenous cultural significance.
- **Improve the habitat** and integrity of the existing vegetated zone between the trail and the river by planting open areas, while maintaining river views.



**What impacts will there be on other park amenities?** Adjacent amenities will not be impacted. This includes features including the Vimy Memorial, Gabriel Dumont statue, Thompson Belvedere building, Bessborough Gardens, and the water fountain. The project has been planned with a goal to minimize impacts on existing mature trees.

**What impacts do other projects have on the Downtown Trail Enhancements?**

- The planned Trail Enhancements run through the City of Saskatoon's planned Permanent Festival Site in Friendship Park and Kiwanis Park South . We continue to coordinate with the Festival Site team to ensure the program needs for both projects are recognized and coordinated to maximize the overall benefit.  
[https://www.saskatoon.ca/sites/default/files/documents/community-services/recreation-sport/open-space/200157\\_pofs\\_report\\_cw\\_appendices\\_21\\_feb\\_01\\_r.pdf](https://www.saskatoon.ca/sites/default/files/documents/community-services/recreation-sport/open-space/200157_pofs_report_cw_appendices_21_feb_01_r.pdf)
- The Kinsmen Park Parking Strategy and Transportation Study [https://www.saskatoon.ca/sites/default/files/documents/city\\_of\\_saskatoon\\_-\\_kinsmen\\_park\\_parking\\_strategy.pdf](https://www.saskatoon.ca/sites/default/files/documents/city_of_saskatoon_-_kinsmen_park_parking_strategy.pdf), completed in 2019, includes some long term proposed changes to the road and active transportation network north of the University Bridge. The proposed changes resulting from this plan will have little to no impact on the planned trail enhancements.

**Will the existing interpretive signs be removed?** These will be removed during construction. Meewasin is planning a valley wide review of all interpretive signs. New signs for this area will be planned and developed as part of that process, independently of this project.

**When will this work be done?** Construction is currently unfunded. This project is part of an upcoming capital campaign and will proceed as funding becomes available. Given the complexity of this project it is anticipated that it will be completed in phases.

**Will the trail or any part of the site be closed?** Closures and detours will be necessary to allow construction to proceed while maintaining public and contractor safety. Trail users will be directed to detour around the work zone, utilizing adjacent trails and sidewalks. Trail users are asked to respect the construction activity and use designated detours outside of the work zone.

**Are there future plans for other trail enhancements?** Projects currently being planned include the development of gaps in the network in the Holiday Park area (with the closure of Spadina Crescent), and the development of gaps in the network in the River Heights area (in Meewasin Park). New trail is also being planned for the northeast sector, from the Circle Drive North Bridge to the Chief Mistawasis Bridge.



## About the Meewasin Valley Authority

*The Meewasin Valley Authority exists to ensure a healthy and vibrant river valley, with a balance between human use and conservation by:*

- *Providing leadership in the management of its resources;*
- *Promoting understanding, conservation and beneficial use of the Valley; and*
- *Undertaking programs and projects in river valley development and conservation, for the benefit of present and future generations.*

*There are 67 square kilometers of land and over 90km of established trail, which has seen up to 1.65 million trail visits per year, in the Meewasin Valley. The area also features sites that help people to connect to nature through experiences such as Beaver Creek Conservation Area, the Meewasin Northeast Swale, Saskatoon Natural Grasslands, the River Landing Spray Area, and the Cameco Meewasin Skating Rink @Nutrien Plaza. Meewasin is a non-profit organization that relies on donations and volunteers for sustainability. To get involved or learn more visit [www.meewasin.com](http://www.meewasin.com)*